

RNAV (GPS) PRM Y RWY 10 (SIMULTANEOUS CLOSE PARALLEL) HARTSFIELD/JACKSON ATLANTA INTL (ATL)

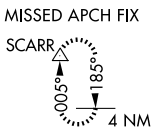
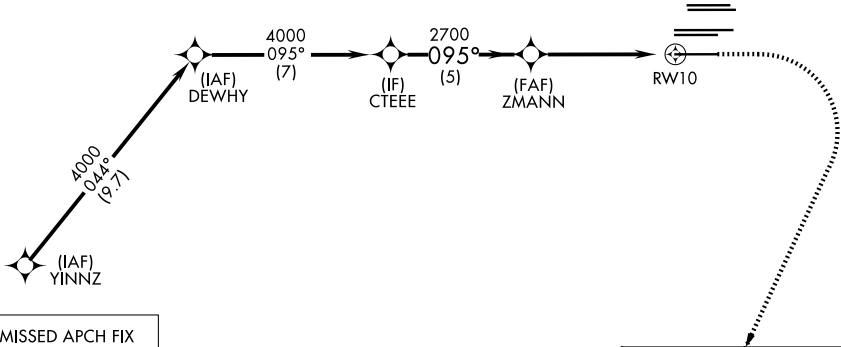
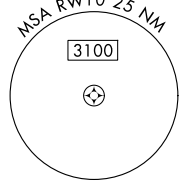
| | | |
|--|------------------------|---|
| WAAS CH 40399 W10A | APP CRS 095° | Rwy Ldg TDZE 1000 Apt Elev 1026 |
|--|------------------------|---|

⚠ For uncompensated Baro-VNAV systems, LNAV/VNAV NA below -7°C (20°F) or above 54°C (130°F). DME/DME RNP-0.3 NA. For inop ALSF-2, increase LNAV/VNAV all Cats visibility to 1½ mile. Simultaneous close parallel approach authorized with ILS PRM and RNAV PRM Rwy 8L or 8R or 9L or 9R, or Rwys 8L and 9L, or Rwys 8L and 9R, or Rwys 8R and 9L, or Rwys 8R and 9R. See additional requirements on AAUP. Dual VHF comm required. Use of FD or AP providing RNAV track guidance required during simultaneous operations.

ALSF-2
MISSED APPROACH:
Climb to 1500 then climbing right turn to 3000 direct SCARR and hold.

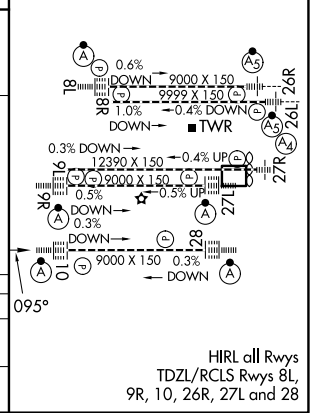
| | | | | |
|-------------------------|---------------------------------------|--|--|---|
| D-ATIS 119.65 | ATLANTA APP CON 127.9 379.9 | ATLANTA TOWER 8L-26R 8R-26L 9L-27R 9R-27L 10-28 RWYS 119.1 125.325 123.85 119.3 119.5 254.4 PRM 133.425 | ALL RWYS 121.9 121.75 121.65 254.4 | GND CON (8L-26R,8R-26L) (9L-27R,9R-27L) 10-28 RWYS 121.9 121.75 121.65 254.4 |
|-------------------------|---------------------------------------|--|--|---|

RADAR REQUIRED



ELEV 1026 **D** TDZE 1000

| | | | | |
|--------------|-------|---------|-------------|------|
| | DEWHY | CTEEE | ZMANN | RW10 |
| | 4000 | 4000 | 2700 | |
| | 7 NM | 5 NM | 5.2 NM | |
| CATEGORY | A | B | C | D |
| LPV DA | | 1200/18 | 200 (200-½) | |
| LNAV/VNAV DA | | 1455/55 | 455 (500-1) | |



RNAV (GPS) PRM Y RWY 10 (SIMULTANEOUS CLOSE PARALLEL)

SE-4, 14 MAY 2026 to 11 JUN 2026

SE-4, 14 MAY 2026 to 11 JUN 2026