

APP CRS	Rwy Ldg	<b>8500</b>
<b>275°</b>	TDZE	<b>990</b>
	Apt Elev	<b>1026</b>

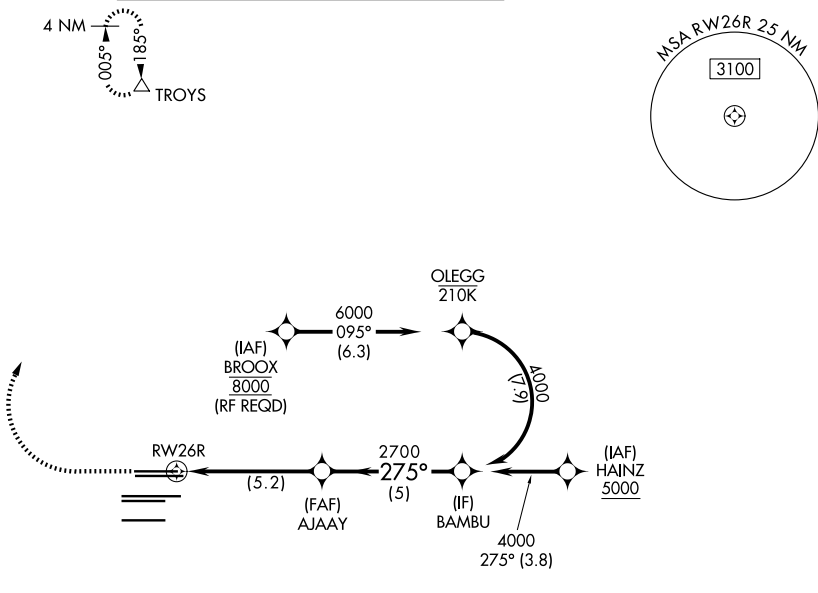
**RNAV (RNP) Z RWY 26R**  
HARTSFIELD/JACKSON ATLANTA INTL (ATL)

D-ATIS <b>119.65</b>	ATLANTA APP CON	ATLANTA TOWER					ALL RWYS	GND CON	ALL RWYS
	<b>127.9 379.9</b>	<b>119.1</b>	<b>125.325</b>	<b>123.85</b>	<b>119.3</b>	<b>119.5</b>	<b>254.4</b>	<b>121.9</b>	<b>121.75 121.65 254.4</b>

For uncompensated Baro-VNAV systems, procedure NA below -8°C (18°F) or above 54°C (130°F). GPS required. Simultaneous approach authorized. Arrival from BROOX NA during simultaneous triple approaches.



MISSED APPROACH: Climb to 1500 then climbing right turn to 3500 direct TROYS and hold.



ELEV 1026 **D** TDZE 990

HIRL all Rwys  
TDZL/RCLS Rwys 8L, 9R, 10, 26R, 27L and 28

1500	3500	TROYS	VGSi and RNAV glidepath not coincident (VGSi Angle 3.00/TCH 69).	
RWY 26R		AJAAY 2700	BAMBU 4000	
5.2 NM		5 NM		GP 3.00° TCH 55
CATEGORY	A	B	C	D
RNP 0.30 DA	1402/45		412 (400-1)	

**AUTHORIZATION REQUIRED**

SE-4, 14 MAY 2026 to 11 JUN 2026

SE-4, 14 MAY 2026 to 11 JUN 2026