

# RNAV (RNP) Z RWY 8L HARTSFIELD/JACKSON ATLANTA INTL (ATL)

APP CRS	Rwy Ldg	<b>8800</b>
<b>095°</b>	TDZE	<b>1015</b>
	Apt Elev	<b>1026</b>

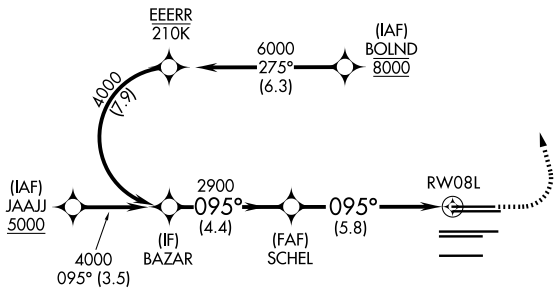
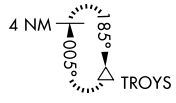
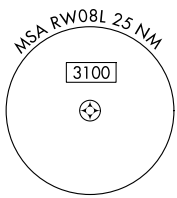
RNP AR APCH - GPS.

▼ For uncompensated Baro-VNAV systems, procedure NA below -5°C or above 54°C.  
For inop ALS, increase RNP 0.15 all Cats RVR to 5500. Simultaneous approach authorized. Arrival from BOLND NA during simultaneous triple approaches.

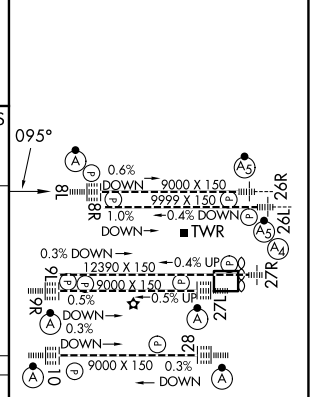
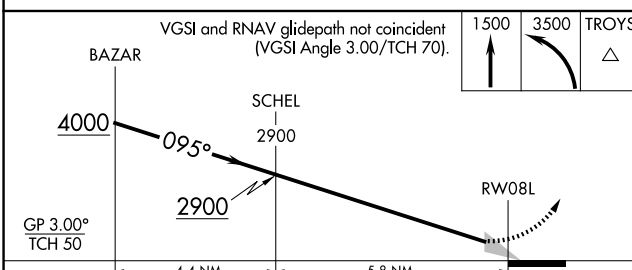
ALS-2

MISSED APPROACH: Climb to 1500 then dimbing left turn to 3500 direct TROYS and hold.

D-ATIS	ATLANTA APP CON	ATLANTA TOWER					ALL RWYS	GND CON	ALL RWYS
<b>119.65</b>	<b>127.9 379.9</b>	<b>119.1</b>	<b>125.325</b>	<b>123.85</b>	<b>119.3</b>	<b>119.5</b>	<b>254.4</b>	<b>121.9</b>	<b>121.75 121.65 254.4</b>



ELEV 1026	<b>D</b>	TDZE 1015
-----------	----------	-----------



CATEGORY	A	B	C	D
RNP 0.15 DA		1380/35	365 (400-%)	
RNP 0.30 DA		1458/45	443 (500-%)	

## AUTHORIZATION REQUIRED

HIRL all Rwys  
TDZL/RCLS Rwys 8L,  
9R, 10, 26R, 27L and 28

SE-4, 14 MAY 2026 to 11 JUN 2026

SE-4, 14 MAY 2026 to 11 JUN 2026