

| | | | |
|--|------------------------|-----------------------------|---|
| WAAS CH 40399 W10A | APP CRS 095° | Rwy Ldg TDZE Apt Elev | 9000 1000 1026 |
|--|------------------------|-----------------------------|---|

RNAV (GPS) Y RWY 10

HARTSFIELD/JACKSON ATLANTA INTL (ATL)

▼ For uncompensated Baro-VNAV systems, LNAV/VNAV NA below -7°C (20°F) or above 54°C (130°F). DME/DME-0.3 RNP NA. For inop ALSF-2, increase LNAV/VNAV all Cats visibility to 1½ mile and LNAV Cats C and D visibility to 1¾ mile. LNAV procedure NA during simultaneous operations. Simultaneous approach authorized with Rwy 8L or 8R or 9L, or Rwys 8L and 9L. Use of FD or AP providing RNAV track guidance required during simultaneous operations.

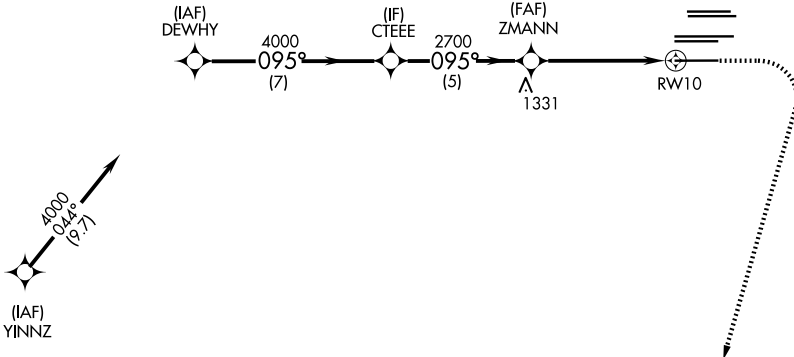
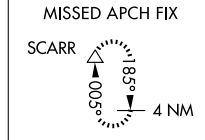
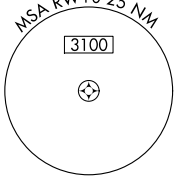
ALSF-2



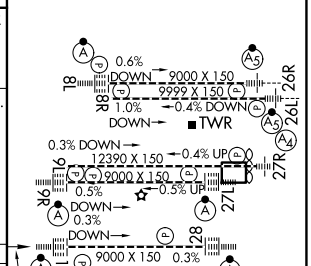
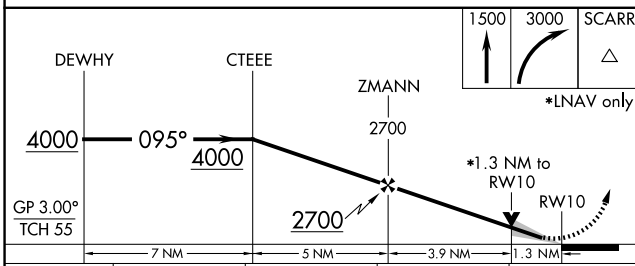
MISSED APPROACH: Climb to 1500 then climbing right turn to 3000 direct SCARR and hold.

| | | | | | | | | |
|-------------------------|---------------------------------------|--|--|--|--|--------------------------|--|----------|
| D-ATIS 119.65 | ATLANTA APP CON 127.9 379.9 | ATLANTA TOWER 8L-26R 8R-26L 9L-27R 9R-27L 10-28 RWYS 119.1 125.325 123.85 119.3 119.5 254.4 | | | | ALL RWYS 121.9 | GND CON 9L-27R, 9R-27L 10-28 RWYS 121.75 121.65 254.4 | ALL RWYS |
|-------------------------|---------------------------------------|--|--|--|--|--------------------------|--|----------|

RADAR REQUIRED



| | | |
|-----------|----------|-----------|
| ELEV 1026 | D | TDZE 1000 |
|-----------|----------|-----------|



| CATEGORY | A | B | C | D |
|--------------|---------|-------------|-------------|-------------|
| LPV DA | | 1200/18 | 200 (200-½) | |
| LNAV/VNAV DA | | 1455/55 | 455 (500-1) | |
| LNAV MDA | 1480/24 | 480 (500-½) | 1480/50 | 480 (500-1) |

HIRL all Rwys
TDZL/RCLS Rwys 8L, 9R, 10, 26R, 27L and 28

SE-4, 14 MAY 2026 to 11 JUN 2026

SE-4, 14 MAY 2026 to 11 JUN 2026