

WAAS CH 99300 W08B	APP CRS 095°	Rwy Ldg 8800 TDZE 1015 Apt Elev 1026
--	------------------------	---

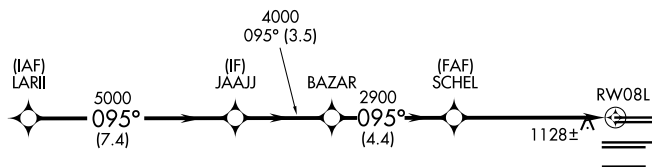
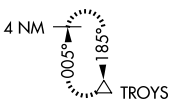
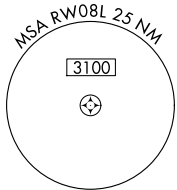
RNAV (GPS) Y RWY 8L

HARTSFIELD/JACKSON ATLANTA INTL (ATL)

⚠ For uncompensated Baro-VNAV systems, LNAV/VNAV NA below -7°C (20°F) or above 54°C (130°F). DME/DME RNP-0.3 NA. For inop ALSF-2, increase LNAV/VNAV all Cats visibility to 1¼ miles. Helicopter visibility reduction below RVR 4000 NA. LNAV procedure NA during simultaneous operations. Simultaneous approach authorized with Rwy 9L or 9R or 10, or Rwy 8L and 10. Use of FD or AP providing RNAV track guidance required during simultaneous operations.

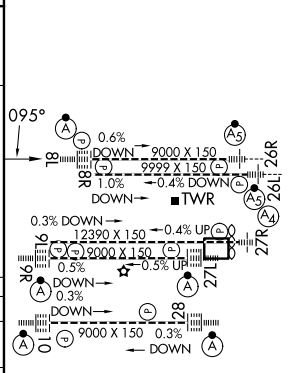
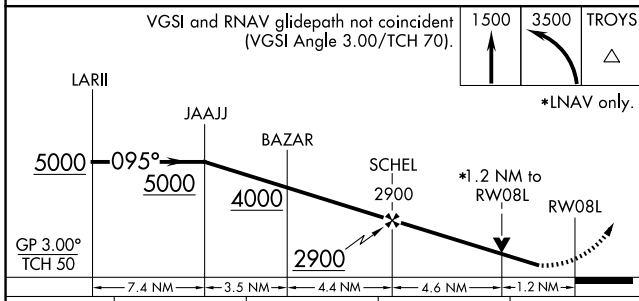
ALSF-2
MISSED APPROACH:
Climb to 1500 then
climbing left turn to
3500 direct TROYS
and hold.

D-ATIS 119.65	ATLANTA APP CON 127.9 379.9	ATLANTA TOWER 8L-26R 8R-26L 9L-27R 9R-27L 10-28 RWYS 119.1 125.325 123.85 119.3 119.5 254.4				ALL RWYS 121.9	GND CON 121.75	ALL RWYS 121.65 254.4
-------------------------	--	--	--	--	--	-----------------------------	--------------------------	------------------------------------



RADAR REQUIRED

ELEV 1026 **D** TDZE 1015



CATEGORY	A	B	C	D
LPV DA		1215/18	200 (200-½)	
LNAV/VNAV DA		1404/45	389 (400-¾)	
LNAV MDA	1460/24	445 (500-½)	1460/45	445 (500-¾)

HIRL all Rwy's
TDZL/RCLS Rwy's 8L,
9R, 10, 26R, 27L and 28

SE-4, 14 MAY 2026 to 11 JUN 2026

SE-4, 14 MAY 2026 to 11 JUN 2026