

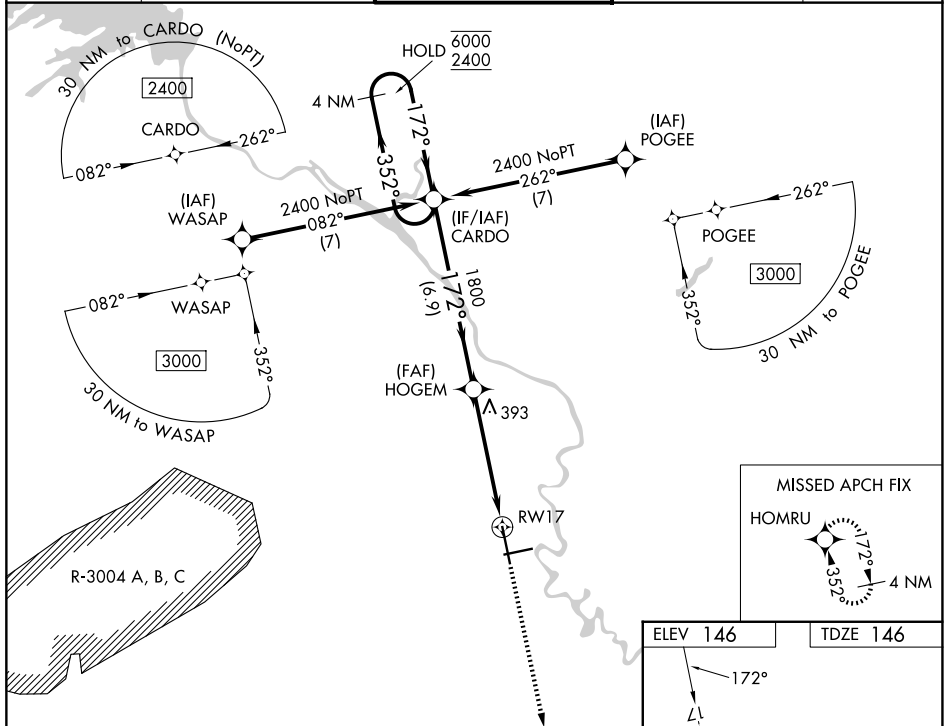
WAAS CH <b>77504</b> <b>W17A</b>	APP CRS <b>172°</b>	Rwy Ldg TDZE <b>146</b> Apt Elev <b>146</b>	<b>8001</b>
--	------------------------	---	-------------

# RNAV (GPS) RWY 17

AUGUSTA RGNL AT BUSH FLD (AGS)

RNP APCH - GPS.		MALSR	MISSED APPROACH: Climb to 2100 direct HOMRU and hold.
<p>▼ For uncompensated Baro-VNAV systems, LNAV/VNAV NA below -6°C or above 54°C. ▲ For inop ALS, increase LNAV/VNAV all Cats visibility to RVR 4500.</p>			

ATIS <b>132.75</b>	AUGUSTA APP CON* <b>126.8 270.3</b>	AUGUSTA TOWER* <b>118.7 (CTAF) 239.3</b>	GND CON <b>121.9 348.6</b>	UNICOM <b>122.95</b>
-----------------------	--	---	-------------------------------	-------------------------



SE-4, 14 MAY 2026 to 11 JUN 2026

SE-4, 14 MAY 2026 to 11 JUN 2026

4 NM Holding Pattern		VGSI and RNAV glidepath not coincident (VGSI Angle 3.00/TCH 71).		2100	HOMRU
<p>6000 ← 352°</p> <p>2400 ← 172°</p> <p>GP 3.00° TCH 57</p>		<p>HOGEM 1800</p> <p>1.5 NM to RWY 17</p> <p>1800</p>		<p>↑</p> <p>⬠</p>	
6.9 NM		3.5 NM		1.5 NM	
CATEGORY	A	B	C	D	
LPV DA		351/24	205 (300-½)		
LNAV/VNAV DA		460/24	314 (400-½)		
LNAV MDA	700/24	554 (600-½)	700/60	554 (600-1¼)	
CIRCLING	780-1	634 (700-1)	780-1¾	940-2½	
			634 (700-1¾)	794 (800-2½)	

