

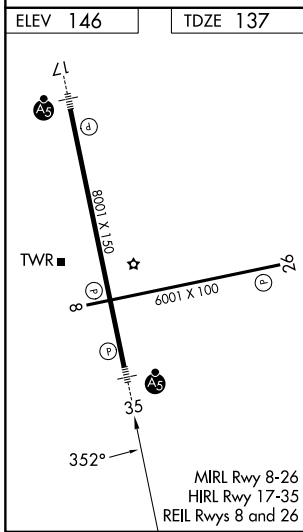
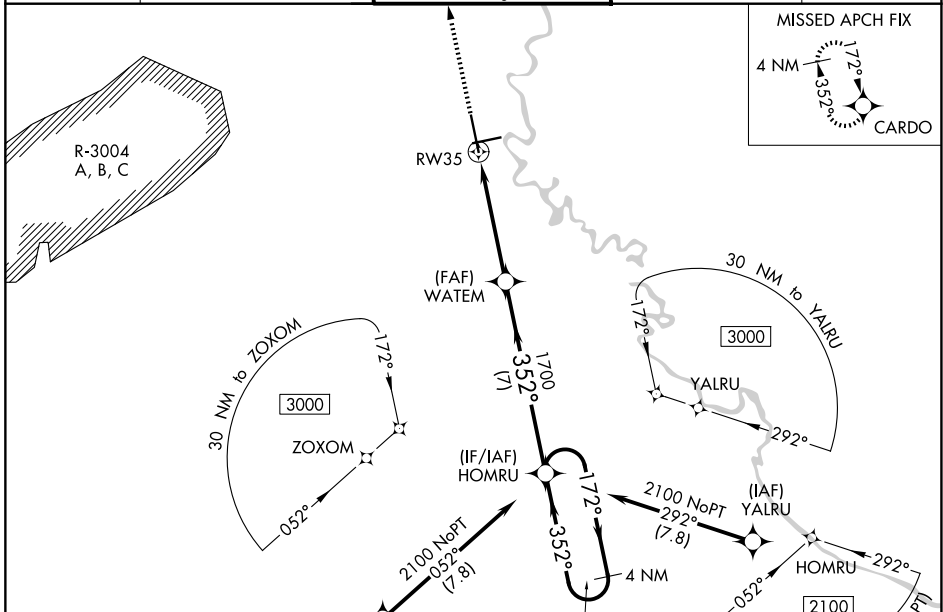
WAAS CH <b>97303</b> <b>W35A</b>	APP CRS <b>352°</b>	Rwy Ldg TDZE <b>137</b> Apt Elev <b>146</b>	<b>8001</b>
--	------------------------	---	-------------

# RNAV (GPS) RWY 35

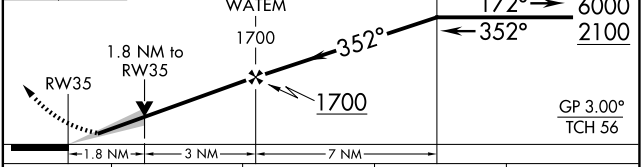
AUGUSTA RGNL AT BUSH FLD (AGS)

RNP APCH - GPS.		MALSR	MISSED APPROACH: Climb to 2400 direct CARDO and hold.
For uncompensated Baro-VNAV systems, LNAV/VNAV NA below -6°C or above 54°C.			

ATIS <b>132.75</b>	AUGUSTA APP CON* <b>126.8 270.3</b>	AUGUSTA TOWER* <b>118.7 (CTAF) 239.3</b>	GND CON <b>121.9 348.6</b>	UNICOM <b>122.95</b>
-----------------------	--	---	-------------------------------	-------------------------



2400 CARDO VGSi and RNAV glidepath not coincident (VGSi Angle 3.00/TCH 72). 4 NM Holding Pattern HOMRU



CATEGORY	A	B	C	D
LPV DA	387/24		250 (300-1/2)	
LNAV/VNAV DA	668/55		531 (600-1)	
LNAV MDA	780/24	643 (700-1/2)	780-1 3/8	643 (700-1 3/8)
CIRCLING	780-1	634 (700-1)	780-1 7/8	940-2 1/2
			634 (700-1 7/8)	794 (800-2 1/2)

SE-4, 14 MAY 2026 to 11 JUN 2026

SE-4, 14 MAY 2026 to 11 JUN 2026