

APP CRS	Rwy Ldg	<b>6001</b>
<b>082°</b>	TDZE	<b>137</b>
	Apt Elev	<b>146</b>

# RNAV (GPS) Y RWY 8

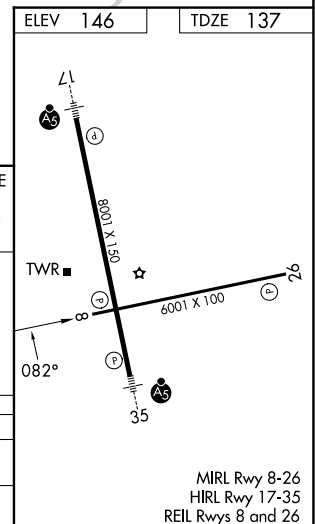
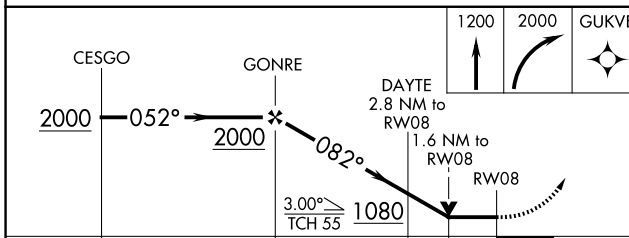
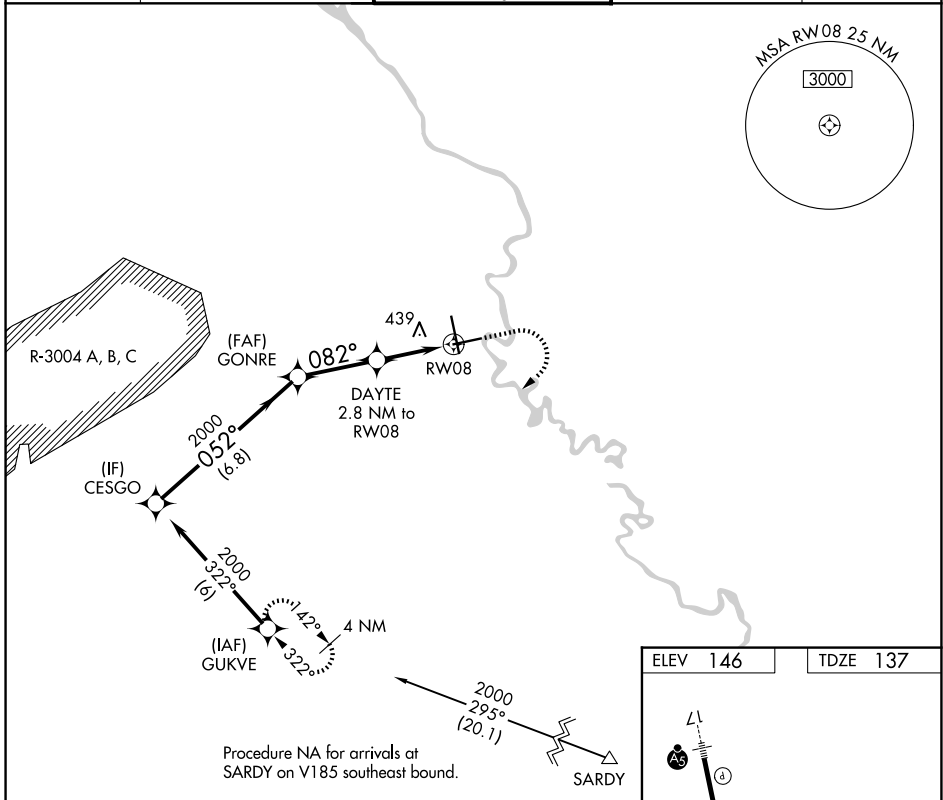
AUGUSTA RGNL AT BUSH FLD (AGS)

RNP APCH - GPS.

**▼** Rwy 8 helicopter visibility reduction below  $\frac{3}{4}$  SM NA. VDP NA with Daniel Fld altimeter setting. **▲** When local altimeter setting not received, use Daniel Fld altimeter setting and increase all MDA's 60 feet; increase LNAV Cats C and D visibility  $\frac{1}{8}$  SM and Circling Cats C and D visibility  $\frac{1}{4}$  SM.

**MISSED APPROACH:**  
Climb to 1200 then climbing right turn to 2000 direct GUKVE and hold.

ATIS	AUGUSTA APP CON*	AUGUSTA TOWER*	GND CON	UNICOM
<b>132.75</b>	<b>126.8 270.3</b>	<b>118.7 (CTAF) 239.3</b>	<b>121.9 348.6</b>	<b>122.95</b>



CATEGORY	A	B	C	D
LNAV MDA	700-1	563 (600-1)	700- $1\frac{1}{8}$	563 (600- $1\frac{1}{8}$ )
CIRCLING	780-1	634 (700-1)	780- $1\frac{3}{4}$ 634 (700- $1\frac{3}{4}$ )	940- $2\frac{1}{2}$ 794 (800- $2\frac{1}{2}$ )

SE-4, 14 MAY 2026 to 11 JUN 2026

SE-4, 14 MAY 2026 to 11 JUN 2026