

STUGE THREE ARRIVAL

AUGUSTA APP CON ★
119.15 284.625
ATIS
132.75

COLLIERS
113.9 IRQ
Chan 86

COLUMBIA
114.7 CAE
Chan 94

ALLENDALE
116.7 ALD

TURBOJET VERTICAL
NAVIGATION
PLANNING INFORMATION
Expect clearance to cross
at 14,000'.

CHARLESTON
113.5 CHS
Chan 82

TURBOJET VERTICAL
NAVIGATION
PLANNING INFORMATION
Expect clearance to cross
at FL180.

SAVANNAH
115.95 SAV
Chan 106 (Y)

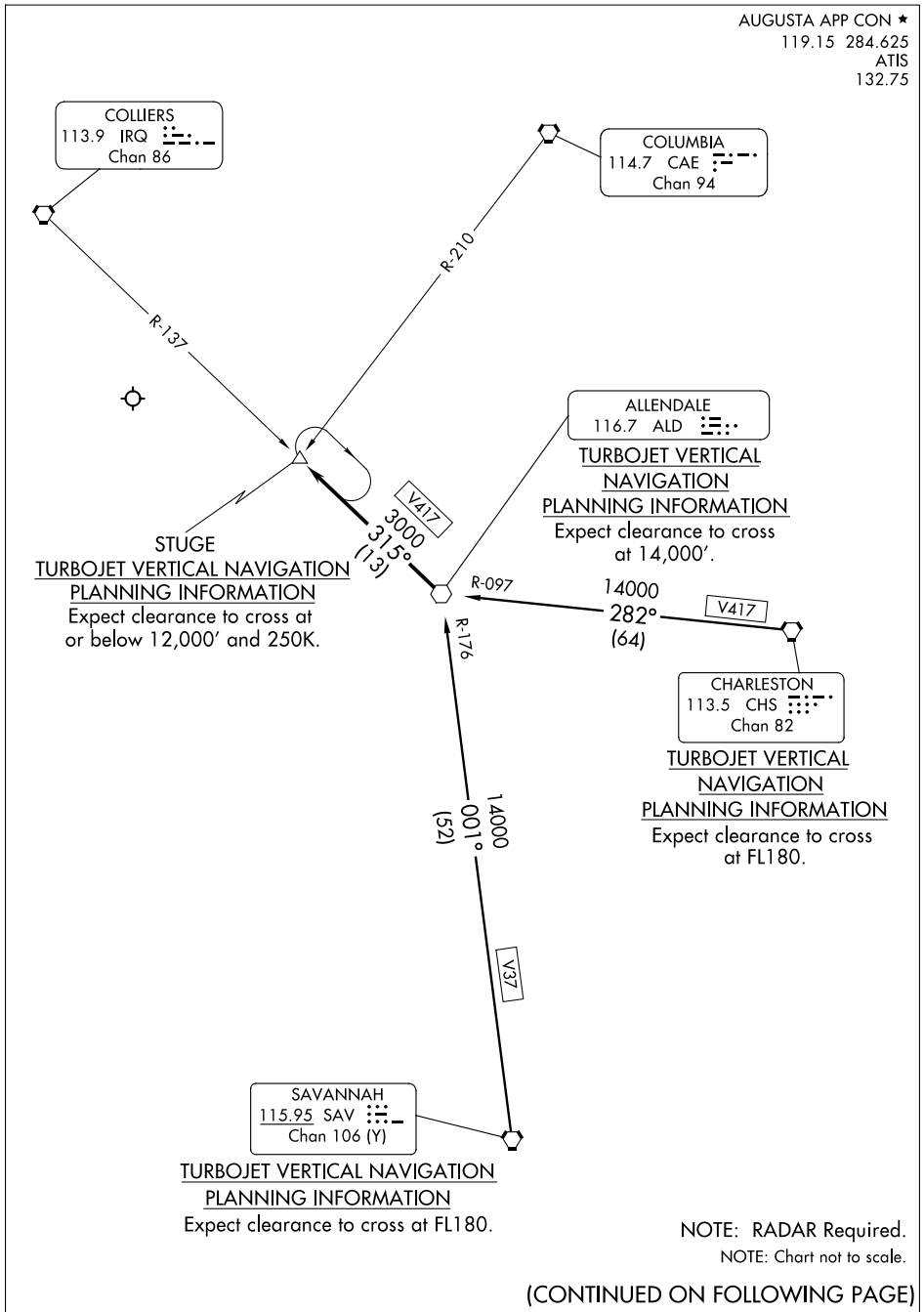
TURBOJET VERTICAL NAVIGATION
PLANNING INFORMATION
Expect clearance to cross at FL180.

NOTE: RADAR Required.
NOTE: Chart not to scale.

(CONTINUED ON FOLLOWING PAGE)

SE-4, 14 MAY 2026 to 11 JUN 2026

SE-4, 14 MAY 2026 to 11 JUN 2026



STUGE THREE ARRIVAL

ARRIVAL DESCRIPTION

CHARLESTON TRANSITION (CHS.STUGE3): From over CHS VORTAC via CHS R-282 and ALD R-097 to ALD VOR. Thence. . . .

SAVANNAH TRANSITION (SAV.STUGE3): From over SAV VORTAC via SAV R-001 and ALD R-176 to ALD VOR. Thence. . . .

. . . .from over ALD VOR via ALD R-315 to STUGE INT, MEA 3000. Expect RADAR vectors to final approach course.

SE-4, 14 MAY 2026 to 11 JUN 2026

SE-4, 14 MAY 2026 to 11 JUN 2026