

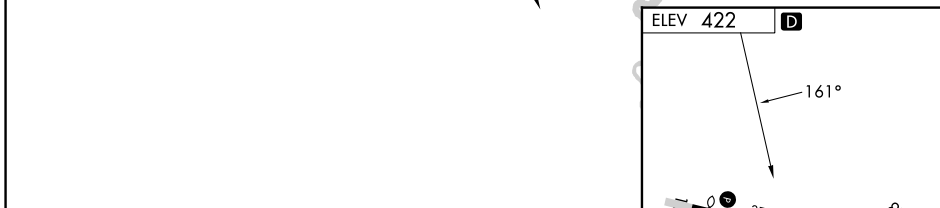
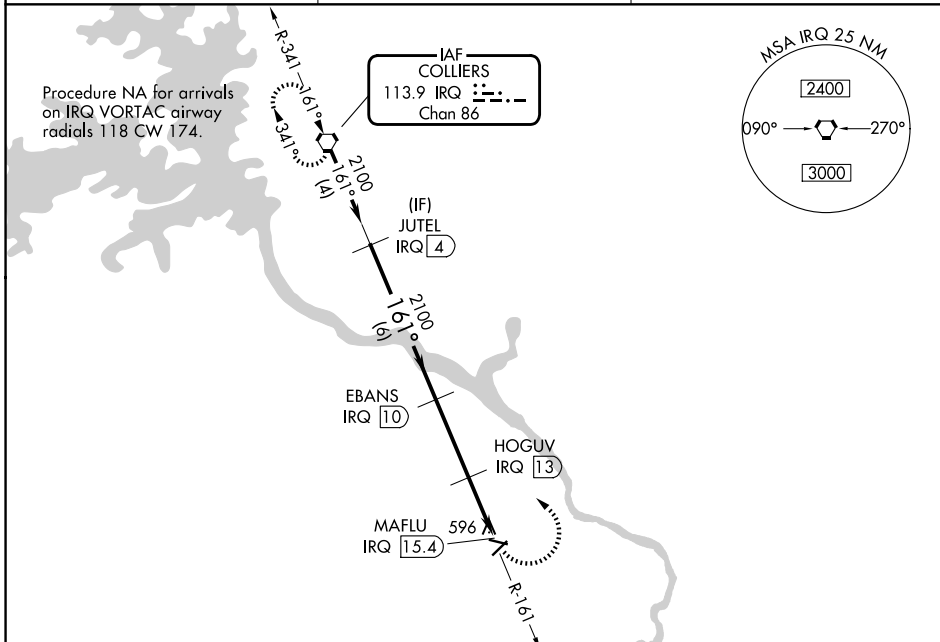
VORTAC IRQ <b>113.9</b> Chan <b>86</b>	APP CRS <b>161°</b>	Rwy Ldg TDZE Apt Elev	<b>N/A</b> <b>N/A</b> <b>422</b>
--	------------------------	-----------------------------	--

**VOR/DME-B**  
DANIEL FLD (DNL)

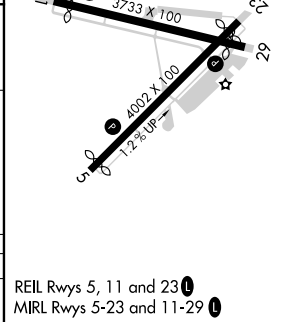
**⚠** When local altimeter setting not received, use Augusta Rgnl at Bush Fld altimeter setting and increase all MDA 60 feet.  
**⚠** Procedure NA at night. Helicopter visibility reduction below 1 SM NA.

MISSED APPROACH: Climbing left turn to 2100 direct IRQ VORTAC and hold.

ASOS <b>135.275</b>	AUGUSTA APP CON ★ <b>126.8 270.3</b>	UNICOM <b>123.05</b> (CTAF) <b>0</b>
------------------------	---	---



Procedure Turn NA	JUTEL IRQ 4	EBANS IRQ 10	HOGUV IRQ 13	MAFLU IRQ 15.4
	2100	2100	1160	
	6 NM	3 NM	2.4 NM	
CATEGORY	A	B	C	D
CIRCLING	920-1	498 (500-1)	1400-3	978 (1000-3)



SE-4, 14 MAY 2026 to 11 JUN 2026

SE-4, 14 MAY 2026 to 11 JUN 2026