

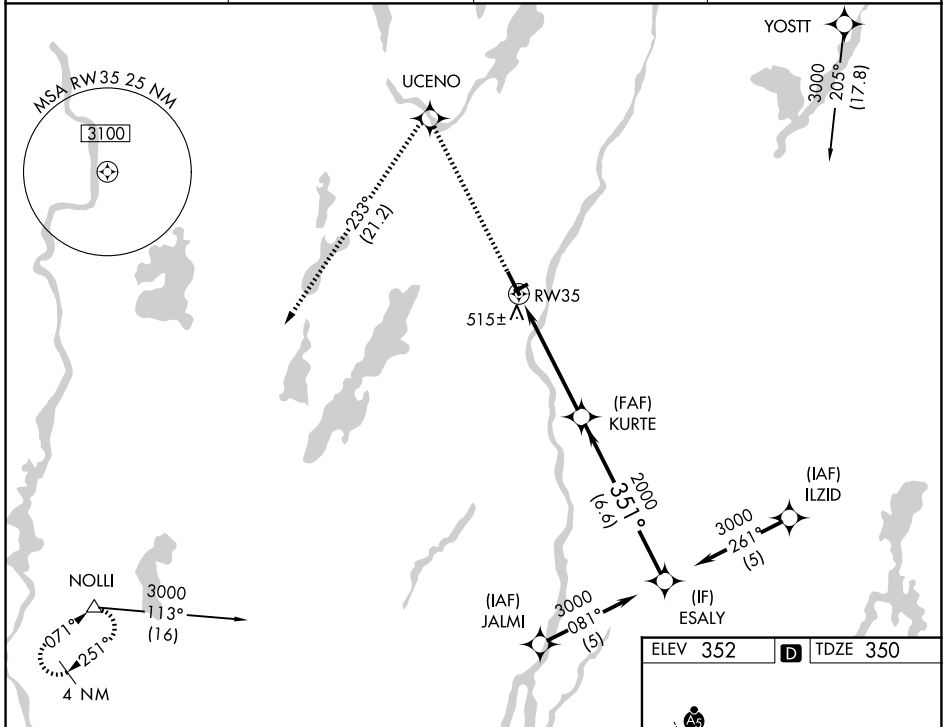
WAAS CH <b>70406</b> <b>W35A</b>	APP CRS <b>351°</b>	Rwy Ldg TDZE Apt Elev	<b>5002</b> <b>350</b> <b>352</b>
--	------------------------	-----------------------------	---

# RNAV (GPS) RWY 35

AUGUSTA STATE (AUG)

RNP APCH.	<p>⚠ Circling to Rwy 26 NA at night. Rwy 35 helicopter visibility reduction below 3/4 SM NA.                  ⚠ For uncompensated Baro-VNAV systems, LNAV/VNAV NA below -15°C or above 54°C.</p>	MISSED APPROACH: Climb to 3000 direct UCENO and left turn on track 233° to NOLLI and hold.
-----------	--	--

ASOS <b>118.325</b>	PORTLAND APP CON * <b>128.35 299.2</b>	CLNC DEL <b>119.95 299.2</b>	UNICOM <b>123.0 (CTAF) 0</b>
------------------------	---	---------------------------------	---------------------------------

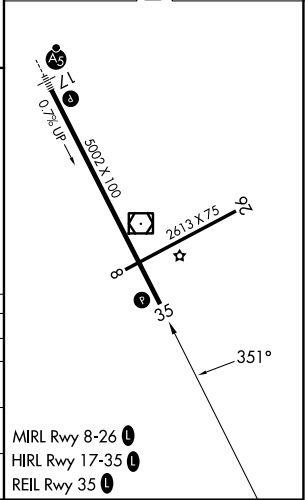


NE-1, 14 MAY 2026 to 11 JUN 2026

NE-1, 14 MAY 2026 to 11 JUN 2026

ELEV 352	<b>D</b> TDZE 350
----------	-------------------

3000	UCENO	↷	Ir 233°	NOLLI	VGSI and RNAV glidepath not coincident (VGSI Angle 3.00/TCH 40).			
* LNAV only.					ESALY			
					KURTE 351° 3000 2000 GP 3.00° TCH 55			
CATEGORY	A		B		C		D	
LPV DA	610-1		260 (300-1)					
LNAV/VNAV DA	850-1 3/4		500 (500-1 3/4)					
LNAV MDA	840-1 490 (500-1)		840-1 3/4 490 (500-1 3/4)		840-1 1/2 490 (500-1 1/2)			
CIRCLING	880-1 3/4 528 (600-1 3/4)		980-1 3/4 628 (700-1 3/4)		1160-2 1/2 808 (900-2 1/2)			



- MIRL Rwy 8-26 0
- HIRL Rwy 17-35 0
- REIL Rwy 35 0