

WAAS CH 82317	APP CRS 245°	Rwy Ldg TDZE Apt Elev	11801 624 633
W25A			

RNAV (GPS) RWY 25

OSCODA/WURTSMITH (OSC)

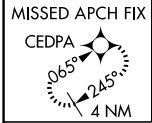
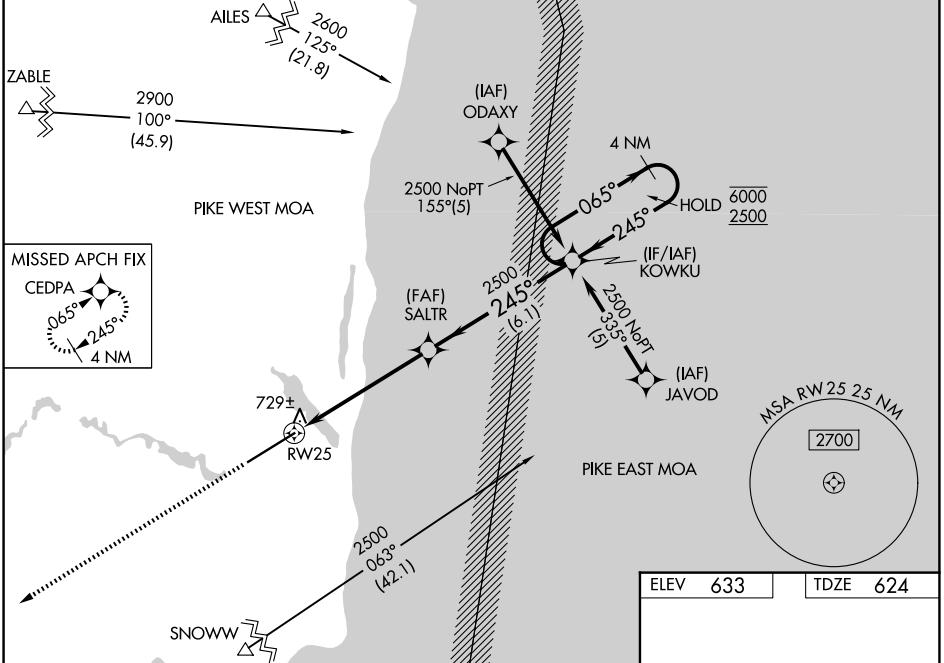
RNP APCH.

▼ Circling NA southeast of Rwy 7-25. Baro-VNAV and VDP NA when using Alpena altimeter setting. For uncompensated Baro-VNAV systems, LNAV/VNAV NA below -16°C or above 54°C. When local altimeter setting not received, use Alpena altimeter setting and increase all DA 96 feet and all MDA 100 feet. Increase LNAV/VNAV all Cats and LNAV and Circling Cat C visibility ¼ SM, and Circling Cat D visibility ½ SM. For inop ALS, increase LNAV Cats C and D visibility to 1 SM. For inop ALS when using Alpena altimeter setting, increase LPV all Cats visibility to ¾ SM.

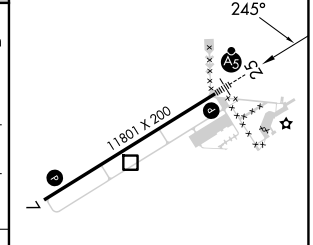
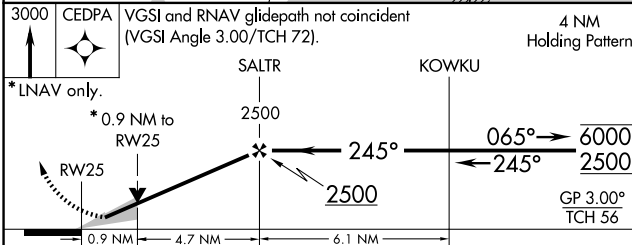


MALSR MISSED APPROACH:
Climb to 3000 direct
CEDPA and hold.

AWOS-3P 118.7	MINNEAPOLIS CENTER 125.475 269.45	UNICOM 123.0 (CTAF) 0
-------------------------	---	---------------------------------



ELEV 633	TDZE 624
----------	----------



CATEGORY	A	B	C	D
LPV DA	824-½ 200 (200-½)			
LNAV/VNAV DA	1004-¾ 380 (400-¾)			
LNAV MDA	980-½ 356 (400-½)	980-⅝ 356 (400-⅝)	980-1 356 (400-1)	980-1 356 (400-1)
CIRCLING	1140-1 507 (600-1)	1160-1½ 527 (600-1½)	1300-2 667 (700-2)	1300-2 667 (700-2)

REIL Rwy 7 0
HIRL Rwy 7-25 0

EC-1, 14 MAY 2026 to 11 JUN 2026

EC-1, 14 MAY 2026 to 11 JUN 2026