

WAAS CH 97417 W07A	APP CRS 065°	Rwy Ldg 11801 TDZE 633 Apt Elev 633
--	------------------------	--

RNAV (GPS) RWY 7

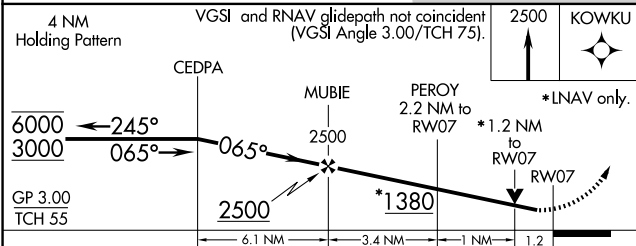
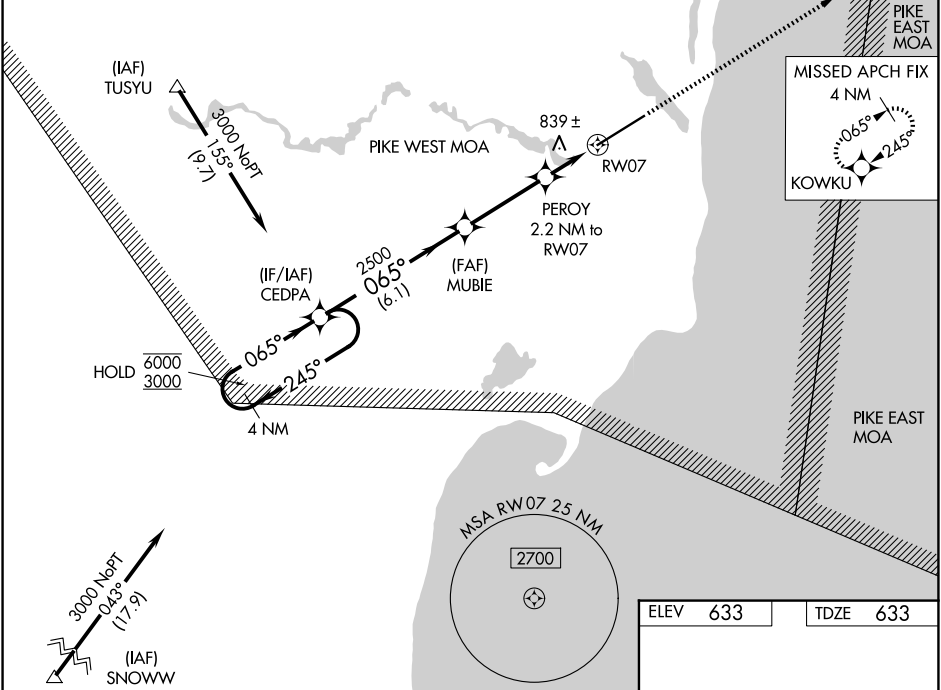
OSCODA/WURTSMITH (OSC)

RNP APCH:

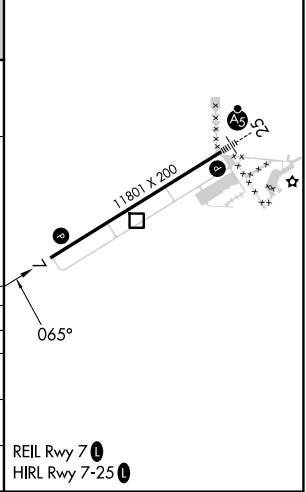
▼ Circling NA southeast of Rwy 7-25. Baro-VNAV and VDP NA when using Alpena altimeter setting. Rwy 7 helicopter visibility reduction below 3/4 SM NA. For uncompensated Baro-VNAV systems, LNAV/VNAV NA below -16°C or above 54°C. When local altimeter setting not received use Alpena altimeter setting and increase all DA 96 feet and all MDA 100 feet. Increase LPV all Cats and LNAV Cat C and D visibility 1/4 SM, and Circling Cat C visibility 1/4 SM and Cat D visibility 1/2 SM.

MISSED APPROACH:
Climb to 2500 direct
KOWKU and hold.

AWOS-3P 118.7	MINNEAPOLIS CENTER 125.475 269.45	UNICOM 123.0 (CTAF)
-------------------------	---	-------------------------------



ELEV 633	TDZE 633
-----------------	-----------------



CATEGORY	A	B	C	D
LPV DA	892-3/4 259 (300-3/4)			
LNAV/VNAV DA	1148-1 3/4 515 (600-1 3/4)			
LNAV MDA	1080-1 447 (500-1)	1080-1 3/8 447 (500-1 3/8)	1080-1 1/2 447 (500-1 1/2)	
CIRCLING	1140-1 507 (600-1)	1160-1 1/2 527 (600-1 1/2)	1300-2 667 (700-2)	

EC-1, 14 MAY 2026 to 11 JUN 2026

EC-1, 14 MAY 2026 to 11 JUN 2026