


VORTAC CEC 109.0 Chan 27	APP CRS 131°	Rwy Ldg TDZE Apt Elev	5002 60 61
---------------------------------------	------------------------	-----------------------------	---------------------------------------

VOR RWY 12

JACK MC NAMARA FLD (CEC)

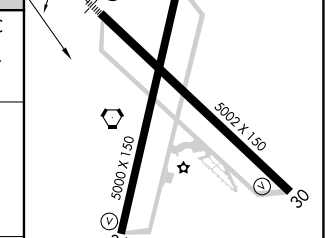
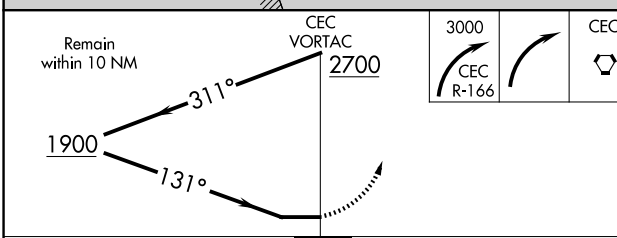
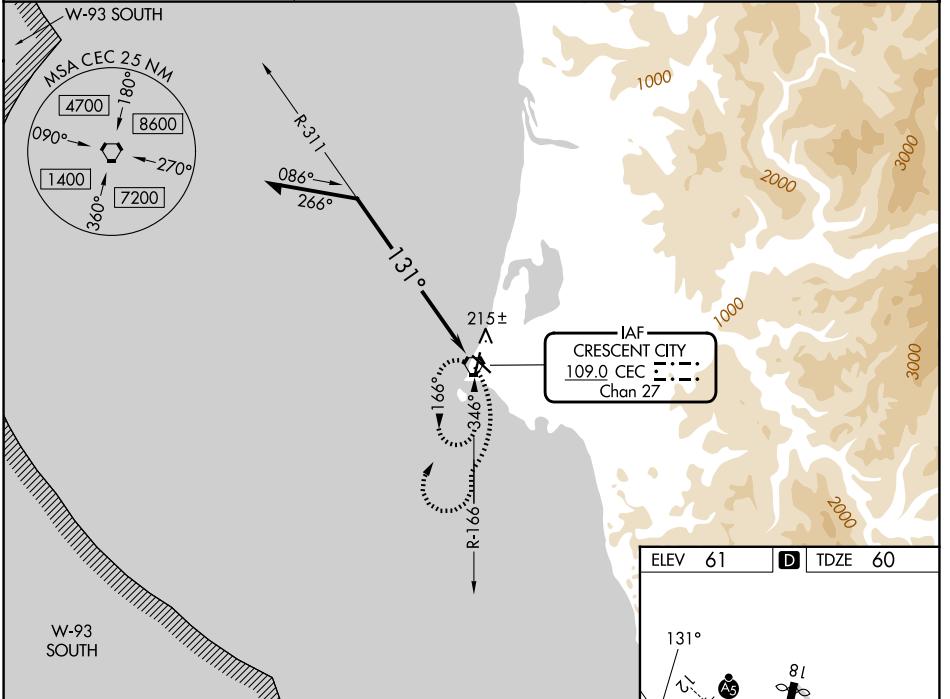
⚠ When local altimeter setting not received, use Brookings altimeter setting and increase all MDA 100 feet; increase S-12 Cat C/D visibility 3/8 mile, Circling Cat D visibility 1/4 mile and Circling Cat C visibility 1/2 mile. For inop MALSAR increase S-12 Cat A/B visibility to 1 mile, and Cat C/D visibility to 1 1/8 mile. For inop MALSAR when using Brookings altimeter setting, increase S-12 Cat A/B visibility to 1 mile, and Cat C/D visibility to 1 1/8 mile. Night Landing: Rwy 36 operational VGSI required, remain on or above VGSI glidepath until threshold. Night Landing: Rwy 18, 30 NA.

MALSAR



MISSED APPROACH: Climbing right turn to 3000 on CEC VORTAC R-166 then right turn direct CEC VORTAC and hold.

ASOS 119.925	SEATTLE CENTER 124.85 306.3	UNICOM 122.8 (CTAF) 📻
------------------------	---------------------------------------	--



CATEGORY	A	B	C	D
S-12	520-3/4	460 (500-3/4)	520-1	460 (500-1)
CIRCLING	540-1	479 (500-1)	640-1 1/2 579 (600-1 1/2)	640-2 579 (600-2)

HIRL Rwy 12-30 **📻**
MIRL Rwy 18-36 **📻**
REIL Rwys 18, 30 and 36 **📻**

SW-2, 14 MAY 2026 to 11 JUN 2026

SW-2, 14 MAY 2026 to 11 JUN 2026