

COCOA BEACH, FLORIDA

ILS or LOC RWY 21

LOC I-PKC 110.9	APCH CRS 207°	Rwy Idg TDZE Arpt Elev 9008 7 8
---------------------------	-------------------------	---

[USAF]

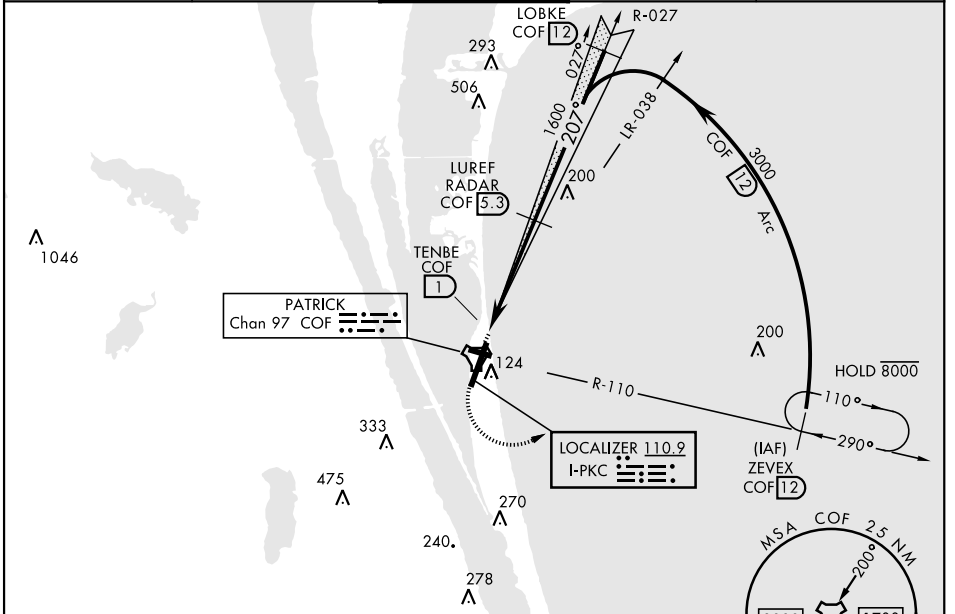
PATRICK SFB (KCOF)

DME required

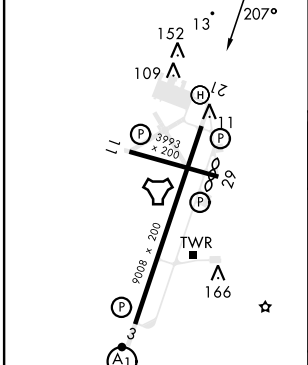
▼ * When circling to Rwy 29 at night, operational VGSi required, remain on or above VGSi glidepath until threshold. Circling not authorized NW of Rwy 3-21.

MISSED APPROACH: Climb to 900, then climbing left turn to 3000 and intercept COF TACAN R-110 direct ZEVEX/12 DME and hold.

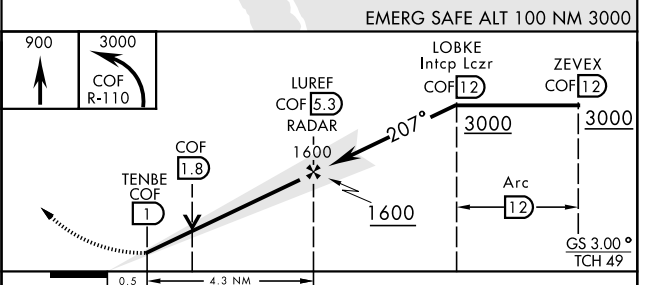
ATIS ★ 119.175 273.5	ORLANDO APP CON★ 126.025 281.425	TOWER★ 133.75 269.375	GND CON★ 124.35 335.8	CLNC DEL★ 118.4 289.4
--------------------------------	--	---------------------------------	---------------------------------	---------------------------------



ELEV	8	TDZE	7
------	---	------	---



HIRL Rwy 3-21	MIRL Rwy 11-29
FAF to MAP 4.3 NM	
Knots	60 90 120 150 180
Min:Sec	4:18 2:52 2:09 1:43 1:26



EMERG SAFE ALT 100 NM 3000				
CATEGORY	A	B	C	D
S-ILS 21	207/40		200	(200-34)
S-LOC 21	460/55	453 (500-1)	460-1 4/8 453 (500-1 3/8)	560-2
CIRCLING*	520-1	512 (600-1)	540-1 1/2 532 (600-1 1/2)	552 (600-2)

COCOA BEACH, FLORIDA

28° 14' N-80° 37' W

PATRICK SFB (KCOF)

Amdt 3 13JUN24

ILS or LOC RWY 21

SE-3, 14 MAY 2026 to 11 JUN 2026

SE-3, 14 MAY 2026 to 11 JUN 2026