

# RIVER FOUR DEPARTURE

PATRICK SFB (KCOF)

COCOA BEACH, FLORIDA

(USAF)

ATIS ★  
 119.175 273.5  
 CLNC DEL ★  
 118.4 289.4  
 GND CON ★  
 124.35 335.8  
 TOWER ★  
 133.75 269.375  
 ORLANDO DEP CON ★  
 126.025 281.425

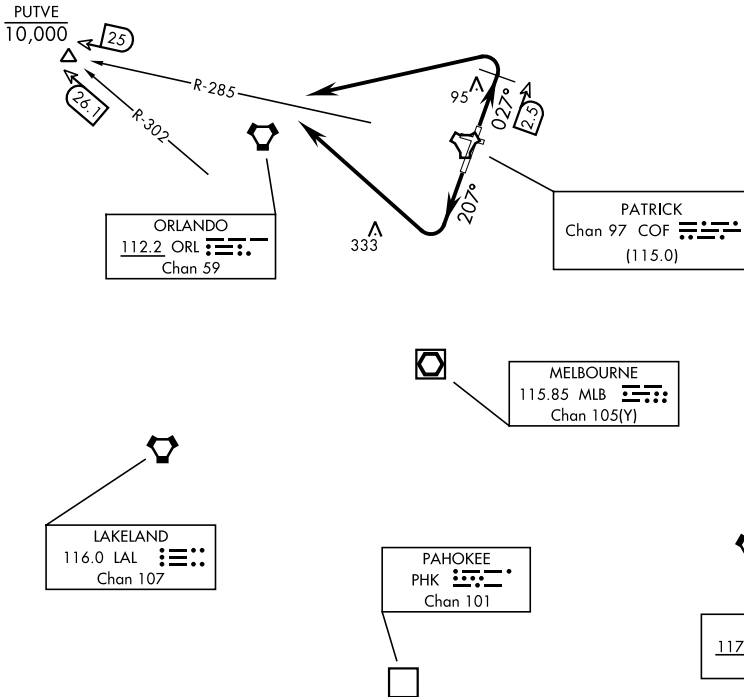
DME required

Rwy	Knots	60	120	180	240	300	360
03/21	V/V(fpm)	210	420	630	840	1050	1260

Minimum Climb Rate to 500

**TOP ALTITUDE  
2000**

ORMOND BEACH  
 112.6 OMN   
 Chan 73



NOTE: Chart not to scale

## DEPARTURE ROUTE DESCRIPTION

Expect clearance to filed altitude/flight level 10 minutes after departure.

**TAKEOFF RWY 03:** Climb on hdg 027° to COF TACAN 2.5 DME, then left turn to intercept COF R-285 to cross PUTVE (COF 25 DME/MLB VOR/DME 26.1 DME) at or below 10,000, maintain 2000 or higher as assigned.

**TAKEOFF RWY 21:** Climb on hdg 207°, then right turn to intercept COF TACAN R-285 to cross PUTVE (COF 25 DME/MLB VOR/DME 26.1 DME) at or below 10,000, maintain 2000 or higher as assigned.

# RIVER FOUR DEPARTURE

Amdt 1 28NOV24

COCOA BEACH, FLORIDA

PATRICK SFB (KCOF)

SE-3, 14 MAY 2026 to 11 JUN 2026

SE-3, 14 MAY 2026 to 11 JUN 2026