

BANGOR, MAINE

HI-ILS Z or LOC Z RWY 15

LOC/DME I-JVH 109.5 Chan 32	APCH CRS 150°	Rwy ldg 11,440 TDZE 192 Arprt Elev 192
---	-------------------------	---

[USAF]

BANGOR INTL (KBGR)

DME required

ALSF-2

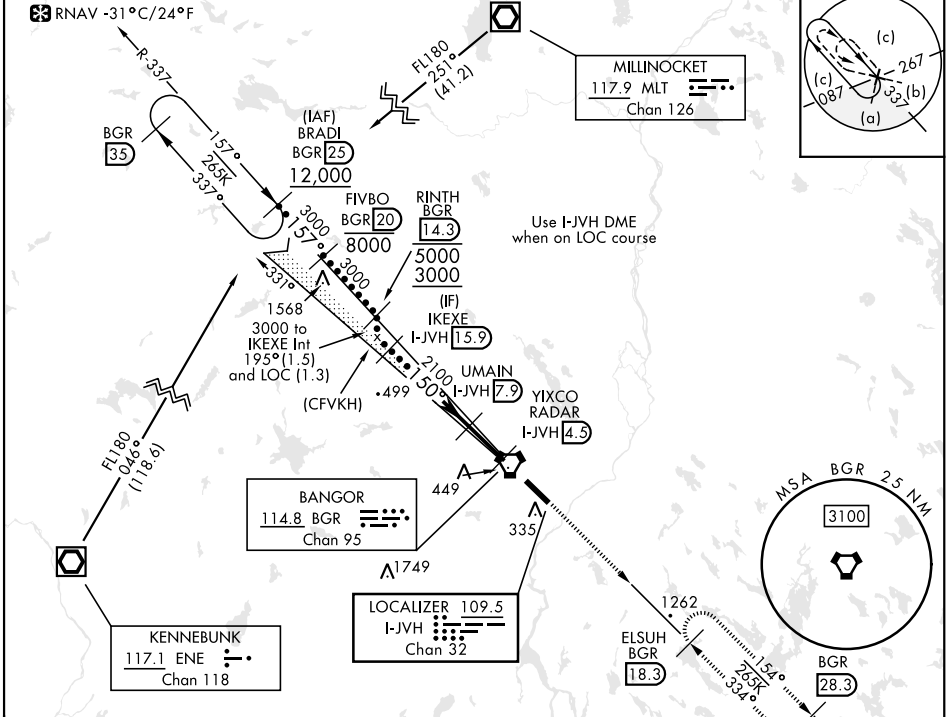
MISSED APPROACH: Climb to 3000 via heading 150° and BGR VORTAC R-154 to ELSUH (R-154/18.3 DME) and hold.

▼ * When ALS inop, increase CAT E RVR to 40.
** When ALS inop, increase CAT CDE vis to 1 3/8 miles.

ATIS 127.75	APP CON 118.925 239.3	TOWER 120.7 233.7	GND CON 121.9 348.6	ASR
-----------------------	---------------------------------	-----------------------------	-------------------------------	-----

*** Circling not authorized NE of Rwy 15-33.

RNAV -31° C/24° F

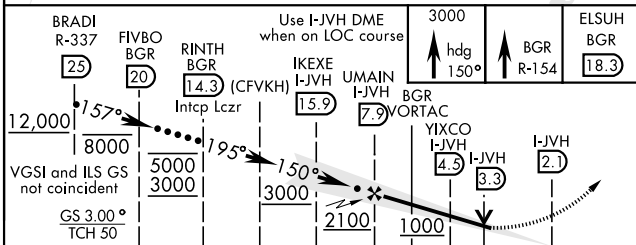


Use I-JVH DME when on LOC course

NE-1, 14 MAY 2026 to 11 JUN 2026

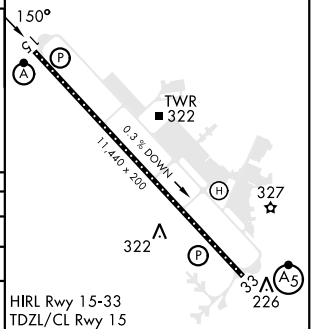
NE-1, 14 MAY 2026 to 11 JUN 2026

EMERG SAFE ALT 100 NM 7500



ELEV	192	TDZE	192
------	-----	------	-----

CATEGORY	C	D	E
S-ILS 15*	392/18	200 (200-1/2)	
S-LOC 15**	660/50	468 (500-1)	
CIRCLING***	740-1 1/2	820-2	880-2 1/2
	548 (600-1 1/2)	628 (700-2)	688 (700-2 1/2)



BANGOR, MAINE

44°48'N-68°50'W

BANGOR INTL (KBGR)

Amrd 2 02DEC21

HI-ILS Z or LOC Z RWY 15