

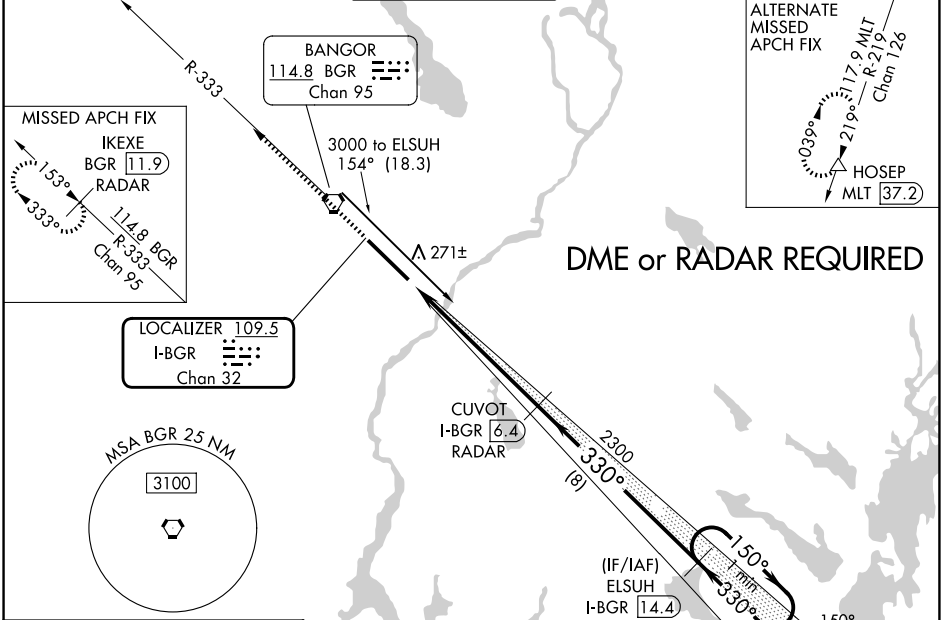
LOC/DME I-BGR 109.5 Chan 32	APP CRS 330°	Rwy Ldg 11440 TDZE 163 Apt Elev 192
---	------------------------	--

ILS RWY 33 (SA CAT I & II)

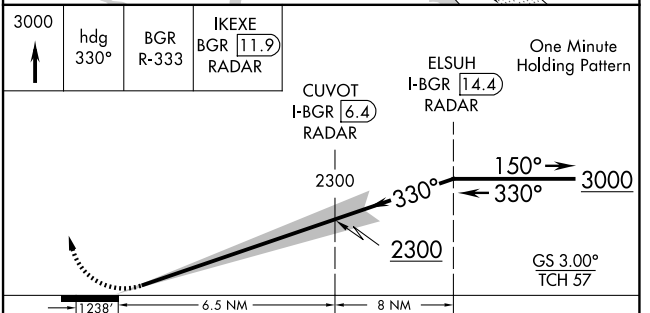
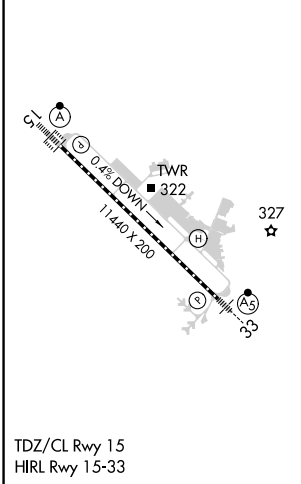
BANGOR INTL (BGR)

	SA CAT I: Requires specific OPSPEC, MSPEC, or LOA approval and use of HUD to DH.		MISSED APPROACH: Climb to 3000 on heading 330° and on BGR VORTAC R-333 to IKEXE/BGR VORTAC 11.9 DME/RADAR and hold.
	SA CAT II: Reduced lighting; requires specific OPSPEC, MSPEC, or LOA approval and use of Autoland or HUD to touchdown.		

ATIS 127.75	BANGOR APP CON 118.925 239.3	BANGOR TOWER 120.7 233.7	GND CON 121.9 348.6	CLNC DEL 135.9 348.6
-----------------------	--	------------------------------------	-------------------------------	--------------------------------



ELEV 192	D	TDZE 163
-----------------	----------	-----------------



CATEGORY	A	B	C	D
S-ILS 33	SA CAT I	RA 173/14	150 DA 313	
S-ILS 33	SA CAT II	RA 103/12	100 DA 263	

SA CATEGORY I & II ILS - SPECIAL AIRCREW & AIRCRAFT CERTIFICATION REQUIRED

NE-1, 14 MAY 2026 to 11 JUN 2026

NE-1, 14 MAY 2026 to 11 JUN 2026