

LOC/DME I-BTR 110.3 Chan 40	APP CRS 133°	Rwy Ldg 5720 TDZE 67 Apt Elev 70
---	------------------------	---

ILS or LOC RWY 13

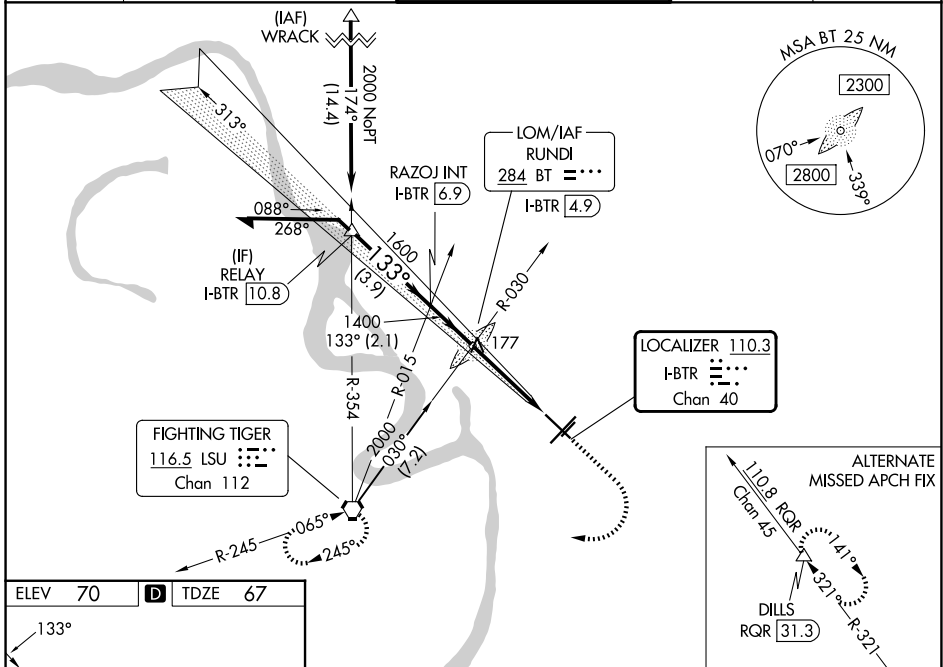
BATON ROUGE METRO, RYAN FLD (BTR)

⚠ For inop MALSRS when using Hammond altimeter setting, increase S-ILS 13 all Cats visibility to $\frac{3}{8}$ mile, and S-LOC 13 visibility to $\frac{1}{8}$ mile. VDP NA with Hammond altimeter setting. When local altimeter setting not received, use Hammond altimeter setting and increase all DA 91 feet and all MDA 100 feet, increase S-LOC 13 Cats C and D visibility $\frac{1}{4}$ mile, increase Circling Cats C and D visibility $\frac{1}{4}$ mile. For inop MALSRS, increase S-LOC 13 Cats C and D to $\frac{1}{2}$ mile.

MALSRS

MISSED APPROACH:
Climb to 700 then climbing right then to 2000 direct LSU VORTAC and hold.

ATIS 125.2	BATON ROUGE APP CON ★ 120.3 278.3	RYAN TOWER ★ 118.45 (CTAF) 257.8	GND CON 121.9	UNICOM 122.95
----------------------	---	--	-------------------------	-------------------------



ELEV 70	D	TDZE 67
---------	----------	---------

TDZ/CL Rwy 22R
HIRL Rwy 13-31 and 4L-22R
MIRL Rwy 4R-22L
FAF to MAP 3.7 NM

Knots	60	90	120	150	180
Min:Sec	3:42	2:28	1:51	1:29	1:14

Remain within 10 NM

RUNDI LOM/INT I-BTR 4.9

313°

2000

1600

1333

1400

1321

700

2000

LSU

*LOC only.

Use I-BTR DME when on the localizer course.

*I-BTR 2.2

I-BTR 1.1

2.1 NM

2.7 NM

1 NM

CATEGORY	A	B	C	D
S-ILS 13		267- $\frac{1}{2}$	200 (200- $\frac{1}{2}$)	
S-LOC 13	480- $\frac{1}{2}$	413 (500- $\frac{1}{2}$)	480- $\frac{3}{4}$	413 (500- $\frac{3}{4}$)
CIRCLING	560-1 490 (500-1)	660-1 590 (600-1)	780-2 710 (800-2)	840-2 $\frac{1}{2}$ 770 (800-2 $\frac{1}{2}$)

SC-4, 14 MAY 2026 to 11 JUN 2026

SC-4, 14 MAY 2026 to 11 JUN 2026