

WAAS CH 81825 W04A	APP CRS 043°	Rwy Ldg 7500 TDZE 69 Apt Elev 70
--	------------------------	---

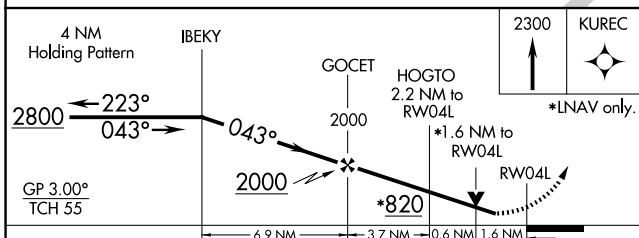
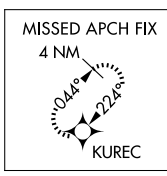
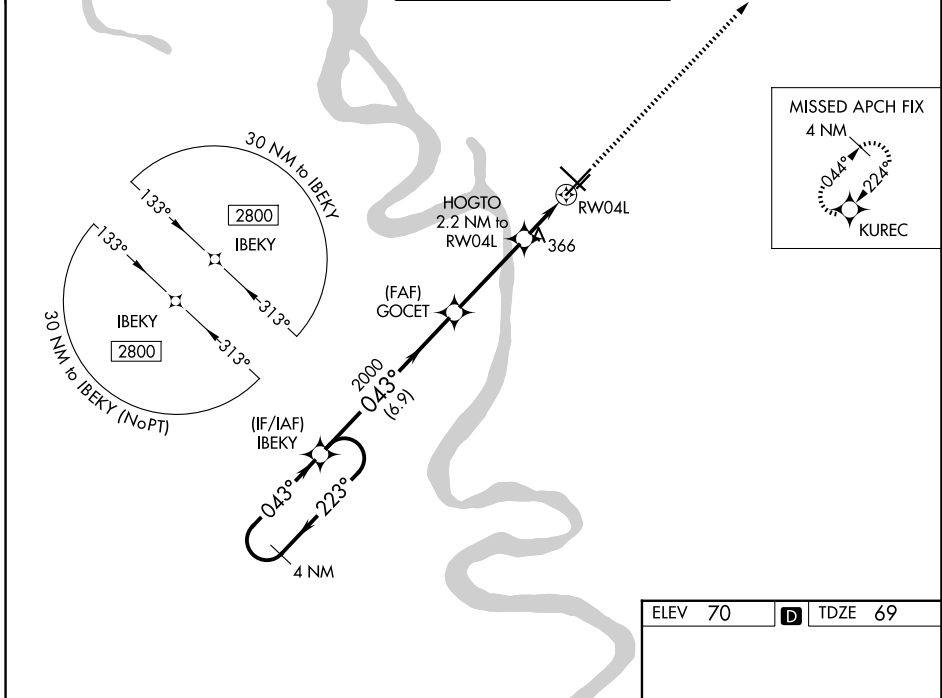
RNAV (GPS) RWY 4L

BATON ROUGE METRO, RYAN FLD (BTR)

⚠ For uncompensated Baro-VNAV systems, LNAV/VNAV NA below -5°C (23°F) or above 54°C (130°F).
⚠ DME/DME RNP-0.3 NA. Baro-VNAV and VDP NA when using Hammond altimeter setting. When local altimeter setting not received, use Hammond altimeter setting and increase all DA 91 feet and all MDA 100 feet; increase LPV visibility ¼ mile all Cats, LNAV/VNAV visibility ½ mile all Cats and LNAV Cat C/D visibility ¼ mile, Circling Cat C/D visibility ¼ mile. Helicopter visibility reduction below ¾ SM NA.

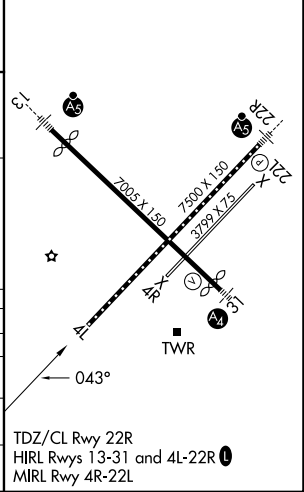
MISSED APPROACH:
Climb to 2300 direct KUREC and hold.

ATIS 125.2	BATON ROUGE APP CON ★ 120.3 278.3	RYAN TOWER ★ 118.45 (CTAF) 0 257.8	GND CON 121.9	UNICOM 122.95
----------------------	---	--	-------------------------	-------------------------



ELEV 70	D	TDZE 69
---------	---	---------

CATEGORY	A	B	C	D
LPV DA	345-7/8		276 (300-7/8)	
LNAV/VNAV DA	656-2		587 (600-2)	
LNAV MDA	620-1 551 (600-1)		620-15/8 551 (600-15/8)	
CIRCLING	620-1 550 (600-1)	660-1 590 (600-1)	780-2 710 (800-2)	840-2 1/2 770 (800-2 1/2)



SC-4, 14 MAY 2026 to 11 JUN 2026

SC-4, 14 MAY 2026 to 11 JUN 2026