

(KLSHN2.KLSHN) 25163

KLSHN TWO DEPARTURE (RNAV)

AL-45 (FAA)

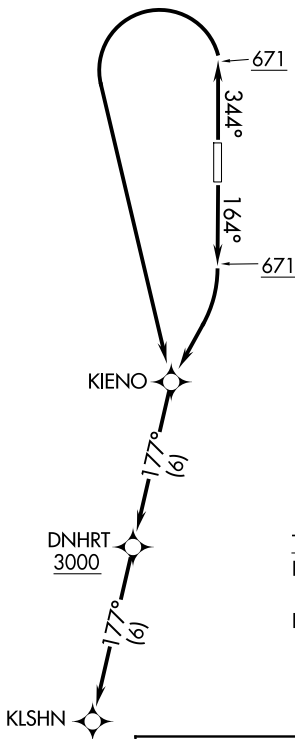
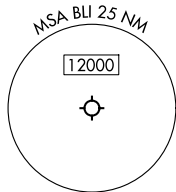
BELLINGHAM INTL (BLI)
BELLINGHAM, WASHINGTON

**TOP ALTITUDE:
ASSIGNED BY ATC**

RNAV 1 - DME/DME/IRU or GPS.

RADAR required.

VICTORIA TERMINAL DEP CON
132.7
ATIS
134.45
GND CON
127.4 379.3
BELLINGHAM TOWER*
124.9 379.3



TAKEOFF MINIMUMS

Rwy 16: Standard with minimum climb of 250'/NM to 2300.
Rwy 34: Standard with minimum climb of 220'/NM to 2500.

NOTE: Chart not to scale.

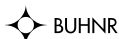
DEPARTURE ROUTE DESCRIPTION

TAKEOFF RUNWAY 16: Climb on heading 164° to 671, then right turn direct KIENO, then on track 177° to cross DNHRT at or above 3000, thence. . . .

TAKEOFF RUNWAY 34: Climb on heading 344° to 671, then left turn direct KIENO, then on track 177° to cross DNHRT at or above 3000, thence. . . .

. . . .on track 177° to KLSHN. Maintain ATC assigned altitude. Expect filed altitude within 5 minutes after departure.

LOST COMMUNICATIONS: If no transmissions are received for 2 minutes after departure, proceed direct DNHRT, then on last routing cleared.



KLSHN TWO DEPARTURE (RNAV)

(KLSHN2.KLSHN) 17APR25

BELLINGHAM, WASHINGTON
BELLINGHAM INTL (BLI)

NW-1, 14 MAY 2026 to 11 JUN 2026

NW-1, 14 MAY 2026 to 11 JUN 2026