

APP CRS	Rwy Ldg	6700
164°	TDZE	163
	Apt Elev	171

RNAV (RNP) Z RWY 16

BELLINGHAM INTL (BLI)

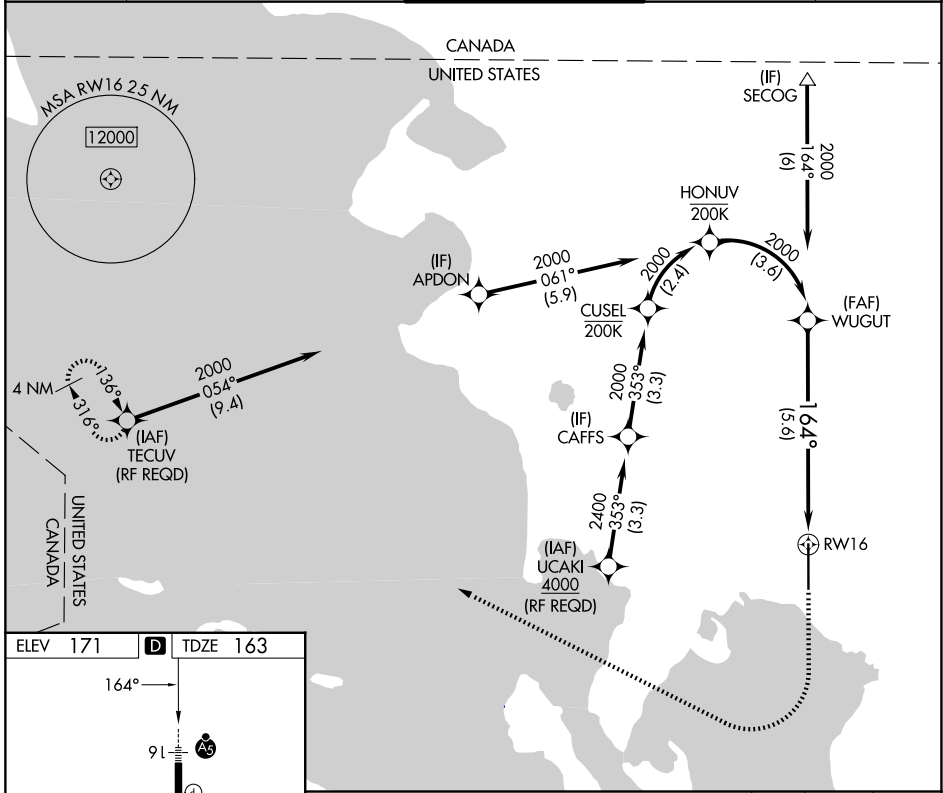
RNP AR APCH - GPS. Authorization required. From CUSUL, HONUUV: RF.

For uncompensated Baro-VNAV systems, procedure NA below -10°C or above 54°C.

MAJSR

MISSED APPROACH: Climb to 700 then climbing right turn to 2000 direct TECUV and hold.

ATIS 134.45	VICTORIA TERMINAL APP CON 132.7	BELLINGHAM TOWER★ 124.9 (CTAF) 0 379.3	GND CON 127.4 379.3	UNICOM 122.95
-----------------------	---	--	-------------------------------	-------------------------



NW-1, 14 MAY 2026 to 11 JUN 2026

NW-1, 14 MAY 2026 to 11 JUN 2026

