

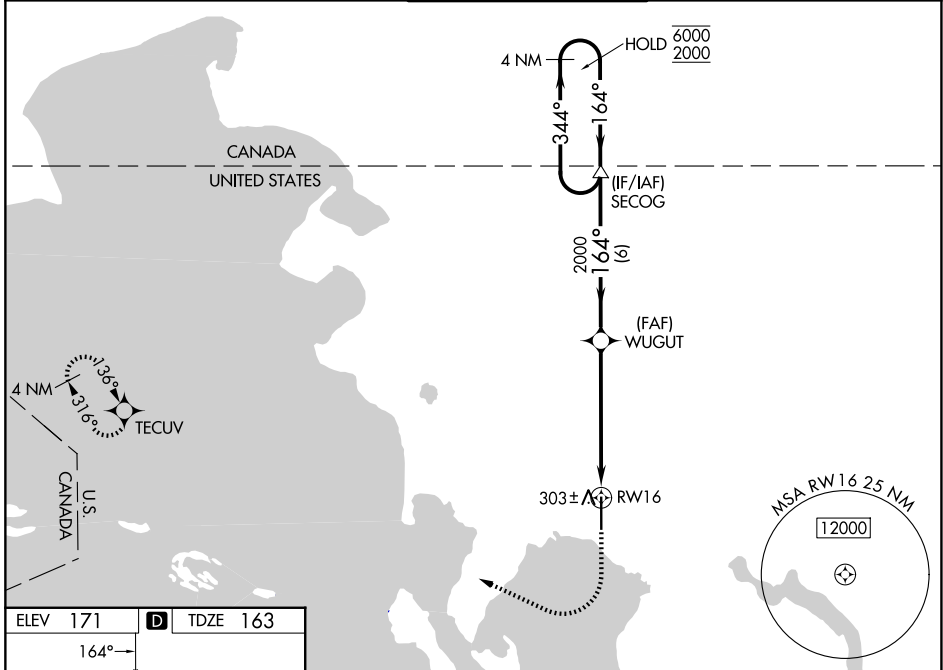
WAAS CH 45999	APP CRS 164°	Rwy Ldg TDZE 163	6700
W16A		Apt Elev 171	

RNAV (GPS) Y RWY 16

BELLINGHAM INTL (BLI)

RNP APCH - GPS.		MALSR	MISSED APPROACH: Climb to 700 then climbing right turn to 2000 direct TECUV and hold.
⚠ For uncompensated Baro-VNAV systems, LNAV/VNAV NA below -10°C or above 54°C. *RVR 1800 authorized with use of FD or AP or HUD to DA.			

ATIS 134.45	VICTORIA TERMINAL APP CON 132.7	BELLINGHAM TOWER★ 124.9 (CTAF) 0 379.3	GND CON 127.4 379.3	UNICOM 122.95
-----------------------	---	--	-------------------------------	-------------------------



NW-1, 14 MAY 2026 to 11 JUN 2026

NW-1, 14 MAY 2026 to 11 JUN 2026

ELEV 171	D	TDZE 163
----------	----------	----------

REIL Rwy 34 **0**
HIRL Rwy 16-34 **0**

	4 NM Holding Pattern	SECOG	WUGUT	700	2000	TECUV
	6000 ← 344°	164° →	2000	↑	↷	⬠
	2000	GP 3.00°	2000			
		TCH 51				
		6 NM	4.5 NM	1.1 NM to RWY 16		
CATEGORY	A	B	C	D		
LPV DA*	363/24		200 (200-½)			
LNAV/VNAV DA	486/26		323 (400-½)			
LNAV MDA	560/24	397 (400-½)	560/35	397 (400-¾)		
CIRCLING	640-1	469 (500-1)	860-2 689 (700-2)	1140-3 969 (1000-3)		