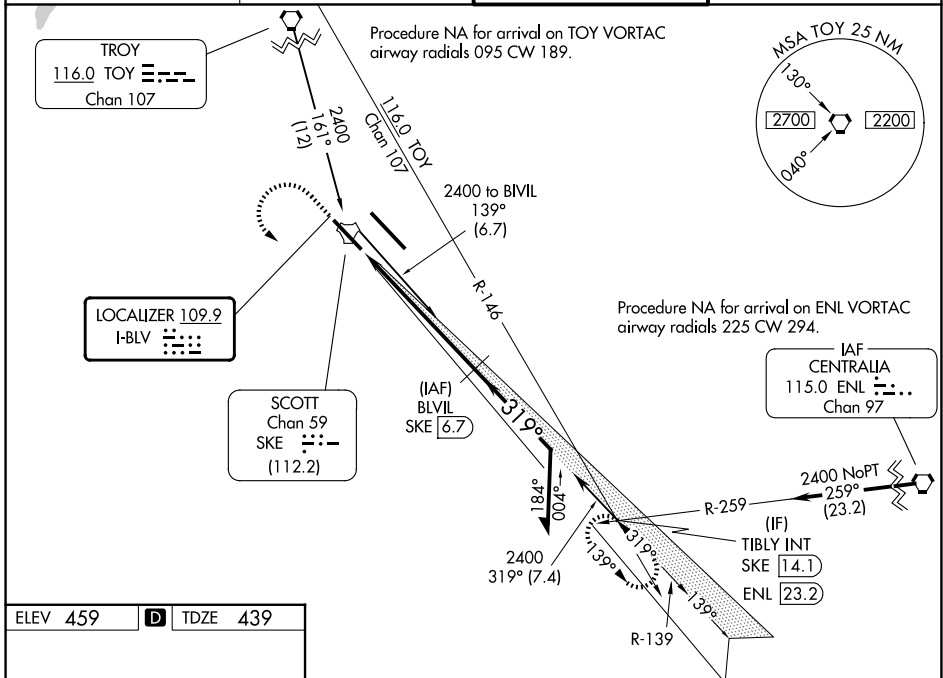


LOC I-BLV 109.9	APP CRS 319°	Rwy Ldg 7822
		TDZE 439
		Apt Elev 459

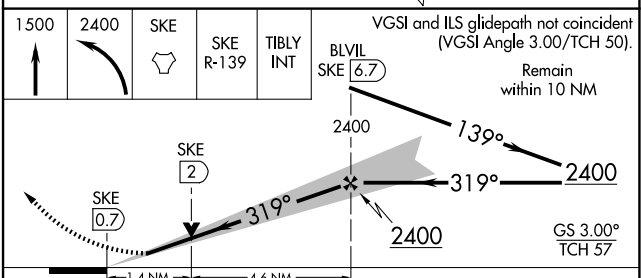
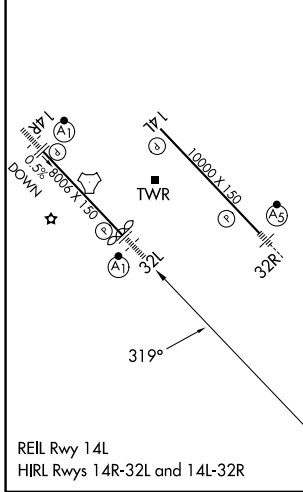
ILS or LOC RWY 32L

SCOTT AFB/MIDAMERICA ST LOUIS (BLV)

DME required.		ALSF-1 	MISSED APPROACH: Climb to 1500 then climbing left turn to 2400 direct SKE TACAN and on SKE R-139 to TIBLY INT/ SKE 14.1 DME and hold.
For inop ALS, increase S-ILS 32L Cat E visibility to RVR 4000 and increase S-LOC 32L Cat C/D/E visibility to 1/2 SM. Procedure turn NA for Cat E aircraft. DME from SKE TACAN. Simultaneous reception of I-BLV and SKE DME required. *RVR 1800 authorized with use of FD or AP or HUD to DA.			
ATIS 128.7 256.7	ST LOUIS APP CON 125.2 281.5	SCOTT TOWER 128.25 253.5	GND CON 119.2 275.8



ELEV 459	D	TDZE 439
----------	----------	----------



CATEGORY	A	B	C	D	E
S-ILS 32L*	639/24 200 (200-1/2)				
S-LOC 32L	920/24	481 (500-1/2)	920/50 481 (500-1)		
CIRCLING	1000-1	1120-1	1240-2 1/4	1240-2 1/2	1240-2 3/4
	541 (600-1)	661 (700-1)	781 (800-2 1/4)	781 (800-2 1/2)	781 (800-2 3/4)

EC-3, 14 MAY 2026 to 11 JUN 2026

EC-3, 14 MAY 2026 to 11 JUN 2026