

APP CRS	Rwy Ldg	<b>10000</b>
<b>139°</b>	TDZE	<b>442</b>
	Apt Elev	<b>459</b>

# RNAV (RNP) Z RWY 14L

SCOTT AFB/MIDAMERICA ST LOUIS (BLV)

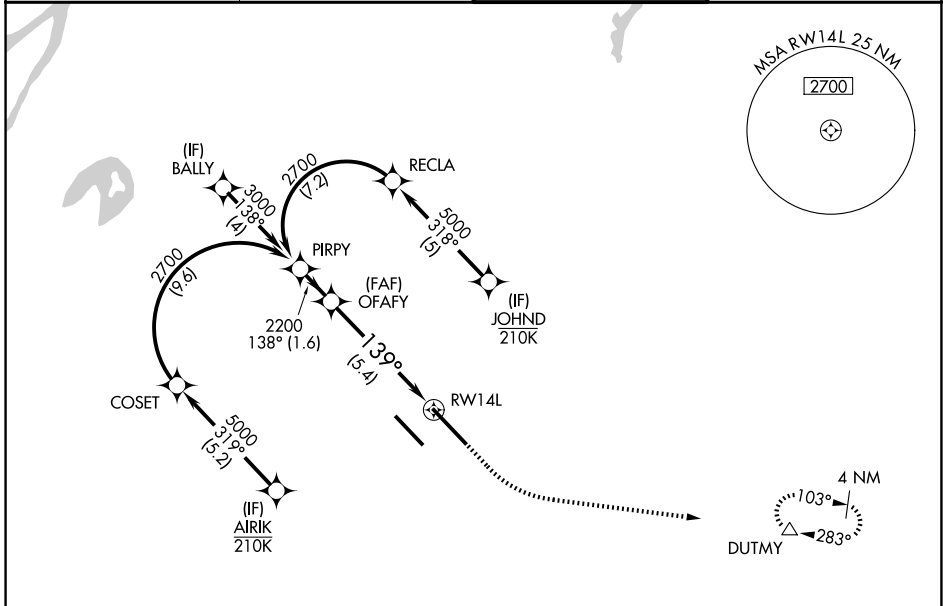
RNP AR APCH - GPS. Authorization required. From RECLA, COSET: RF.

**▼** For uncompensated Baro-VNAV systems, procedure NA below -15°C or above 54°C. For inop ALS, increase RNP 0.15 all Cats visibility to RVR 5000.

**▲ NA ASR**

**MISSED APPROACH:** Climb to 2000 then climbing left turn to 3000 direct DUTMY and hold.

ATIS <b>128.7 256.7</b>	ST LOUIS APP CON <b>125.2 281.5</b>	SCOTT TOWER <b>128.25 253.5</b>	GND CON <b>119.2 275.8</b>
----------------------------	--	------------------------------------	-------------------------------



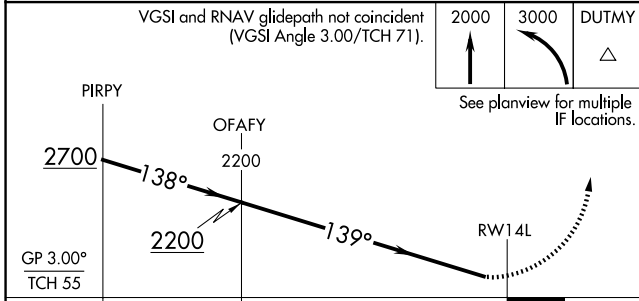
EC-3, 14 MAY 2026 to 11 JUN 2026

EC-3, 14 MAY 2026 to 11 JUN 2026

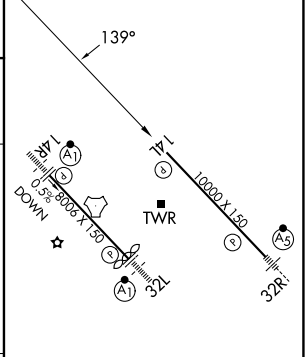
VGSI and RNAV glidepath not coincident (VGSI Angle 3.00/TCH 71).

2000	3000	DUTMY
↑	↶	△

See planview for multiple IF locations.



ELEV 459	<b>D</b>	TDZE 442
----------	----------	----------



CATEGORY	A	B	C	D
RNP 0.15 DA		773/40	331 (400-¾)	
RNP 0.30 DA		867/40	425 (500-¾)	

**AUTHORIZATION REQUIRED**

REIL Rwy 14L  
HIRL Rwys 14R-32L and 14L-32R