

APP CRS 319°	Rwy Ldg 7822
	TDZE 439
	Apt Elev 459

RNAV (RNP) Z RWY 32L


SCOTT AFB/MIDAMERICA ST LOUIS (BLV)

RNP AR APCH - GPS. Authorization required. From JBELL, PARLY: RF

▼ For uncompensated Baro-VNAV systems, procedure NA below -15°C or above 54°C

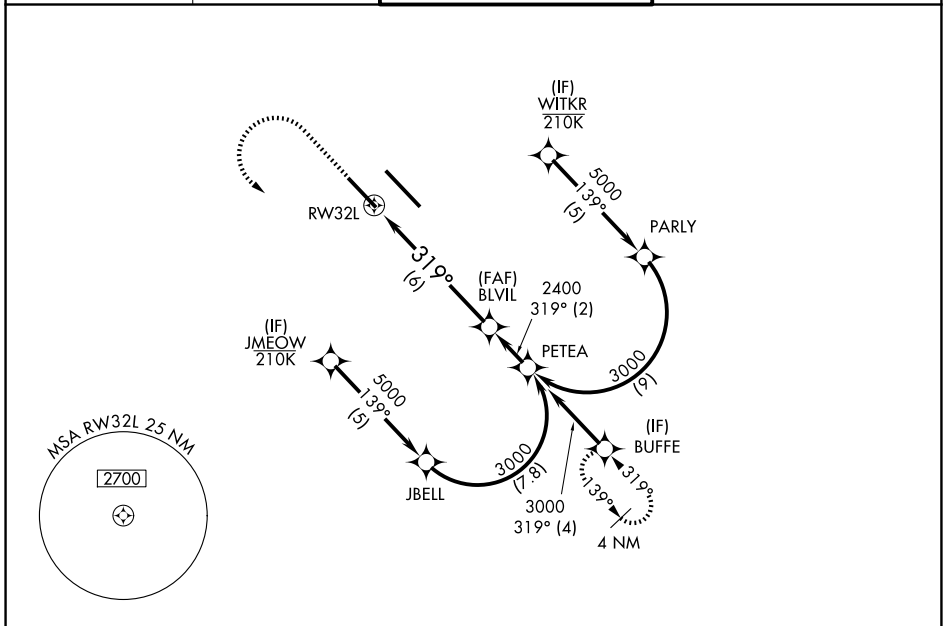
▲ NA For inop ALS, increase RNP 0.15 all Cats visibility to RVR 4500.

ASR For inop ALS, increase RNP 0.30 all Cats visibility to RVR 5500.

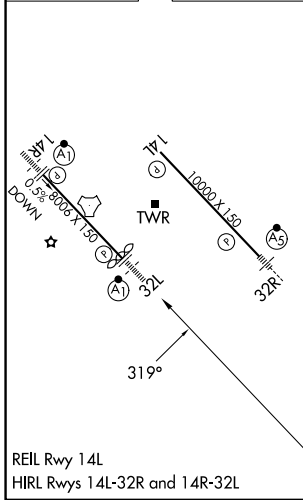
ALSF-1 

MISSED APPROACH: Climb to 1500 then climbing left turn to 3000 direct BUFFE and hold.

ATIS 128.7 256.7	ST LOUIS APP CON 125.2 281.5	SCOTT TOWER 128.25 253.5	GND CON 119.2 275.8
----------------------------	--	------------------------------------	-------------------------------



ELEV 459	D	TDZE 439
----------	----------	----------



1500	3000	BUFFE	VGSI and RNAV glidepath not coincident. (VGSI Angle 3.00/TCH 50)
See planview for multiple IF locations.			
RWY 32L	BLVIL 2400	PETEA 3000	GP 3.00° TCH 57
6 NM		2 NM	
CATEGORY	A	B	C
RNP 0.15 DA	743/24		304 (300-1/2)
RNP 0.30 DA	802/35		363 (400-5/8)
AUTHORIZATION REQUIRED			

REIL Rwy 14L
HIRL Rwy 14L-32R and 14R-32L

EC-3, 14 MAY 2026 to 11 JUN 2026

EC-3, 14 MAY 2026 to 11 JUN 2026