

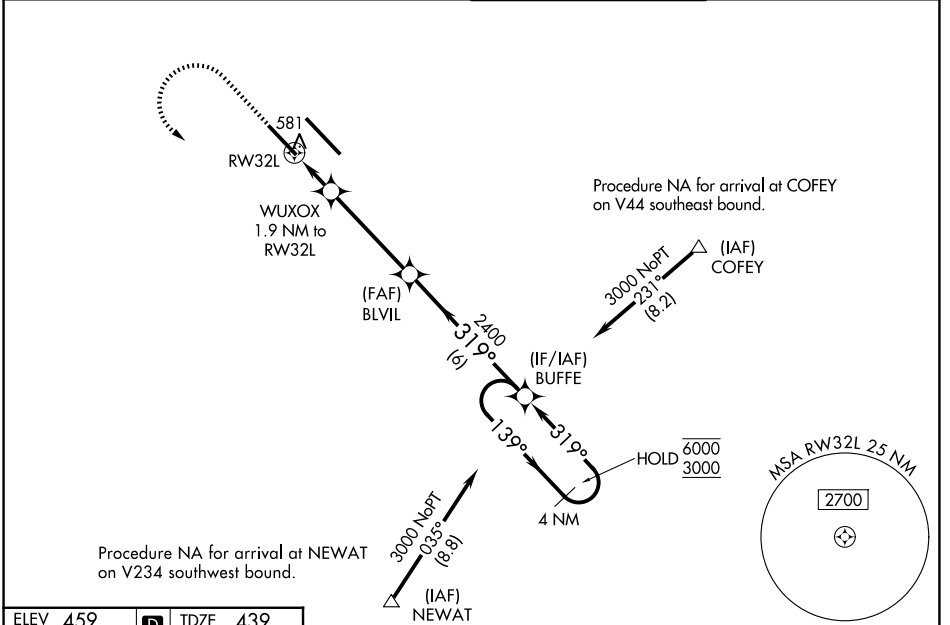
WAAS CH 65947 W32B	APP CRS 319°	Rwy Ldg TDZE Apt Elev	7822 439 459
--	------------------------	-----------------------------	---

RNAV (GPS) Y RWY 32L

SCOTT AFB/MIDAMERICA ST LOUIS (BLV)

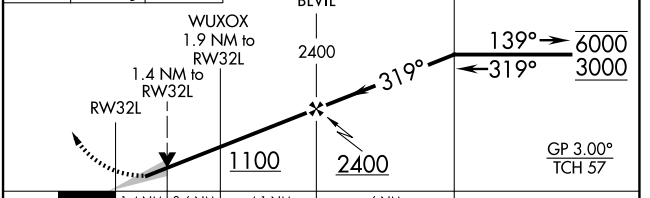
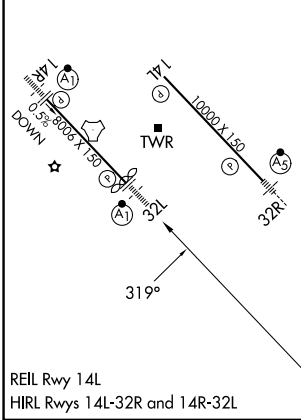
RNP APCH-GPS.	ALSF-1	MISSED APPROACH: Climb to 1500 then climbing left turn to 3000 direct BUFFE and hold.
<p>Simultaneous approach authorized. For uncompensated Baro-VNAV systems, LNAV/VNAV NA below -15°C or above 54°C. For inop ALS, increase LNAV/VNAV all Cats visibility to 5500 RVR, and LNAV Cat C/D visibility to 1 3/8 mile. * RVR 1800 authorized with use of FD or AP or HUD to DA.</p>		

ATIS 128.7 256.7	ST LOUIS APP CON 125.2 281.5	SCOTT TOWER 128.25 253.5	GND CON 119.2 275.8
----------------------------	--	------------------------------------	-------------------------------



ELEV 459	D	TDZE 439
----------	----------	----------

1500	3000	BUFFE	VGSI and descent angles not coincident (VGSI Angle 3.00/TCH 50).
			4 NM Holding Pattern



CATEGORY	A	B	C	D
LPV DA*	639/24		200 (200-1/2)	
LNAV/VNAV DA	812/35		373 (400-5/8)	
LNAV MDA	920/24	481 (500-1/2)	920/50	481 (500-1)
CIRCLING	1000-1 541 (600-1)	1120-1 661 (700-1)	1240-2 1/4 781 (800-2 1/4)	1240-2 1/2 781 (800-2 1/2)

EC-3, 14 MAY 2026 to 11 JUN 2026

EC-3, 14 MAY 2026 to 11 JUN 2026