

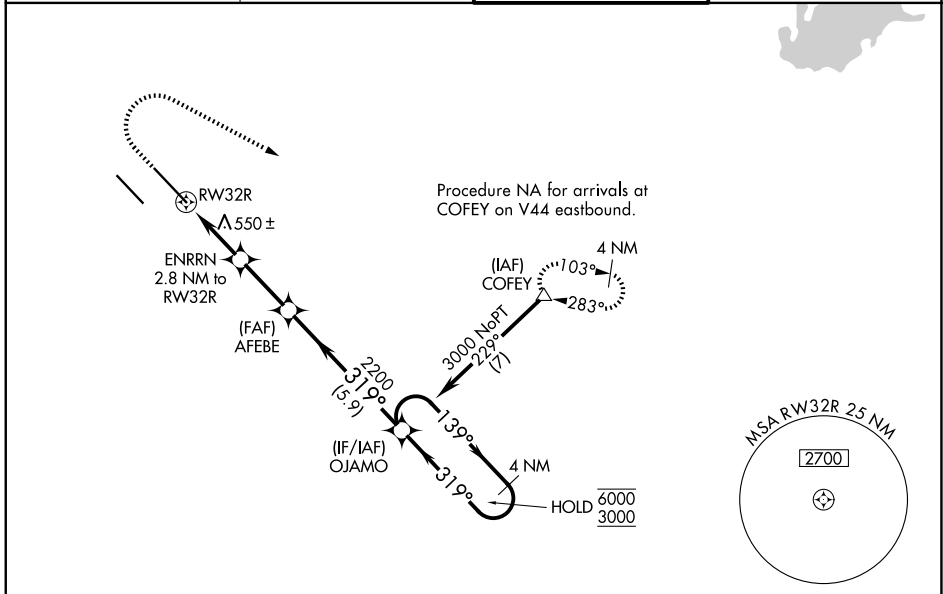
WAAS CH 50518 W32A	APP CRS 319°	Rwy Ldg 10000 TDZE 442 Apt Elev 459
--	------------------------	--

RNAV (GPS) Y RWY 32R

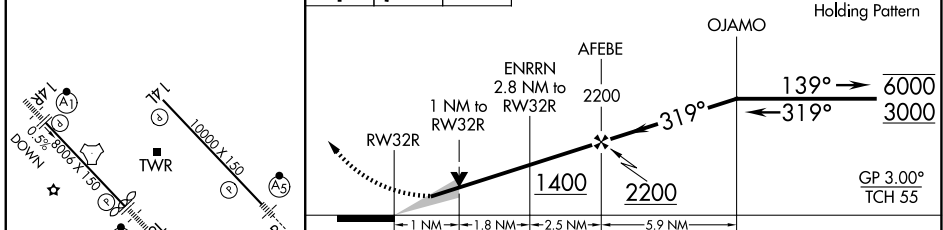
SCOTT AFB/MIDAMERICA ST LOUIS (BLV)

RNP APCH - GPS.		MALSR	MISSED APPROACH: Climb to 1500 then climbing right turn to 3000 direct COFEY and hold.
For uncompensated Baro-VNAV systems, LNAV/VNAV NA below -15°C or above 54°C. Simultaneous approach authorized. ASR *RVR 1800 authorized with use of FD or AP or HUD to DA.			

ATIS 128.7 256.7	ST LOUIS APP CON 125.2 281.5	SCOTT TOWER 128.25 253.5	GND CON 119.2 275.8
----------------------------	--	------------------------------------	-------------------------------



ELEV 459	D TDZE 442	1500	3000	COFEY	VGSI and RNAV glidepath not coincident (VGSI Angle 3.00/TCH 71).
----------	-------------------	------	------	-------	--



CATEGORY	A	B	C	D
LPV DA*	642/24 200 (200-½)			
LNAV/VNAV DA	830/35 388 (400-⅔)			
LNAV MDA	840/24	398 (400-½)	840/35	398 (400-⅔)
CIRCLING	1000-1 541 (600-1)	1120-1 661 (700-1)	1240-2¼ 781 (800-2¼)	1240-2½ 781 (800-2½)

REIL Rwy 14L
HIRL Rwy 14R-32L and 14L-32R

EC-3, 14 MAY 2026 to 11 JUN 2026

EC-3, 14 MAY 2026 to 11 JUN 2026