

APP CRS	Rwy Ldg	10518
282°	TDZE	3517
	Apt Elev	3662

RNAV (RNP) Z RWY 28R

BILLINGS LOGAN INTL (BIL)

RNP AR APCH-GPS

▼ For uncompensated Baro-VNAV systems, procedure NA below -24°C or above 50°C.

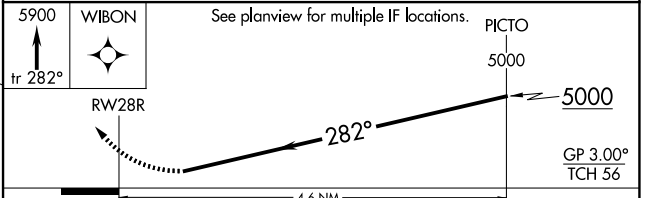
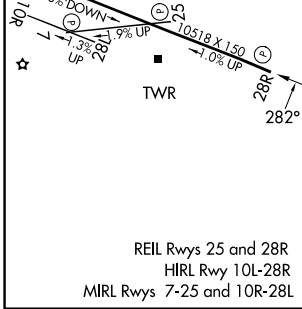
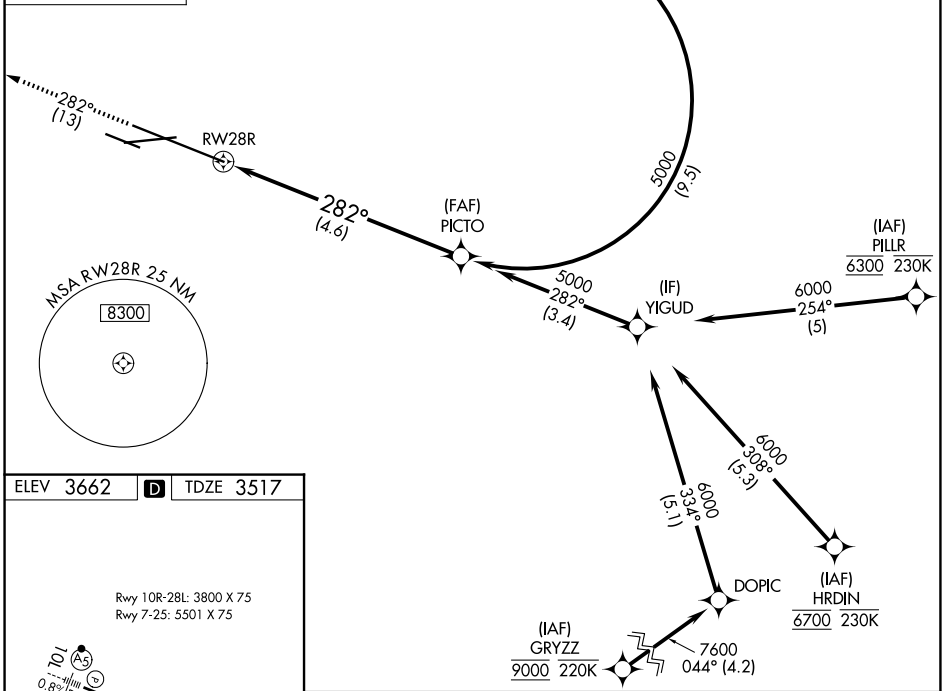
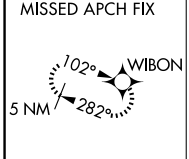
MISSED APPROACH: Climb to 5900 on track 282° to WIBON and hold.

ATIS
126.3

BILLINGS APP CON
120.5 284.6

BILLINGS TOWER
127.2 257.8

GND CON
121.9



CATEGORY	A	B	C	D
RNP 0.30 DA	3903-1¼		386 (300-1¼)	

AUTHORIZATION REQUIRED

NW-1, 14 MAY 2026 to 11 JUN 2026

NW-1, 14 MAY 2026 to 11 JUN 2026