

BILOXI, MISSISSIPPI

ILS or LOC RWY 22

LOC I-BIX 109.7	APCH CRS 217°	Rwy ldg THRE Arprt Elev 6630 17 33
---------------------------	-------------------------	--

[USAF]

KEESLER AFB (KBIX)

RADAR or DME required

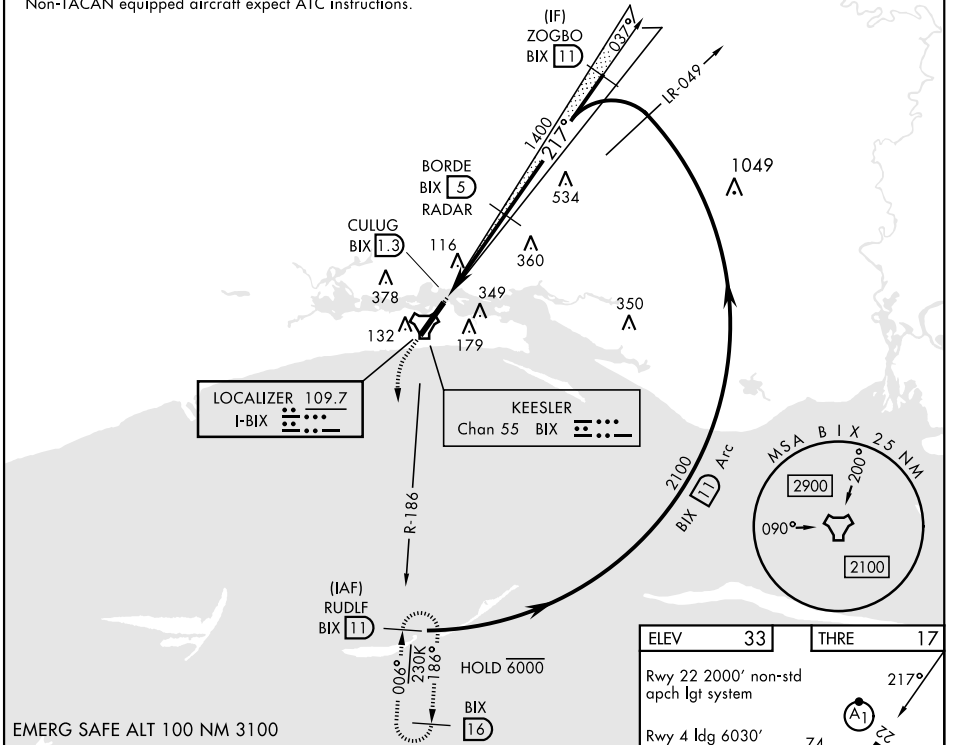
ALS-1  MISSED APPROACH: Climb to 800 tracking 217°, upon reaching 800 turn left to intercept BIX TACAN R-186 climbing to 2200 to 11 DME (RUDLF) and hold.

▼ *When ALS inop, increase CAT AB RVR to 55, vis to 1 mile, CAT CD vis to 1 1/2 miles.

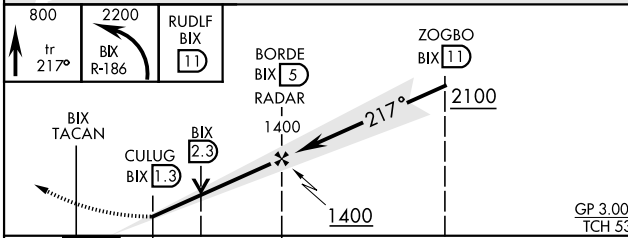
ATIS ★ 281.55	GULFPORT APP CON ★ 124.6 354.1 (130°- 309°) 127.5 254.25 (310°- 129°)	TOWER ★ 120.75 269.075	GND CON ★ 121.8 275.8	CLNC DEL 121.8 275.8
-------------------------	---	----------------------------------	---------------------------------	--------------------------------

• 272

† Missed approach requires use of RNAV or ATC RADAR monitoring.
Non-TACAN equipped aircraft expect ATC instructions.



EMERG SAFE ALT 100 NM 3100



ELEV	33	THRE	17		
Rwy 22 2000' non-std apch lgt system					
Rwy 4 ldg 6030'					
Rwy 22 ldg 6630'					
HIRL Rwy 4-22					
REIL Rwy 4					
175	74	45	195		
74	150	74	195		
195	195	195	195		
GP 3.00° TCH 53					
TWR 195					
195					
FAF to MAP 3.7 NM					
Knots	60	90	120	150	180
Min:Sec	3:42	2:28	1:51	1:29	1:14

BILOXI, MISSISSIPPI

30° 25' N-88° 55' W

KEESLER AFB (KBIX)

Amtd 2 03NOV22

ILS or LOC RWY 22

SC-4, 14 MAY 2026 to 11 JUN 2026

SC-4, 14 MAY 2026 to 11 JUN 2026