

# TACAN RWY 22

TACAN BIX Chan <b>55</b>	APCH CRS <b>222°</b>	Rwy ldg THRE Arprt Elev <b>6630</b> <b>17</b> <b>33</b>
-----------------------------	-------------------------	--

[USAF]

KEESLER AFB (KBIX)

▼ \* When ALS inop, increase CAT AB RVR to 55, vis to 1 mile; CAT CD vis to 1¼ miles.

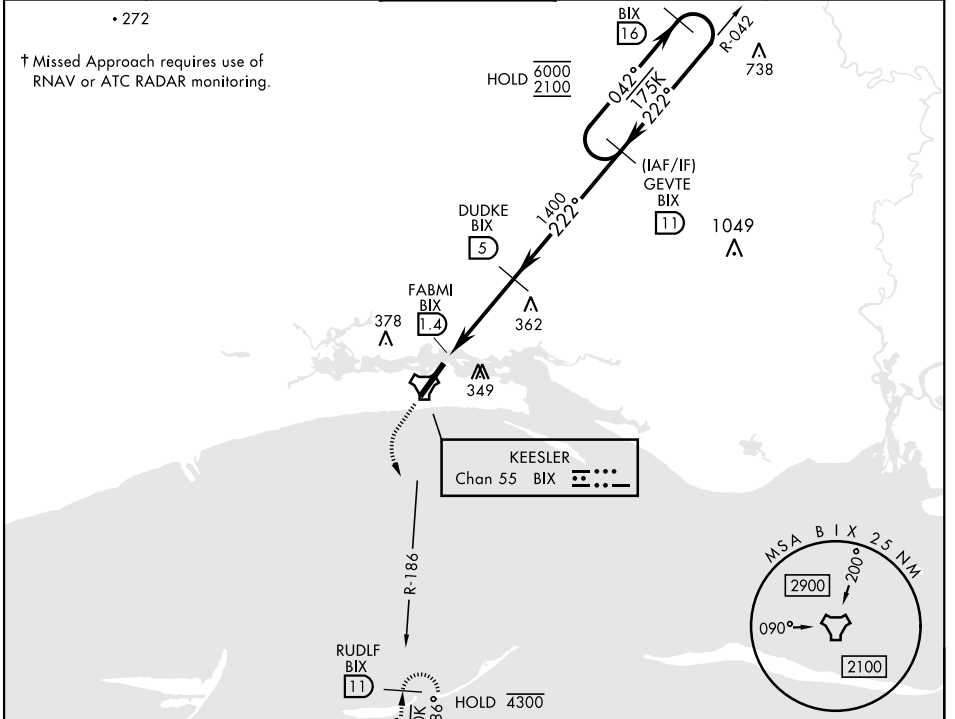
ALSF-1 

† MISSED APPROACH: Climb to 800 tracking 215°, then turn left to intercept BIX R-186 to 11 DME (RUDLF) climbing to 2200 and hold.

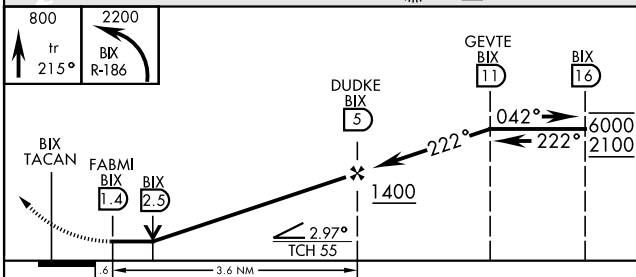
ATIS★ <b>281.55</b>	GULFPORT APP CON★ <b>124.6 354.1</b> (130°-309°) <b>127.5 254.25</b> (310°-129°)	TOWER★ <b>120.75 269.075</b>	GND CON★ <b>121.8 275.8</b>	CLNC DEL <b>121.8 275.8</b>
------------------------	--	---------------------------------	--------------------------------	--------------------------------

• 272

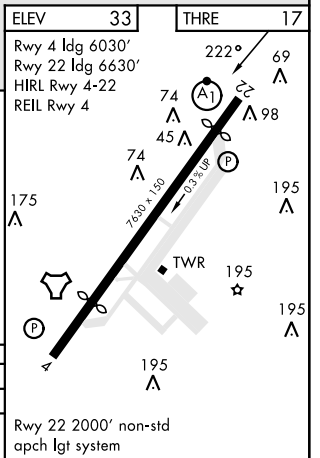
† Missed Approach requires use of RNAV or ATC RADAR monitoring.



EMERG SAFE ALT 100 NM 3100



CATEGORY	A	B	C	D
S-22*	620/40 603 (600-¾)	660-1	680-1½	603 (600-1½)
CIRCLING	620-1 587 (600-1)	660-1 627 (700-1)	680-1¾ 647 (700-1¾)	680-2 647 (700-2)



# TACAN RWY 22

SC-4, 14 MAY 2026 to 11 JUN 2026

SC-4, 14 MAY 2026 to 11 JUN 2026