

TACAN RWY 4

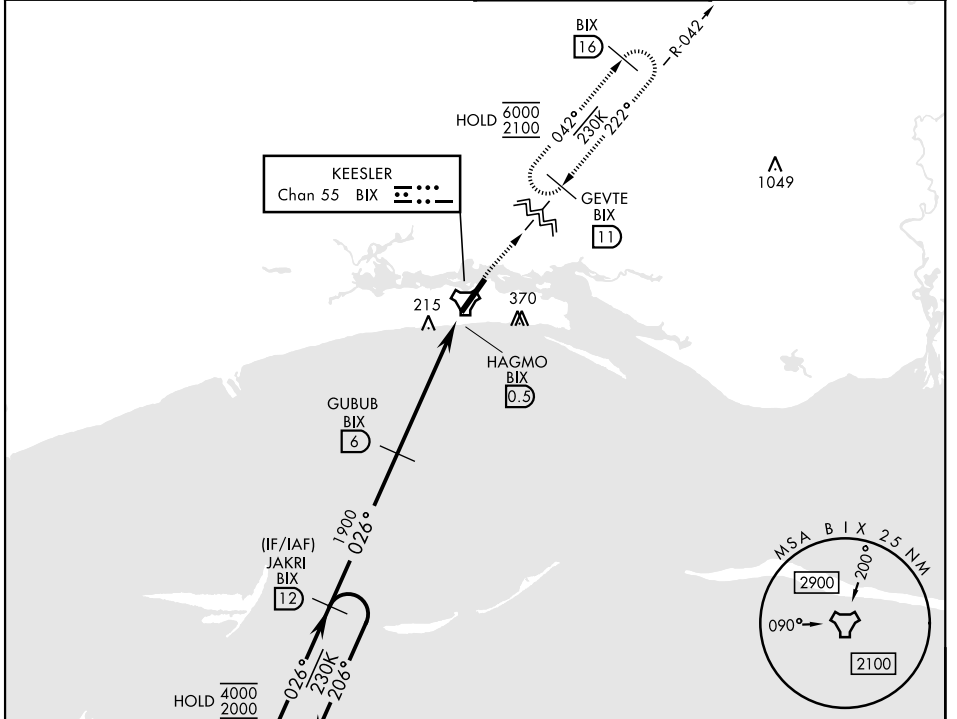
TACAN BIX Chan 55	APCH CRS 026°	Rwy Idg TDZE Arprt Elev 6030 23 33
-----------------------------	-------------------------	--

[USAF]

KEESLER AFB (KBIX)

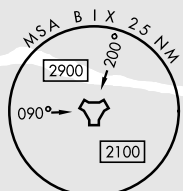
Visibility reduction by helicopters NA. MISSED APPROACH: Climbing right turn to 2100 direct GEVTE/BIX 11 DME and hold. Missed approach requires use of RNAV or ATC RADAR monitoring.

ATIS★ 281.55	GULFPORT APP CON★ 124.6 354.1 (130° - 30°) 127.5 254.25 (310° - 129°)	KEESLER TOWER★ 120.75 269.075	GND CON★ 121.8 275.8
------------------------	---	---	--------------------------------



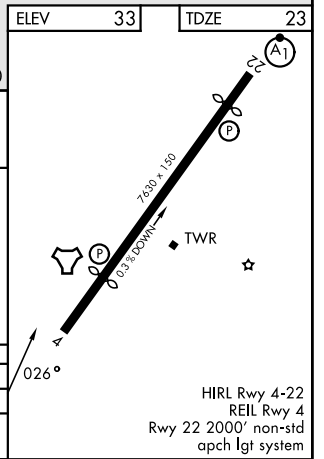
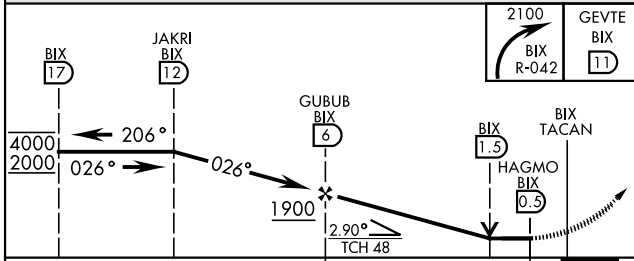
A 1049

KEESLER
Chan 55 BIX



ELEV	33	TDZE	23
------	----	------	----

EMERG SAFE ALT 100 NM 3100



CATEGORY	A	B	C	D
S-4	520/55 497 (500-1)		520-1 3/8 497 (500-1 3/8)	
CIRCLING	580-1 547 (600-1)	660-1 627 (700-1)	680-1 3/4 647 (700-1 3/4)	680-2 647 (700-2)

HIRL Rwy 4-22
REIL Rwy 4
Rwy 22 2000' non-std
apch lgt system

TACAN RWY 4

SC-4, 14 MAY 2026 to 11 JUN 2026

SC-4, 14 MAY 2026 to 11 JUN 2026