

BILOXI, MISSISSIPPI

TACAN-B

VORTAC GPT <b>109.0</b> Chan <b>27</b>	APCH CRS <b>266°</b>	Rwy ldg TDZE Arpt Elev <b>N/A</b> <b>33</b>
--	-------------------------	--

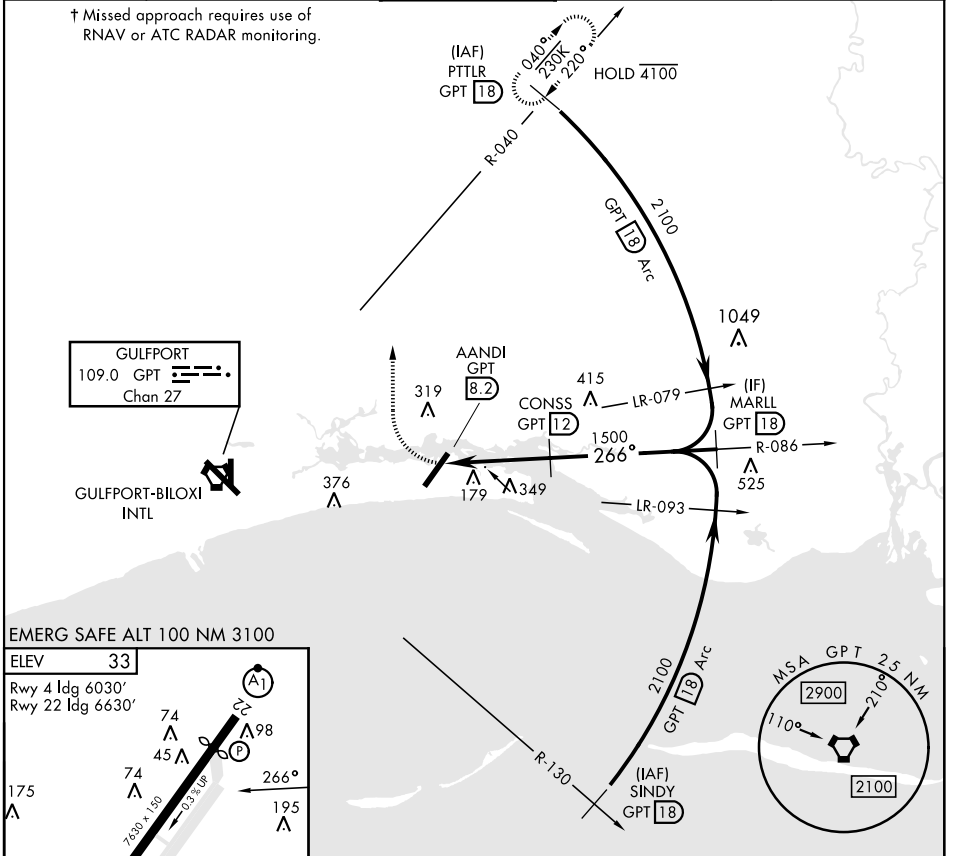
[USAF]

KEESLER AFB (KBIX)

† MISSED APPROACH: Climbing right turn to 2300 inctcp GPT VORTAC R-040 to PTTLR (R-040/18 DME) and hold.

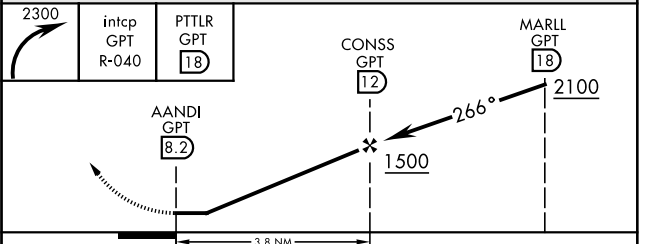
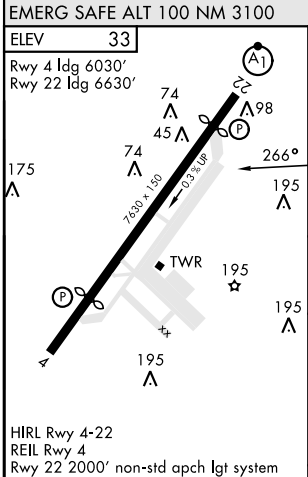
ATIS★ <b>281.55</b>	GULFPORT APP CON★ <b>124.6 354.1</b> (130°-309°) <b>127.5 254.25</b> (310°-129°)	TOWER★ <b>120.75 269.075</b>	GND CON★ <b>121.8 275.8</b>	CLNC DEL <b>121.8 275.8</b>
------------------------	--	---------------------------------	--------------------------------	--------------------------------

† Missed approach requires use of RNAV or ATC RADAR monitoring.



GULFPORT  
109.0 GPT  
Chan 27

GULFPORT-BILOXI  
INTL



FAF to MAP 3.8 NM					CATEGORY	A	B	C	D
Knots	60	90	120	150	180	620-1	660-1	680-1¾	680-2
Min:Sec	3:48	2:32	1:54	1:31	1:16	587 (600-1)	627 (700-1)	647 (700-1¾)	647 (700-2)

BILOXI, MISSISSIPPI

30° 25' N-88° 55' W

KEESLER AFB (KBIX)

Amdt 3 03NOV22

TACAN-B

SC-4, 14 MAY 2026 to 11 JUN 2026

SC-4, 14 MAY 2026 to 11 JUN 2026