

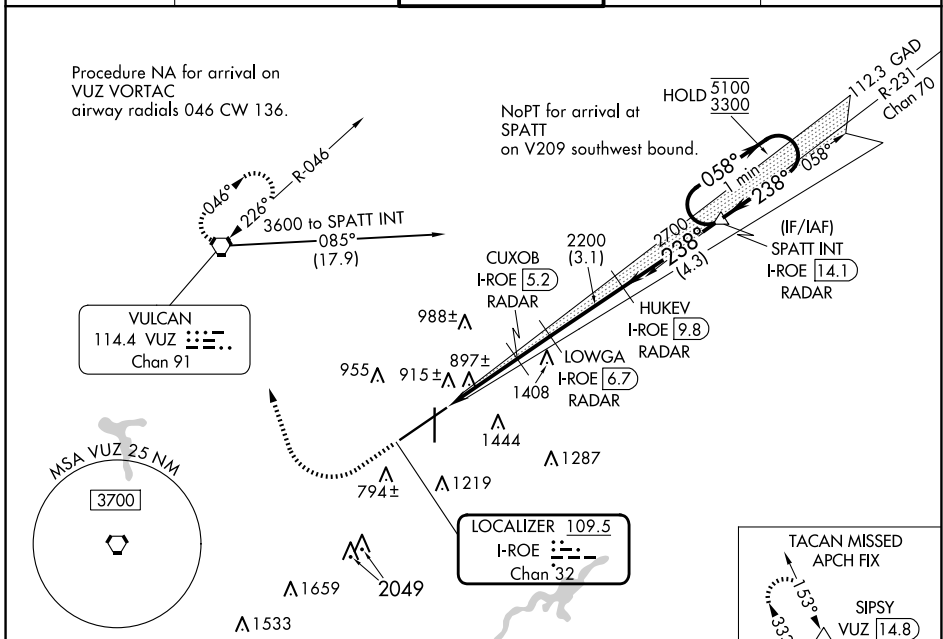
LOC/DME I-ROE 109.5 Chan 32	APP CRS 238°	Rwy Idg 10801 TDZE 641 Apt Elev 650
---	------------------------	--

ILS or LOC RWY 24

BIRMINGHAM-SHUTTLESWORTH INTL (BHM)

DME or RADAR required.	MALSR 	MISSED APPROACH: Climb to 1300 then climbing right turn to 3000 direct VUZ VORTAC and hold. (TACAN aircraft continue on VUZ VORTAC R-333 to SIPSY/VUZ 14.8 DME and hold NW, right turn, 153° inbound).
<p>▼ Rwy 24 helicopter visibility reduction below RVR 4000 NA. For inop ALS, increase S-ILS 24 Cat E visibility to RVR 4000 and increase S-LOC 24 Cat A/B visibility to RVR 5500, and Cat C/D/E to 1 1/2 SM. **RVR 1800 authorized with use of FD or AP or HUD to DA.</p>		

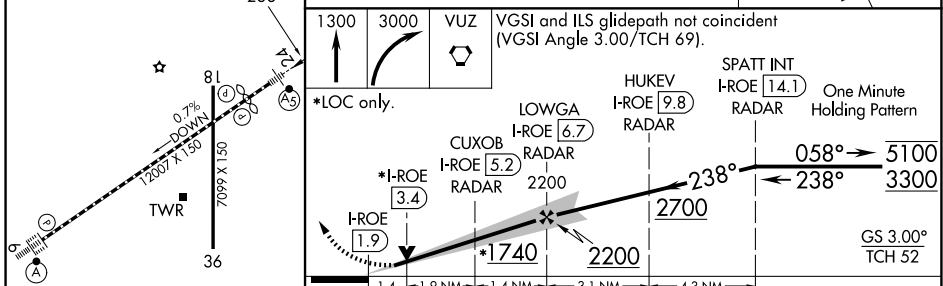
ATIS 119.4 270.1	BIRMINGHAM APP CON 123.8 256.8	BIRMINGHAM TOWER 119.9 317.725	GND CON 121.7 348.6	CLNC DEL 125.675 305.2
----------------------------	--	--	-------------------------------	----------------------------------



SE-4, 14 MAY 2026 to 11 JUN 2026

SE-4, 14 MAY 2026 to 11 JUN 2026

ELEV 650	D	TDZE 641	1541	1676
-----------------	----------	-----------------	------	------



REIL Rws 18 and 36 TDZ/CL Rwy 6 HIRL Rwy 6-24 MIRL Rwy 18-36	<table border="1"> <tr> <th>CATEGORY</th> <th>A</th> <th>B</th> <th>C</th> <th>D</th> <th>E</th> </tr> <tr> <td>S-ILS 24**</td> <td colspan="5">841/24 200 (200-1/2)</td> </tr> <tr> <td>S-LOC 24</td> <td>1160/40</td> <td>519 (600-3/4)</td> <td colspan="3">1160/55 519 (600-1)</td> </tr> </table>	CATEGORY	A	B	C	D	E	S-ILS 24**	841/24 200 (200-1/2)					S-LOC 24	1160/40	519 (600-3/4)	1160/55 519 (600-1)		
CATEGORY	A	B	C	D	E														
S-ILS 24**	841/24 200 (200-1/2)																		
S-LOC 24	1160/40	519 (600-3/4)	1160/55 519 (600-1)																

ILS or LOC RWY 24