

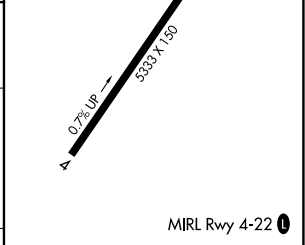
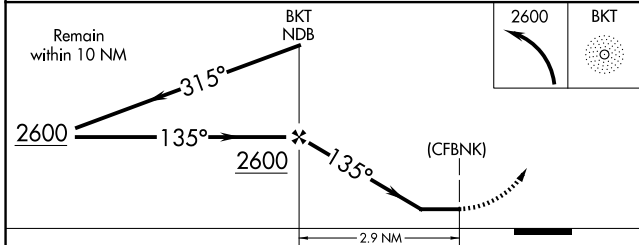
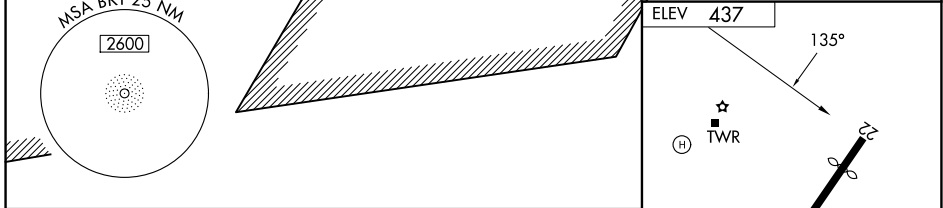
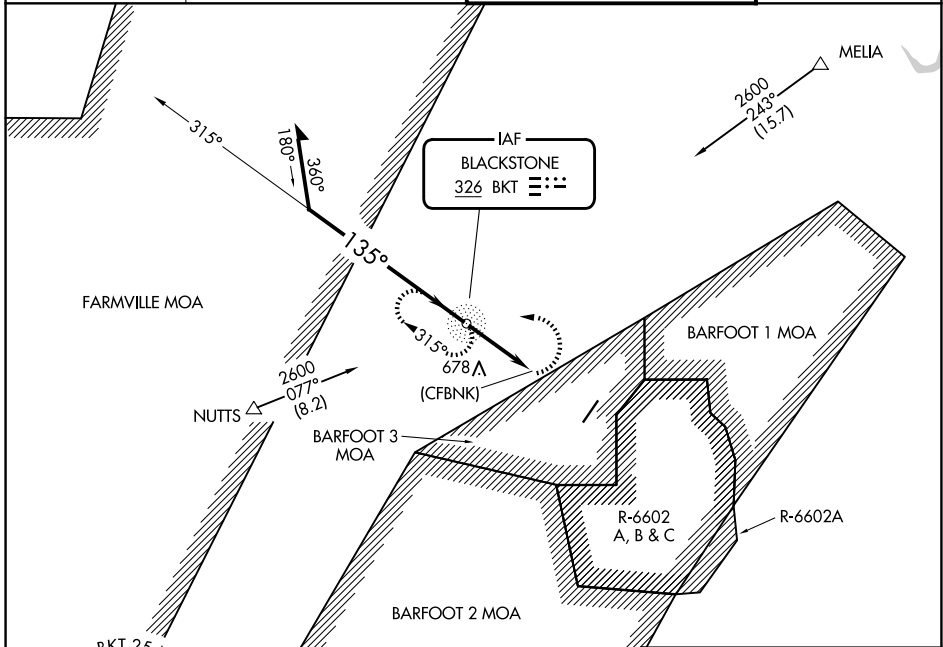
NDB BKT <b>326</b>	APP CRS <b>135°</b>	Rwy Ldg TDZE Apt Elev	<b>N/A</b> <b>N/A</b> <b>437</b>
-----------------------	------------------------	--------------------------	--

# NDB-A

ALLAN C PERKINSON/BLACKSTONE AAF (BKT)

Circling NA east of Rwy 4-22.		MISSED APPROACH: Climbing left turn to 2600 direct BKT NDB and hold, continue climb-in-hold to 2600.	
-------------------------------	--	--	--

ATIS <b>119.225</b>	WASHINGTON CENTER <b>118.75 377.1</b>	BLACKSTONE TOWER★ <b>134.7 (CTAF) 292.7</b>	GND CON <b>127.625</b>
------------------------	--	--	---------------------------



CATEGORY	A	B	C	D	FAF to MAP 2.9 NM					
CIRCLING	980-3	543 (600-3)	1000-3 563 (600-3)	NA	Knots	60	90	120	150	180
					Min:Sec	2:54	1:56	1:27	1:10	0:58

# NDB-A

NE-3, 14 MAY 2026 to 11 JUN 2026

NE-3, 14 MAY 2026 to 11 JUN 2026