

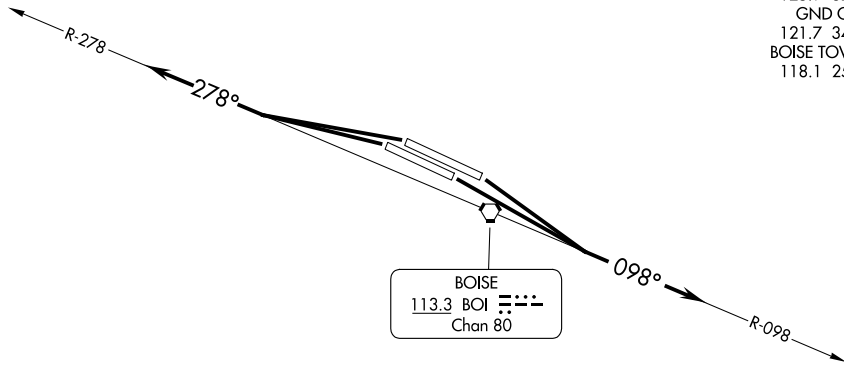
BOISE THREE DEPARTURE

AL-57 (FAA)

BOISE AIR TRML/GOWEN FLD (BOI)
BOISE, IDAHO

**TOP ALTITUDE:
16000**

BIG SKY DEP CON
 126.9 351.85 (279°-097°)
 119.6 269.4 (098°-278°)
 D-ATIS
 123.9 290.4
 CLNC DEL
 125.9 323.2
 GND CON
 121.7 348.6
 BOISE TOWER
 118.1 257.8



NW-1, 14 MAY 2026 to 11 JUN 2026

NW-1, 14 MAY 2026 to 11 JUN 2026

NOTE: RADAR required.

TAKEOFF MINIMUMS

Rwys 28L/R: Standard.

Rwys 10L/R: Standard with minimum climb of 240' per NM to 5700.

NOTE: Chart not to scale.



DEPARTURE ROUTE DESCRIPTION

TAKEOFF RUNWAY 10L/R: Climb to 16000 or lower assigned altitude on BOI VORTAC R-098, thence. . . .

TAKEOFF RUNWAY 28L/R: Climb to 16000 or lower assigned altitude on BOI VORTAC R-278, thence. . . .

. . . .Expect RADAR vectors to assigned route, expect filed altitude 10 minutes after departure.

LOST COMMUNICATIONS: If not in contact with Boise Departure Control at 10000 or assigned altitude if lower, continue climb to assigned altitude and thence on assigned route.

BOISE THREE DEPARTURE