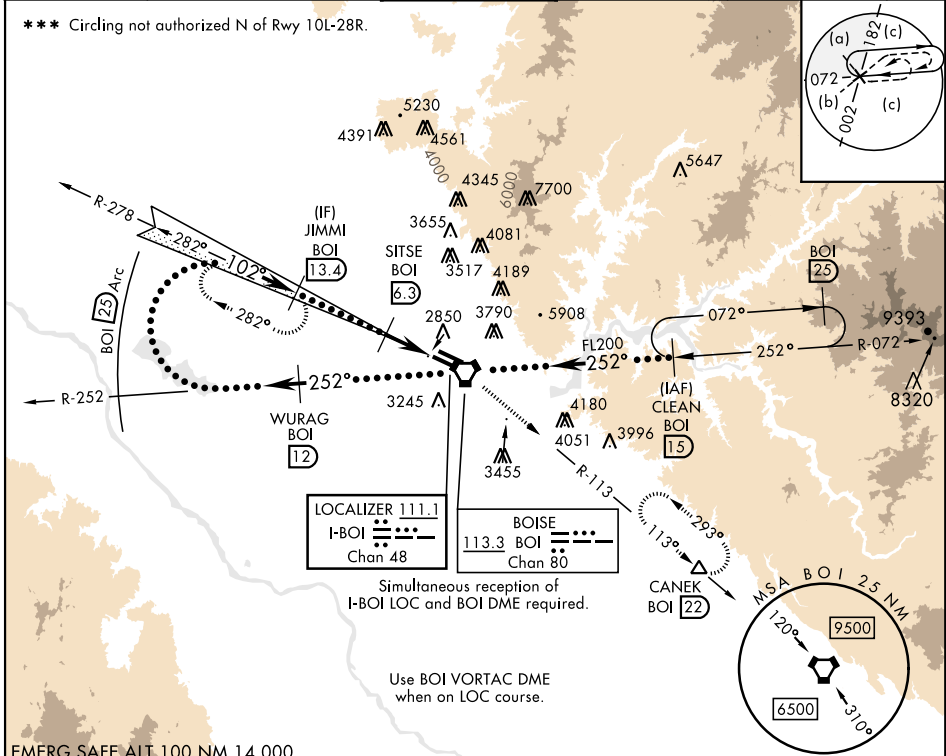


HI-ILS Z or LOC Z RWY 10R

LOC I-BOI 111.1	APCH CRS 102°	Rwy Ldg TDZE Arprt Elev 9762 2836 2872	[USAF]	BOISE AIR TERMINAL (GOWEN FLD)	(KBOI)
DME required			ALSF-2	MISSED APPROACH: Climb to 7300 on BOI VORTAC R-113 to CANEK/BOI 22 DME and hold.	
* When ALS inop, increase RVR to 40 and vis to 3/4 mile. ** When ALS inop, increase RVR to 55 and vis to 1 mile.					

ATIS 123.9 290.4	BIG SKY APP CON 119.6 269.4	BOISE TOWER 118.1 257.8	GND CON 121.7 348.6	CLNC DEL 125.9 323.2	ASOS
----------------------------	---------------------------------------	-----------------------------------	-------------------------------	--------------------------------	------



EMERG SAFE ALT 100 NM 14,000

7300	BOI R-113	CANEK	WURAG BOI 12	VGSI and ILS glidepath not coincident (VGSI Angle 3.00/TCH 64).	CLEAN BOI 15	ELEV 2872	TDZE 2836
Right at 12,000 remain within 25 NM of BOI VORTAC	JIMMI BOI 13.4	SITSE BOI 6.3	BOI 3.4	AVVVU BOI 2.7	FL200		
GS 3.00° TCH 54	6000	4100	3.6 NM	0.3	FL200	TDZL/CL Rwy 10R-28L HIRL Rwys 10L-28R, 10R-28L REIL Rwy 10L	
CATEGORY	C	D	E				
S-ILS 10R **	3036/18	200	[200-1/2]				
S-LOC 10R **	3200/35	364	[400-3/8]				
CIRCLING ***	3640-2 1/4 768 (800-2 1/4)	3820-3 948 (1000-3)	3880-3 1008 (1100-3)				

HI-ILS Z or LOC Z RWY 10R

NW-1, 14 MAY 2026 to 11 JUN 2026

NW-1, 14 MAY 2026 to 11 JUN 2026