

BOISE, IDAHO

HI-VOR or TACAN RWY 10R

VORTAC BOI 113.3 Chan 80	APCH CRS 098°	Rwy Idg TDZE Arpt Elev 9762 2836 2872
--	-------------------------	---

[USAF]

BOISE AIR TERMINAL (GOWEN FLD) (KBOI)

DME required

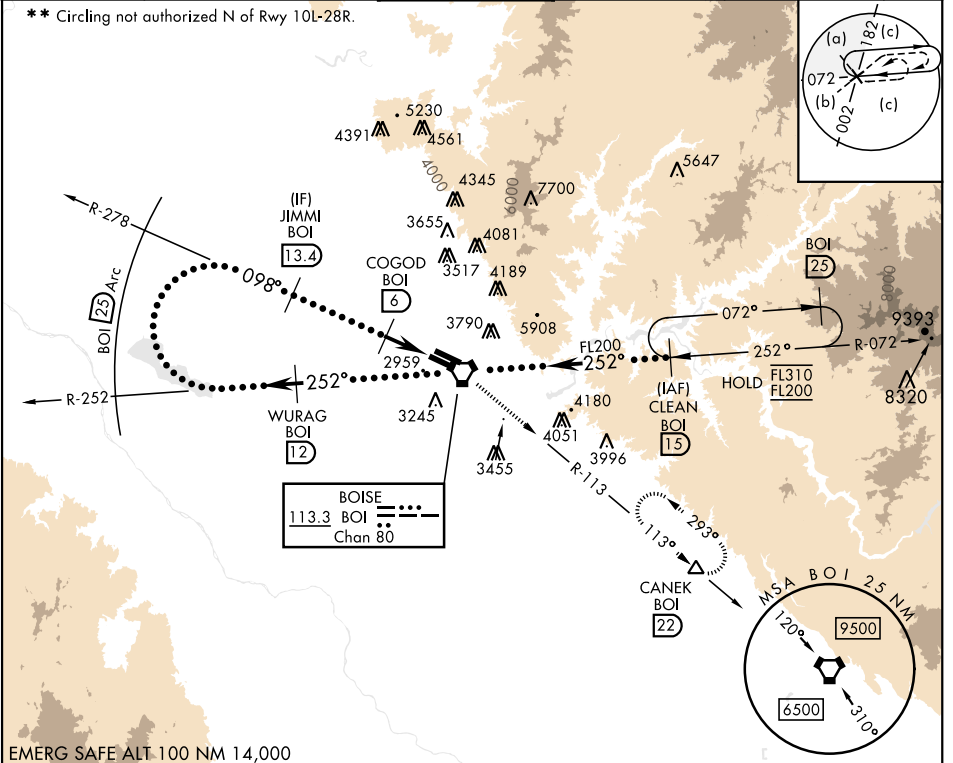
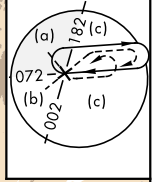
▼ * When ALS inop, increase RVR to 60 and vis to 1¼ miles.



MISSED APPROACH: Climb to 7300 on BOI VORTAC R-113 to CANEK/22 DME and hold.

ATIS 123.9 290.4	BIG SKY APP CON 119.6 269.4	BOISE TOWER 118.1 257.8	GND CON 121.7 348.6	CLNC DEL 125.9 323.2	ASOS
----------------------------	---------------------------------------	-----------------------------------	-------------------------------	--------------------------------	------

** Circling not authorized N of Rwy 10L-28R.

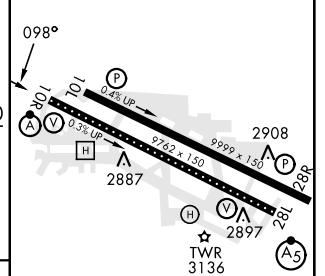
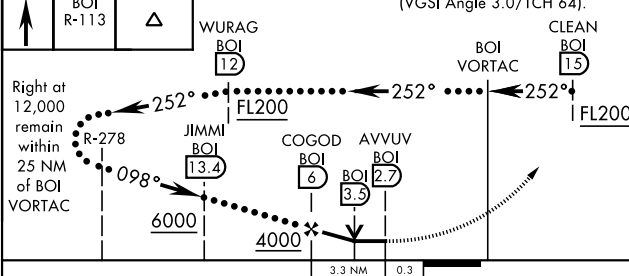


NW-1, 14 MAY 2026 to 11 JUN 2026

NW-1, 14 MAY 2026 to 11 JUN 2026

EMERG SAFE ALT 100 NM 14,000

7300	BOI R-113	CANEK	VGSI and descent angles not coincident (VGSI Angle 3.0/TCH 64).	ELEV 2872	TDZE 2836
------	-----------	-------	---	-----------	-----------



CATEGORY	C	D	E
S-10R *	3220/35 384 (400-5%)	3220/35 384 (400-5%)	3880-3
CIRCLING **	3740-2½ 768 (800-2¼)	3820-3 948 (1000-3)	3880-3 1008 (1100-3)

TDZL/CL Rwy 10R-28L
HIRL Rwys 10L-28R, 10R-28L
REIL Rwy 10L

BOISE, IDAHO

43°34'N-116°13'W

BOISE AIR TERMINAL (GOWEN FLD) (KBOI)

Amtd 2 08SEP22

HI-VOR or TACAN RWY 10R