

BOISE, IDAHO

VORTAC BOI 113.3 Chan 80	APCH CRS 278°	Rwy Idg 28L 9762 28R 2858 28R 2872	28R 9999 2872
--	-------------------------	--	--------------------------------

HI-VOR Z or TACAN Z RWY 28L

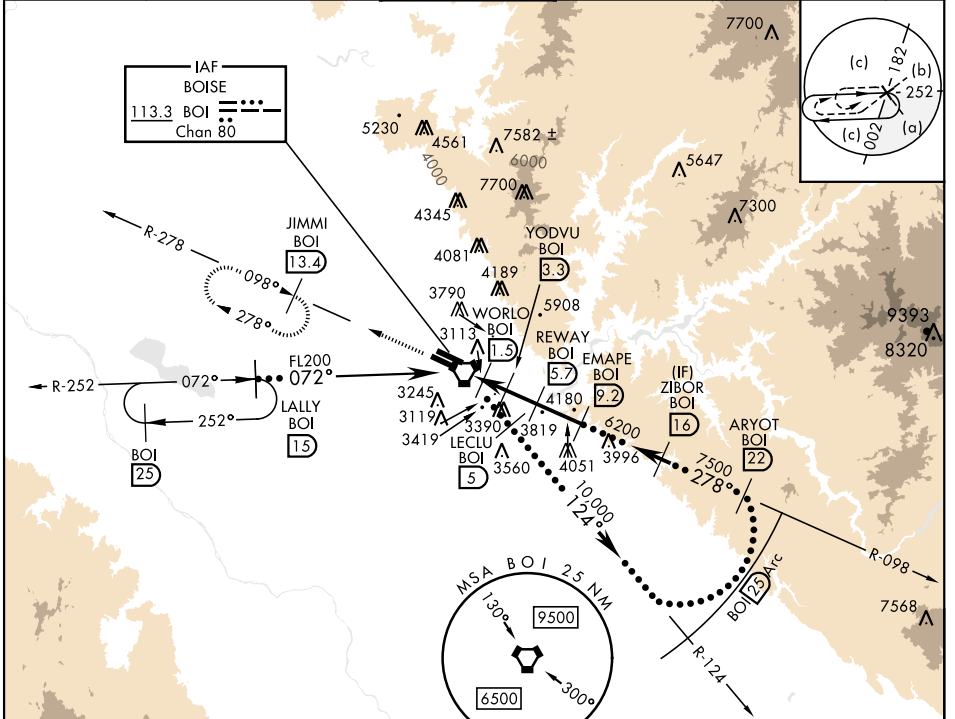
[USAF]

BOISE AIR TERMINAL (GOWEN FLD) (KBOI)

DME required	MALSR
<p>▼ * When ALS inop, increase vis to 1½ miles. ** Circling not authorized N of Rwy 10L-28R.</p>	

MISSED APPROACH: Climb to 6000 on BOI VORTAC
R-278 to JIMMI/13.4 DME and hold.

ATIS 123.9 290.4	BIG SKY APP CON 119.6 269.4	BOISE TOWER 118.1 257.8	GND CON 121.7 348.6	CLNC DEL 125.9 323.2	ASOS
----------------------------	---------------------------------------	-----------------------------------	-------------------------------	--------------------------------	------



EMERG SAFE ALT 100 NM 14,000

ELEV	2872	TDZE 28L	2858
		TDZE 28R	2872

