

LOC/DME I-BOI	APP CRS	Rwy Ldg	<b>9763</b>
<b>111.1</b>	<b>102°</b>	TDZE	<b>2836</b>
Chan <b>48</b>		Apt Elev	<b>2872</b>

# ILS Y RWY 10R (CAT II & III)

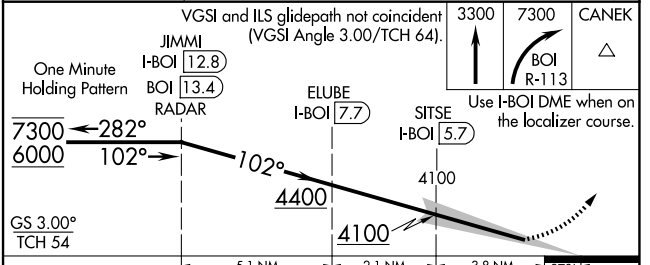
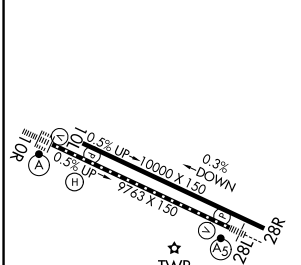
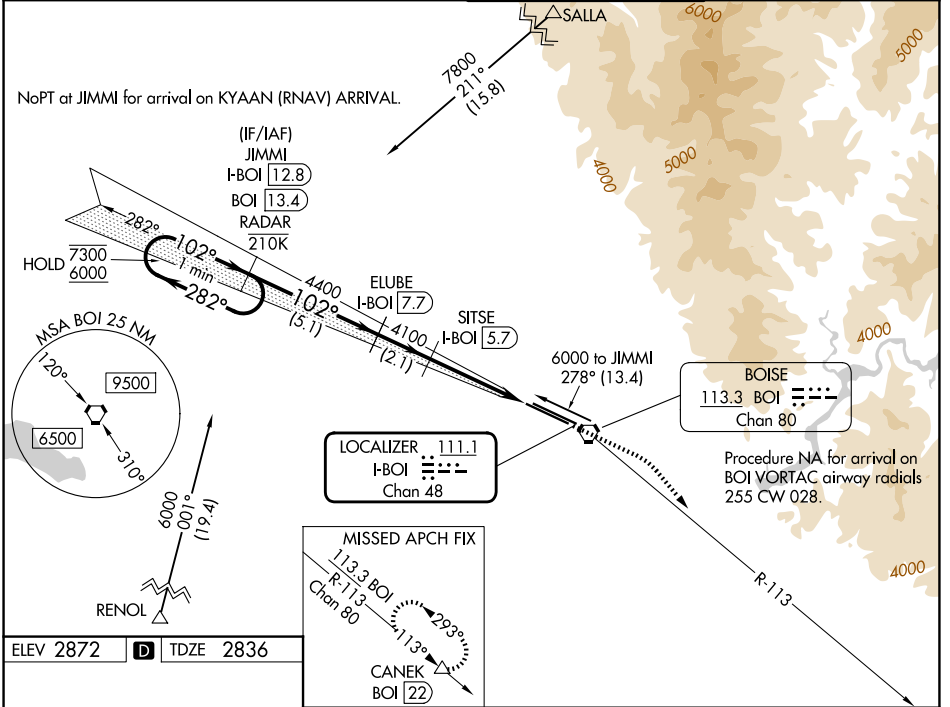
BOISE AIR TRML/GOWEN FLD (BOI)

DME required. RNAV 1 - GPS. From SALLA and RENOL.

ALSF-2

MISSED APPROACH: Climb to 3300 then climbing right turn to 7300 on BOI VORTAC R-113 to CANEK/BOI VORTAC 22 DME and hold.

D-ATIS	BIG SKY APP CON	BOISE TOWER	GND CON
<b>123.9 290.4</b>	<b>119.6 269.4</b>	<b>118.1 257.8</b>	<b>121.7 348.6</b>



CATEGORY	A	B	C	D
S-ILS 10R	CAT II RA 124/12 100 DA 2936			
S-ILS 10R	CAT III RVR 03			

**CATEGORY II & III ILS - SPECIAL AIRCREW & AIRCRAFT CERTIFICATION REQUIRED**

NW-1, 14 MAY 2026 to 11 JUN 2026

NW-1, 14 MAY 2026 to 11 JUN 2026