

LOC/DME I-BOI 111.1 Chan 48	APP CRS 102°	Rwy Ldg 9763 TDZE 2836 Apt Elev 2872
---	------------------------	--

ILS Y RWY 10R (SA CAT I)

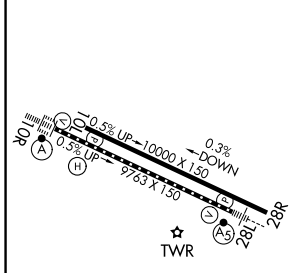
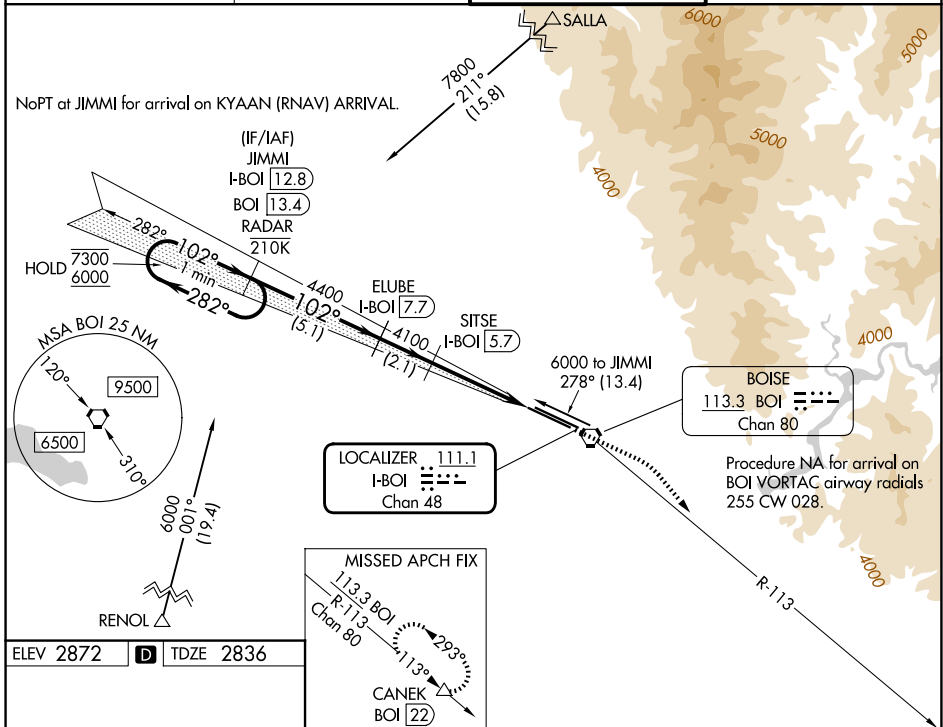
BOISE AIR TRML/GOWEN FLD (BOI)

DME required. RNAV 1 - GPS. From SALLA and RENOL.



MISSED APPROACH: Climb to 3300 then dimbing right turn to 7300 on BOI VORTAC R-113 to CANEK/BOI VORTAC 22 DME and hold.

D-ATIS 123.9 290.4	BIG SKY APP CON 119.6 269.4	BOISE TOWER 118.1 257.8	GND CON 121.7 348.6
------------------------------	---------------------------------------	-----------------------------------	-------------------------------



VGSI and ILS glidepath not coincident (VGSI Angle 3.00/TCH 64).	3300	7300	CANEK
	↑	↷	△
		BOI R-113	
		Use I-BOI DME when on the localizer course.	

CATEGORY	A	B	C	D
S-ILS 10R	RA 181/14 150 DA 2986			

SA CATEGORY I ILS - SPECIAL AIRCREW & AIRCRAFT CERTIFICATION REQUIRED

NW-1, 14 MAY 2026 to 11 JUN 2026

NW-1, 14 MAY 2026 to 11 JUN 2026