

(KYAAN.KYAAN4) 22195

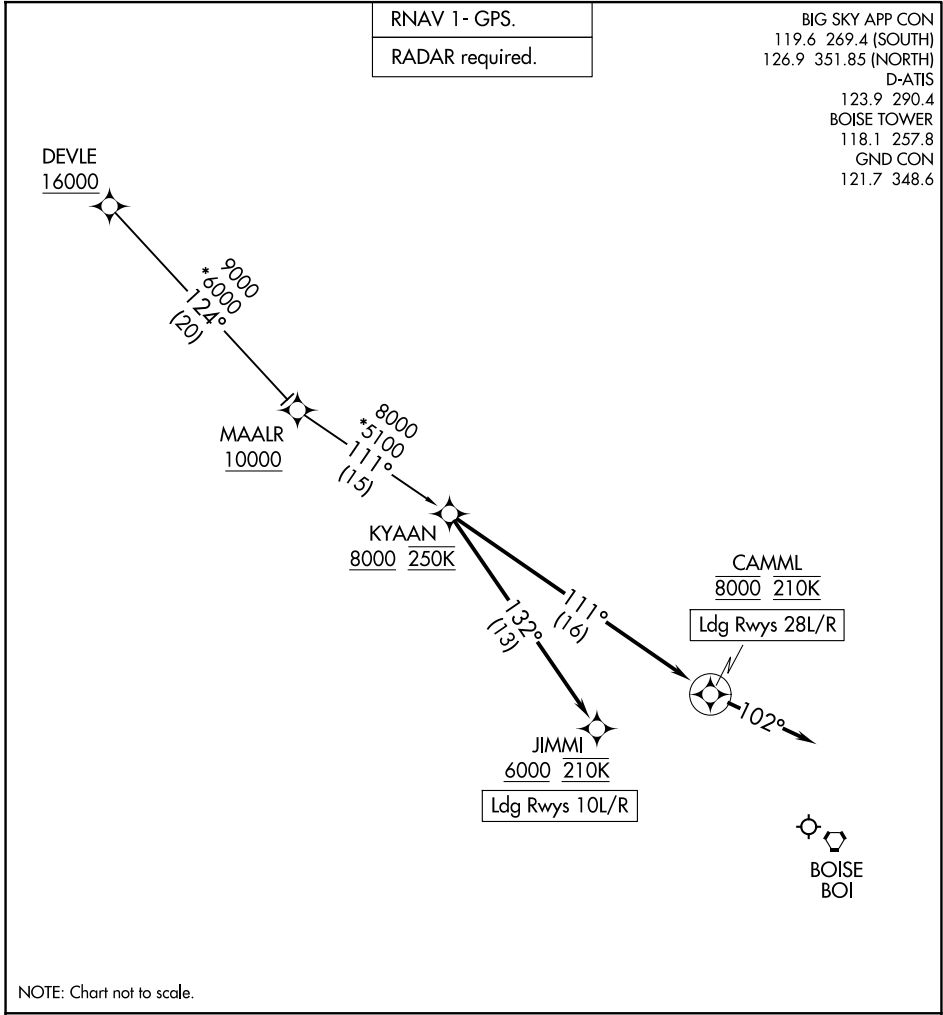
# KYAAN FOUR ARRIVAL (RNAV)

AL-57 (FAA)

BOISE AIR TRML/GOWEN FLD (BOI)  
BOISE, IDAHO

RNAV 1 - GPS.
RADAR required.

BIG SKY APP CON  
 119.6 269.4 (SOUTH)  
 126.9 351.85 (NORTH)  
 D-ATIS  
 123.9 290.4  
 BOISE TOWER  
 118.1 257.8  
 GND CON  
 121.7 348.6



NW-1, 14 MAY 2026 to 11 JUN 2026

NW-1, 14 MAY 2026 to 11 JUN 2026

NOTE: Chart not to scale.

## ARRIVAL ROUTE DESCRIPTION

### DEVLE TRANSITION (DEVLE.KYAAN4)

LANDING RUNWAYS 10L/R: From KYAAN on track 132° to cross JIMMI at or above 6000 and at 210K. Expect assigned approach or RADAR vectors to final approach course.

LANDING RUNWAYS 28L/R: From KYAAN on track 111° to cross CAMML at 8000 and at 210K, then on track 102°. Expect assigned approach or RADAR vectors to final approach course.

KYAAN FOUR ARRIVAL (RNAV)  
(KYAAN.KYAAN4) 14JUL22

BOISE, IDAHO  
BOISE AIR TRML/GOWEN FLD (BOI)