

| | | |
|-------------|----------|--------------|
| APP CRS | Rwy Ldg | 10000 |
| 102° | TDZE | 2844 |
| | Apt Elev | 2872 |

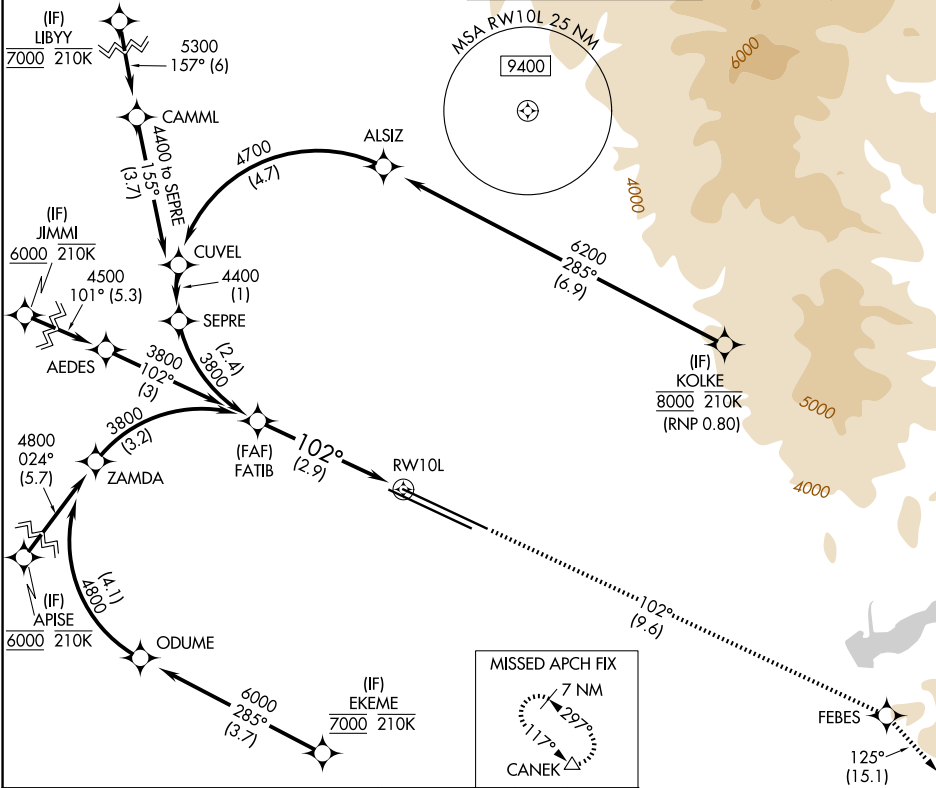
RNAV (RNP) Z RWY 10L

BOISE AIR TRML/GOWEN FLD (BOI)

RNP AR APCH - GPS.
 ▼ For uncompensated Baro-VNAV systems, procedure NA below -1.4°C or above 54°C.

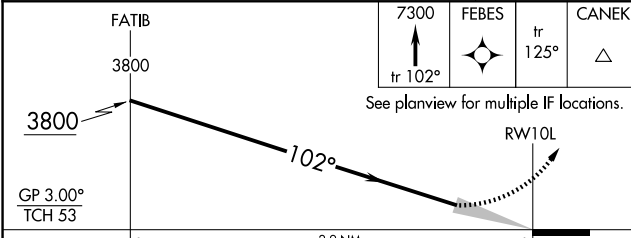
MISSED APPROACH: Climb to 7300 on track 102° to FEBES and on track 125° to CANEK and hold.

| | | | |
|--------------------|--------------------|--------------------|--------------------|
| D-ATIS | BIG SKY APP CON | BOISE TOWER | GND CON |
| 123.9 290.4 | 119.6 269.4 | 118.1 257.8 | 121.7 348.6 |



NW-1, 14 MAY 2026 to 11 JUN 2026

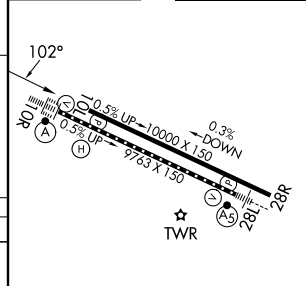
NW-1, 14 MAY 2026 to 11 JUN 2026



| | | | | |
|-------------|----------------------------|---|---|---|
| CATEGORY | A | B | C | D |
| RNP 0.30 DA | 3237-1 3/8 393 (400-1 1/8) | | | |

AUTHORIZATION REQUIRED

| | |
|-----------|-----------|
| ELEV 2872 | TDZE 2844 |
|-----------|-----------|



REIL Rwy 10L
 TDZ/CL Rwy 10R and 28L
 HIRL Rwy 10L-28R and 10R-28L