

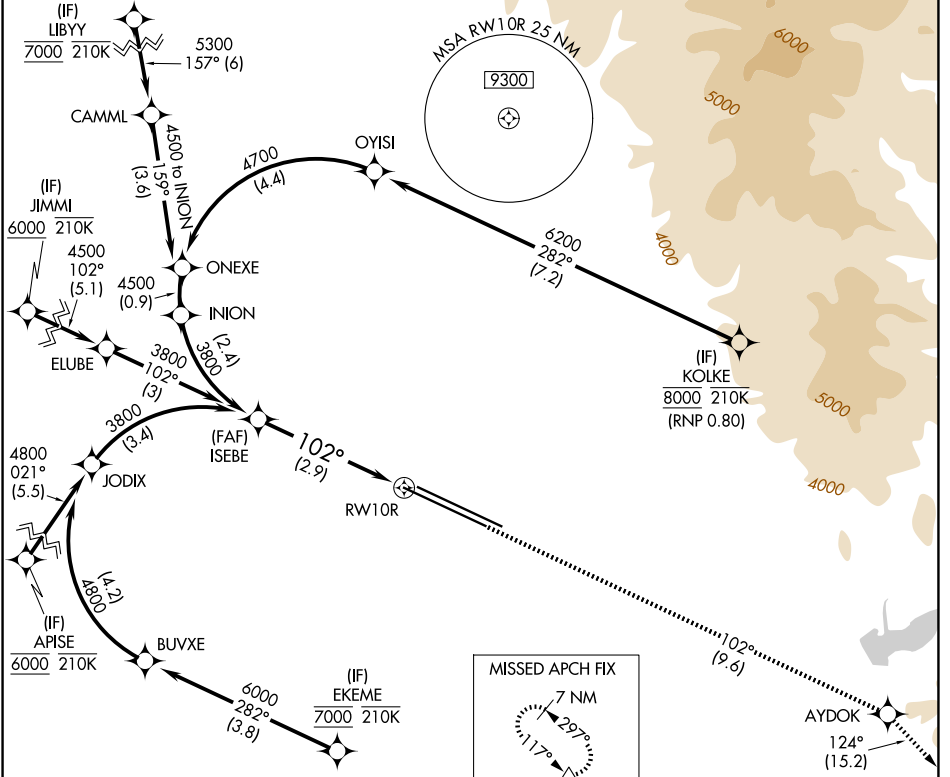
RNAV (RNP) Z RWY 10R

BOISE AIR TRML/GOWEN FLD (BOI)

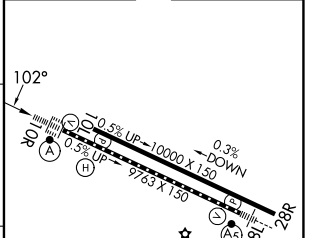
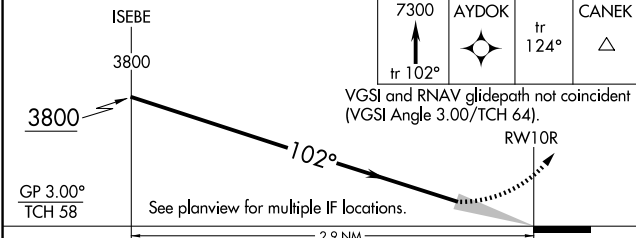
APP CRS	Rwy Ldg	9763
102°	TDZE	2836
	Apt Elev	2872

RNP AR APCH - GPS.	ALSF-2	MISSED APPROACH: Climb to 7300 on track 102° to AYDOK and on track 124° to CANEK and hold.
▼ For uncompensated Baro-VNAV systems, procedure NA below -14°C or above 54°C.		

D-ATIS 123.9 290.4	BIG SKY APP CON 119.6 269.4	BOISE TOWER 118.1 257.8	GND CON 121.7 348.6
------------------------------	---------------------------------------	-----------------------------------	-------------------------------



ELEV 2872	D TDZE 2836
-----------	--------------------



CATEGORY	A	B	C	D
RNP 0.30 DA	3219/35		383 (400-5%)	

AUTHORIZATION REQUIRED

REIL Rwy 10L
 TDZ/CL Rwy 10R and 28L
 HIRL Rwy 10L-28R and 10R-28L

NW-1, 14 MAY 2026 to 11 JUN 2026

NW-1, 14 MAY 2026 to 11 JUN 2026