

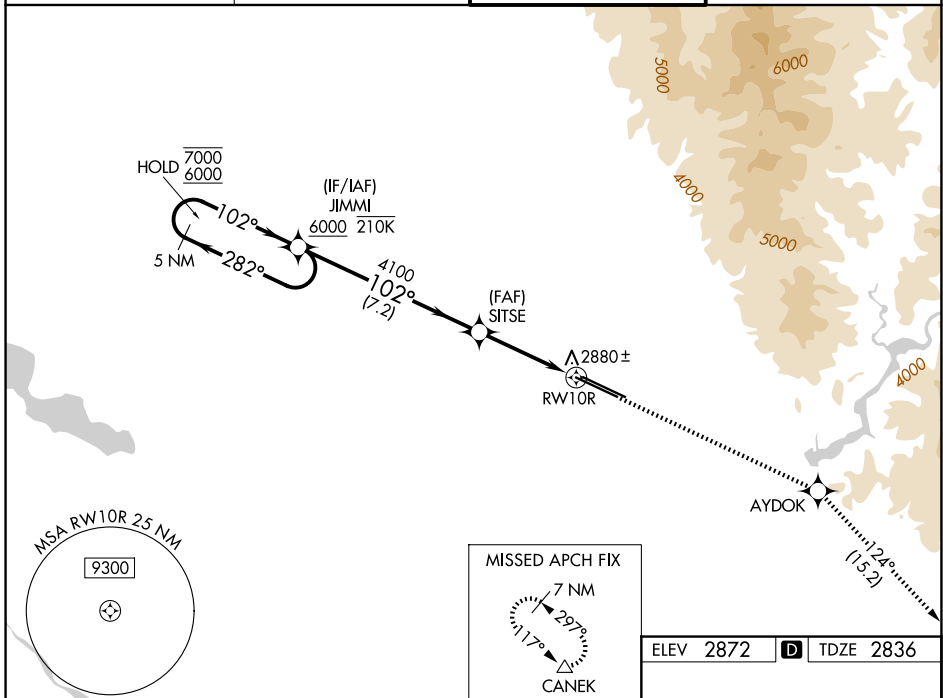
WAAS CH <b>40203</b> <b>W10B</b>	APP CRS <b>102°</b>	Rwy Ldg TDZE Apt Elev	<b>9763</b> <b>2836</b> <b>2872</b>
--	------------------------	-----------------------------	---

# RNAV (GPS) Y RWY 10R

BOISE AIR TRML/GOWEN FLD (BOI)

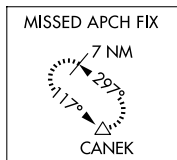
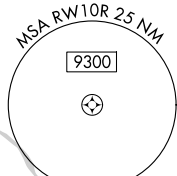
RADAR required for procedure entry. RNP APCH - GPS.		ALSIF-2 	MISSED APPROACH: Climb to 7300 direct AYDOK and on track 124° to CANEK and hold.

D-ATIS <b>123.9 290.4</b>	BIG SKY APP CON <b>119.6 269.4</b>	BOISE TOWER <b>118.1 257.8</b>	GND CON <b>121.7 348.6</b>
------------------------------	---------------------------------------	-----------------------------------	-------------------------------

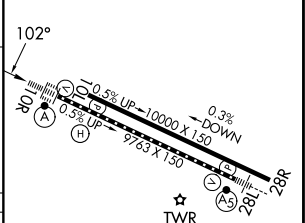
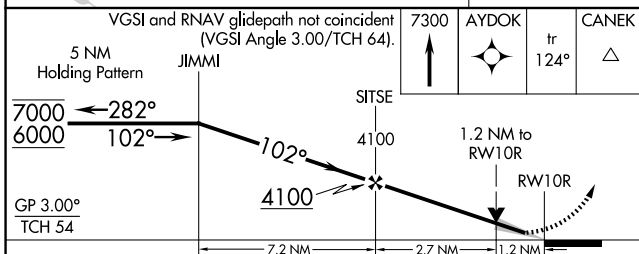


NW-1, 14 MAY 2026 to 11 JUN 2026

NW-1, 14 MAY 2026 to 11 JUN 2026



ELEV 2872		TDZE 2836
-----------	--	-----------



CATEGORY	A	B	C	D
LPV DA	3036/18		200 (200-½)	
LNAV/VNAV DA	3173/26		337 (400-½)	
LNAV MDA	3260/24	424 (400-½)	3260/40	424 (400-¾)
CIRCLING	3440-1 568 (600-1)		3640-2¼ 768 (800-2¼)	3820-3 948 (1000-3)

REIL Rwy 10L  
TDZ/CL Rwys 10R and 28L  
HIRL Rwys 10L-28R and 10R-28L