

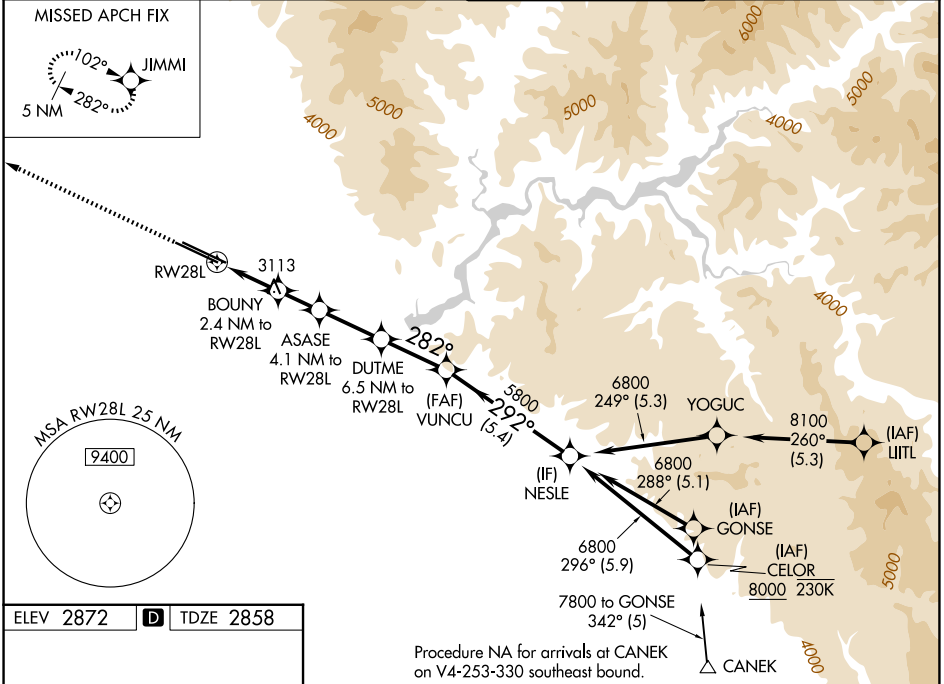
WAAS CH 7702 W28A	APP CRS 282°	Rwy Ldg TDZE Apt Elev	9763 2858 2872
---------------------------------------	------------------------	-----------------------------	---

RNAV (GPS) Y RWY 28L

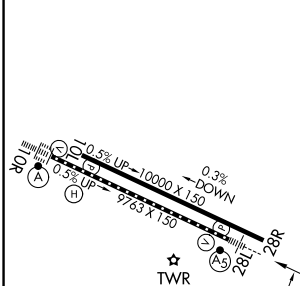
BOISE AIR TRML/GOWEN FLD (BOI)

RNP APCH - GPS.	MALSR 	MISSED APPROACH: Climb to 6000 direct JIMMI and hold, continue climb-in-hold to 6000.
Circling NA north of Rwy 10L-28R. For uncompensated Baro-VNAV systems, LNAV/VNAV NA below -14°C or above 54°C. For inop ALS, increase LPV all Cats visibility to RVR 4500, and LNAV/VNAV all Cats visibility to RVR 6000.		

D-ATIS 123.9 290.4	BIG SKY APP CON 119.6 269.4	BOISE TOWER 118.1 257.8	GND CON 121.7 348.6
------------------------------	---------------------------------------	-----------------------------------	-------------------------------



ELEV 2872	D	TDZE 2858
-----------	----------	-----------



	A	B	C	D
LPV DA		3160/24	302 (300-½)	
LNAV/VNAV DA		3267/40	409 (400-¾)	
LNAV MDA	3380/24	522 (600-½)	3380/55	522 (600-1)
CIRCLING	3440-1	568 (600-1)	3640-2¼ 768 (800-2¼)	3820-3 948 (1000-3)

REIL Rwy 10L
TDZ/CL Rws 10R and 28L
HIRL Rws 10L-28R and 10R-28L

NW-1, 14 MAY 2026 to 11 JUN 2026

NW-1, 14 MAY 2026 to 11 JUN 2026