

VORTAC BOI 113.3 Chan 80	APP CRS 101°	Rwy Ldg TDZE Apt Elev	10000 2844 2872
--	------------------------	-----------------------------	--

VOR or TACAN RWY 10L

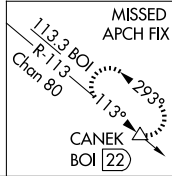
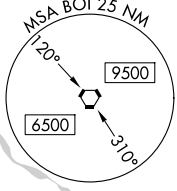
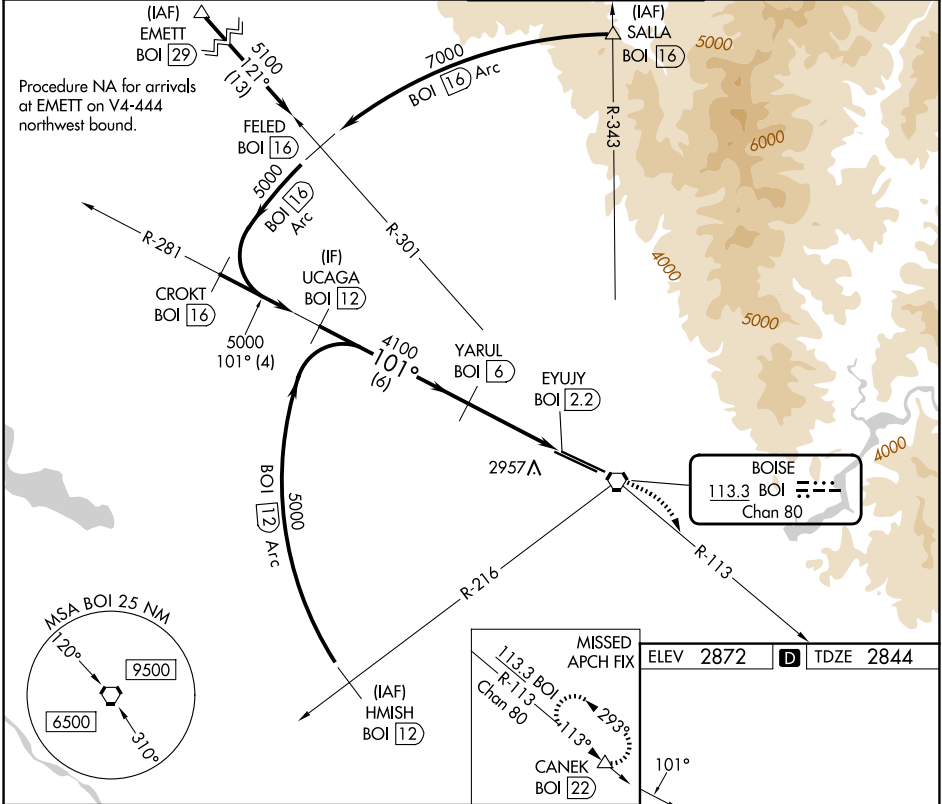
BOISE AIR TRML/GOWEN FLD (BOI)

DME required.

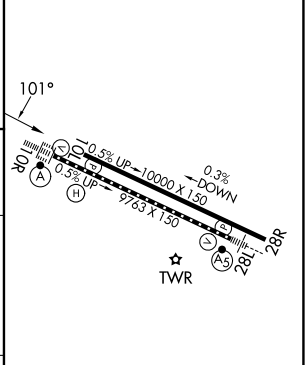
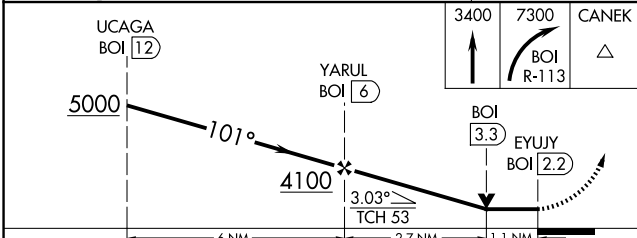
⚠ Circling NA north of Rwy 10L-28R.

MISSED APPROACH: Climb to 3400 then climbing right turn to 7300 on BOI VORTAC R-113 to CANEK/BOI VORTAC 22 DME and hold.

D-ATIS 123.9 290.4	BIG SKY APP CON 119.6 269.4	BOISE TOWER 118.1 257.8	GND CON 121.7 348.6
------------------------------	---------------------------------------	-----------------------------------	-------------------------------



ELEV 2872	D TDZE 2844
-----------	--------------------



CATEGORY	A	B	C	D	E
S-10L	3240-1	396 (400-1)	3240-1½ 396 (400-1½)		
CIRCLING	3440-1	568 (600-1)	3640-2¼ 768 (800-2¼)	3820-3 948 (1000-3)	3880-3 1008 (1100-3)

REIL Rwy 10L
TDZ/CL Rws 10R and 28L
HIRL Rws 10L-28R and 10R-28L

NW-1, 14 MAY 2026 to 11 JUN 2026

NW-1, 14 MAY 2026 to 11 JUN 2026