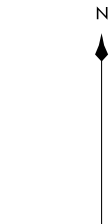


D-ATIS
135.0
BOSTON APP CON
120.6 263.1

ROBUC THREE ARRIVAL (RNAV) Transition Routes
(ROBUC.ROBUC3) 120CTT7

BOSTON, MASSACHUSETTS
GENERAL EDWARD LAWRENCE LOGAN INTL (BOS)



KENNEDY
JFK

17000
*1700
063°
(20)
NEWES

17000
*1700
063°
(32)

FEXXX
FL230

MERIT

17000
*2600
097°
(42)

17000
*2600
078°
(36)

RUIZE
FL230
FL210

17000
*2600
079°
(11)

AWLIN
17000

10 NM

(6)
14000
*1900
083°

BANKI
16000

11000
*1900
083°
(14)

ROBUC
FL190 260K
12000

See following
page for
Arrival Routes.

- NOTE: RADAR required.
- NOTE: RNAV 1.
- NOTE: DME/DME/IRU or GPS required.
- NOTE: Turbojet aircraft only.
- NOTE: RUIZE transition assigned by ATC only.

KENNEDY TRANSITION (JFK.ROBUC3)
MERIT TRANSITION (MERIT.ROBUC3)
RUIZE TRANSITION (RUIZE.ROBUC3)

(CONTINUED ON FOLLOWING PAGE)

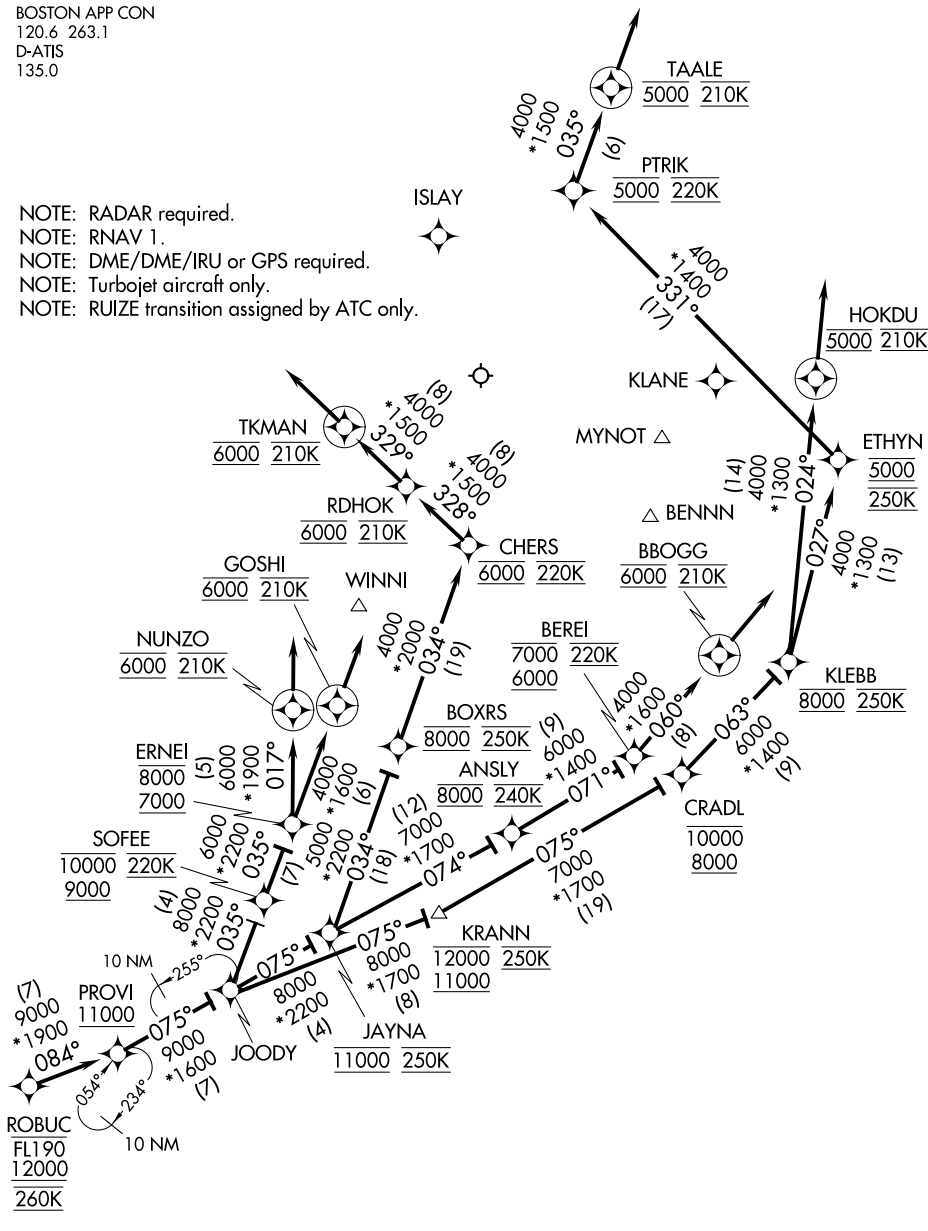
NOTE: Chart not to scale.

(ROBUC.ROBUC3) 17285
AL-58 (FAA)
GENERAL EDWARD LAWRENCE LOGAN INTL (BOS)
Transition Routes
BOSTON, MASSACHUSETTS

ROBUC THREE ARRIVAL (RNAV) Arrival Routes

BOSTON APP CON
120.6 263.1
D-ATIS
135.0

- NOTE: RADAR required.
- NOTE: RNAV 1.
- NOTE: DME/DME/IRU or GPS required.
- NOTE: Turbojet aircraft only.
- NOTE: RUIZE transition assigned by ATC only.



NE-1, 14 MAY 2026 to 11 JUN 2026

NE-1, 14 MAY 2026 to 11 JUN 2026

NOTE: Chart not to scale.

(CONTINUED ON FOLLOWING PAGE)

ROBUC THREE ARRIVAL (RNAV) Arrival Routes

ARRIVAL ROUTE DESCRIPTION

From ROBUC on track 084° to cross PROVI at or above 11000, then on track 075° to JOODY. Then on assigned runway transition.

LANDING RWY 4L: From JOODY on track 035° to cross SOFEE between 9000 and 10000 and at 220K, then on track 035° to cross ERNEI between 7000 and 8000, then on track 017° to cross NUNZO at 6000 and at 210K, then on track 017°. Expect RADAR vectors to final approach course.

LANDING RWY 4R: From JOODY on track 035° to cross SOFEE between 9000 and 10000 and at 220K, then on track 035° to cross ERNEI between 7000 and 8000, then on track 035° to cross GOSHI at 6000 and at 210K, then on track 035°. Expect RADAR vectors to final approach course.

LANDING RWY 15R: From JOODY on track 075° to cross JAYNA at 11000 and at 250K, then on track 034° to cross BOXRS at 8000 and at 250K, then on track 034° to cross CHERS at 6000 and at 220K, then on track 328° to cross RDHOK at 6000 and at 210K, then on track 329° to cross TKMAN at 6000 and at 210K, then on track 329°. Expect RADAR vectors to final approach course.

LANDING RWY 22L/R: From JOODY on track 075° to cross KRANN between 11000 and 12000 and at 250K, then on track 075° to cross CRADL between 8000 and 10000, then on track 063° to cross KLEBB at 8000 and at 250K, then on track 027° to cross ETHYN at 5000 and at 250K, then on track 331° to cross PTRIK at 5000 and at 220K, then on track 035° to cross TAALE at 5000 and at 210K, then on track 035°. Expect RADAR vectors to final approach course.

LANDING RWY 27: From JOODY on track 075° to cross KRANN between 11000 and 12000 and at 250K, then on track 075° to cross CRADL between 8000 and 10000, then on track 063° to cross KLEBB at 8000 and at 250K, then on track 024° to cross HOKDU at 5000 and at 210K, then on track 024°. Expect RADAR vectors to final approach course.

LANDING RWYS 32, 33L: From JOODY on track 075° to cross JAYNA at 11000 and at 250K, then on track 074° to cross ANSLY at 8000 and at 240K, then on track 071° to cross BEREI between 6000 and 7000 and at 220K, then on track 060° to cross BBOGG at 6000 and at 210K, then on track 060°. Expect RADAR vectors to final approach course.

NE-1, 14 MAY 2026 to 11 JUN 2026

NE-1, 14 MAY 2026 to 11 JUN 2026