

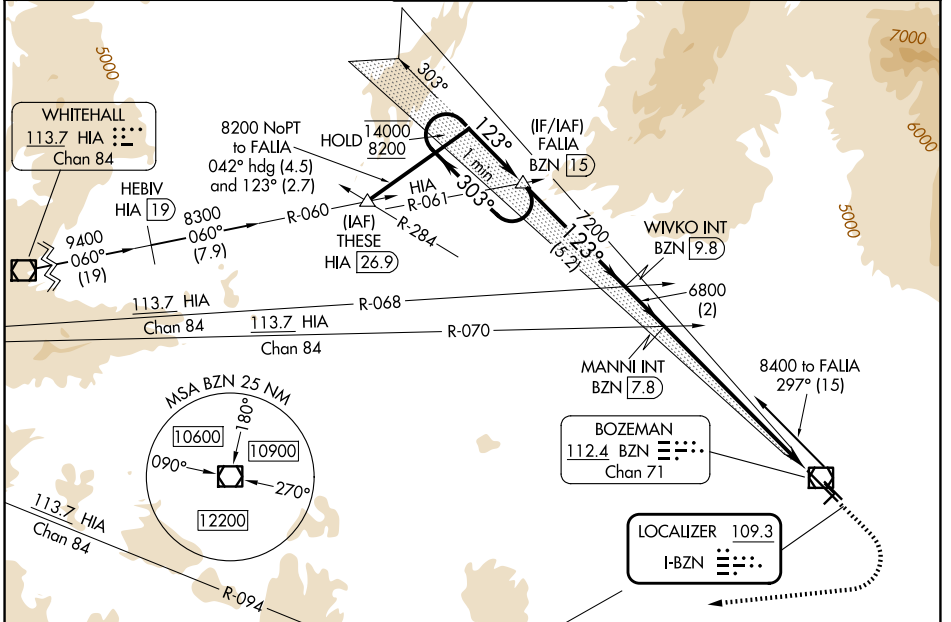
LOC I-BZN 109.3	APP CRS 123°	Rwy Ldg TDZE Apt Elev	8994 4443 4473
---------------------------	------------------------	-----------------------------	---

ILS Y or LOC Y RWY 12

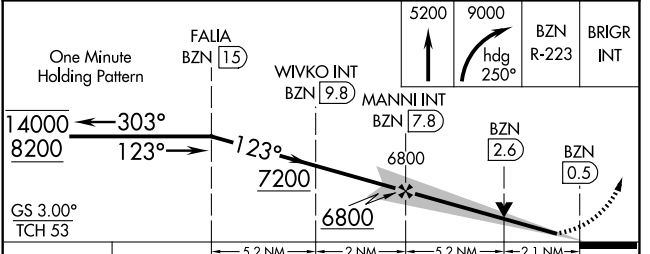
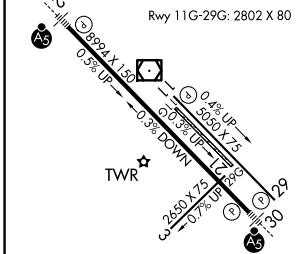
BOZEMAN YELLOWSTONE INTL (BZN)

<p>-21°C</p>	<p>Circling NA to Rwy 3-21 and 11-29. DME from BZN VOR/DME. DME use requires simultaneous reception of I-BZN and BZN DME. For inop ALS, increase S-LOC 12 Cat C/D visibility to 2 SM. *RVR 1800 authorized with use of FD or AP or HUD to DA.</p>	<p>MALS R</p>	<p>MISSED APPROACH: Climb to 5200 then climbing right turn to 9000 on heading 250° and on BZN VOR/DME R-223 to BRIGR INT/BZN VOR/DME 1.5 DME and hold, continue climb-in-hold to 9000.</p>
--------------	---	---------------	--

ATIS 135.425	BIG SKY APP CON* 118.975 226.675	BOZEMAN TOWER* 118.2 (CTAF) 0	GND CON 121.8	UNICOM 122.95
------------------------	--	---	-------------------------	-------------------------



ELEV 4473	TDZE 4443
-----------	-----------



HIRL Rwy 12-30	MIRL Rwy 11-29	FAF to MAP 7.3 NM			
Knots	60	90	120	150	180
Min:Sec	7:18	4:52	3:39	2:55	2:26
CATEGORY	A	B	C	D	
S-ILS 12*	4643/24 200 (200-½)				
S-LOC 12	5160/24	717 (700-½)	5160-1½	717 (700-1½)	
CIRCLING	5160-1	687 (700-1)	5160-2	5320-2¾ 847 (900-2¾)	

NW-1, 14 MAY 2026 to 11 JUN 2026

NW-1, 14 MAY 2026 to 11 JUN 2026