


LOC I-BZN 109.3	APP CRS 123°	Rwy Ldg TDZE Apt Elev	8994 4443 4473
---------------------------	------------------------	-----------------------------	---

ILS Z or LOC Z RWY 12

BOZEMAN YELLOWSTONE INTL (BZN)

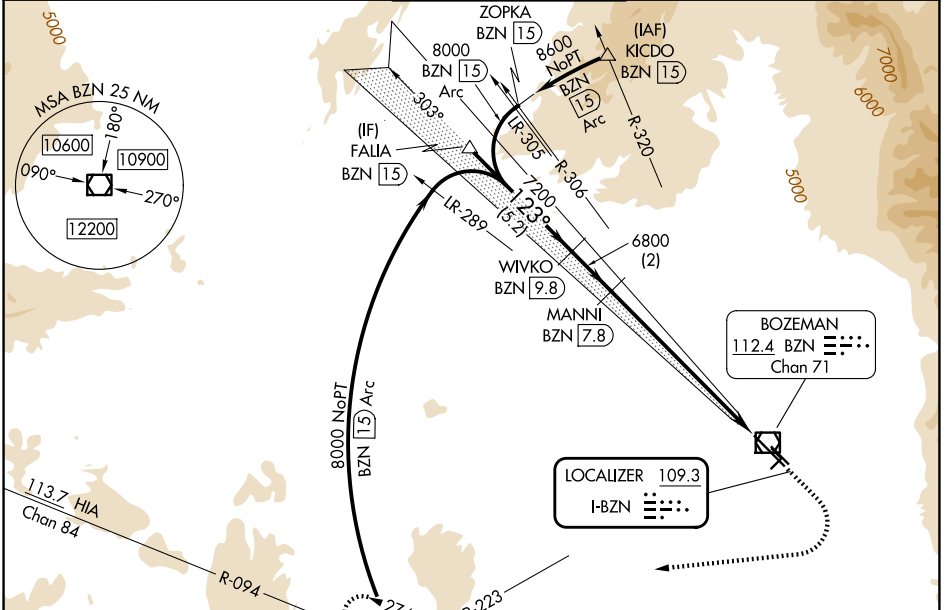
DME required. RADAR required for procedure entry at BRIGR.

⚠ Circling NA to Rwy 3-21 and 11-29. DME from BZN VOR/DME.
⚠ DME use requires simultaneous reception of I-BZN and BZN DME.
❄ -21°C For inop ALS, increase S-LOC Cat C/D visibility to 2 SM.
 *RVR 1800 authorized with use of FD or AP or HUD to DA.

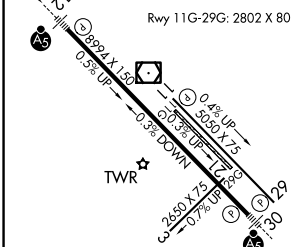
MALSR 

MISSED APPROACH: Climb to 5200 then climbing right turn to 9000 on heading 250° on BZN VOR/DME R-223 to BRIGR/BZN 15 DME and hold, continue climb-in-hold to 9000.

ATIS 135.425	BIG SKY APP CON* 118.975 226.675	BOZEMAN TOWER* 118.2 (CTAF) 0	GND CON 121.8	UNICOM 122.95
------------------------	--	---	-------------------------	-------------------------



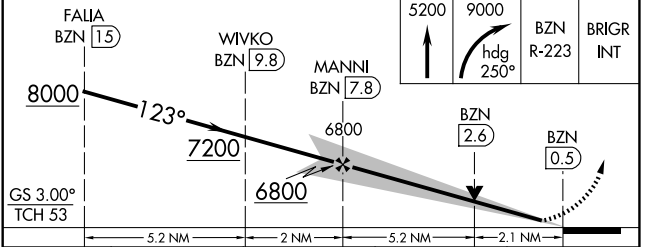
ELEV 4473	D	TDZE 4443
-----------	----------	-----------



HIRL Rwy 12-30 **0**
 MIRL Rwy 11-29 **0**

FAF to MAP 7.3 NM

Knots	60	90	120	150	180
Min:Sec	7:18	4:52	3:39	2:55	2:26



CATEGORY	A	B	C	D
S-ILS 12*	4643/24 200 (200-½)			
S-LOC 12	5160/24	717 (700-½)	5160-1½	717 (700-1%)
CIRCLING	5160-1	687 (700-1)	5160-2 687 (700-2)	5360-2¾ 887 (900-2¾)

NW-1, 14 MAY 2026 to 11 JUN 2026

NW-1, 14 MAY 2026 to 11 JUN 2026